

990 Cindy Ln
CARPINTERIA, CA

RATE REDUCED!



For Sublease | Efficient Office Suite Near The Bluffs | 2,143 SF

Experience. Integrity. Trust.
Since 1993

Caitlin Hensel
805.898.4374
caitlin@hayescommercial.com
lic. 01893341

Dan Moll
805.898.4380
dan@hayescommercial.com
lic. 00885073



PROPERTY SUMMARY

This first floor office space features a functional layout, plenty of parking, and close proximity to the freeway. Located near the bluffs of Carpinteria, central to some of the area's high-tech and industrial companies.

Note: Long-term direct lease possible — CLA for details.

Suite: B
Size: 2,143 SF
Rate: \$2.05 MGR
Available: 30 days notice
Term: Through 9/30/23
Furniture: Potentially available

Floor: First
HVAC: Yes
Restrooms: Men's and women's
Parking: 8+ spaces
Utilities: Separately metered
Zoning: M-RP

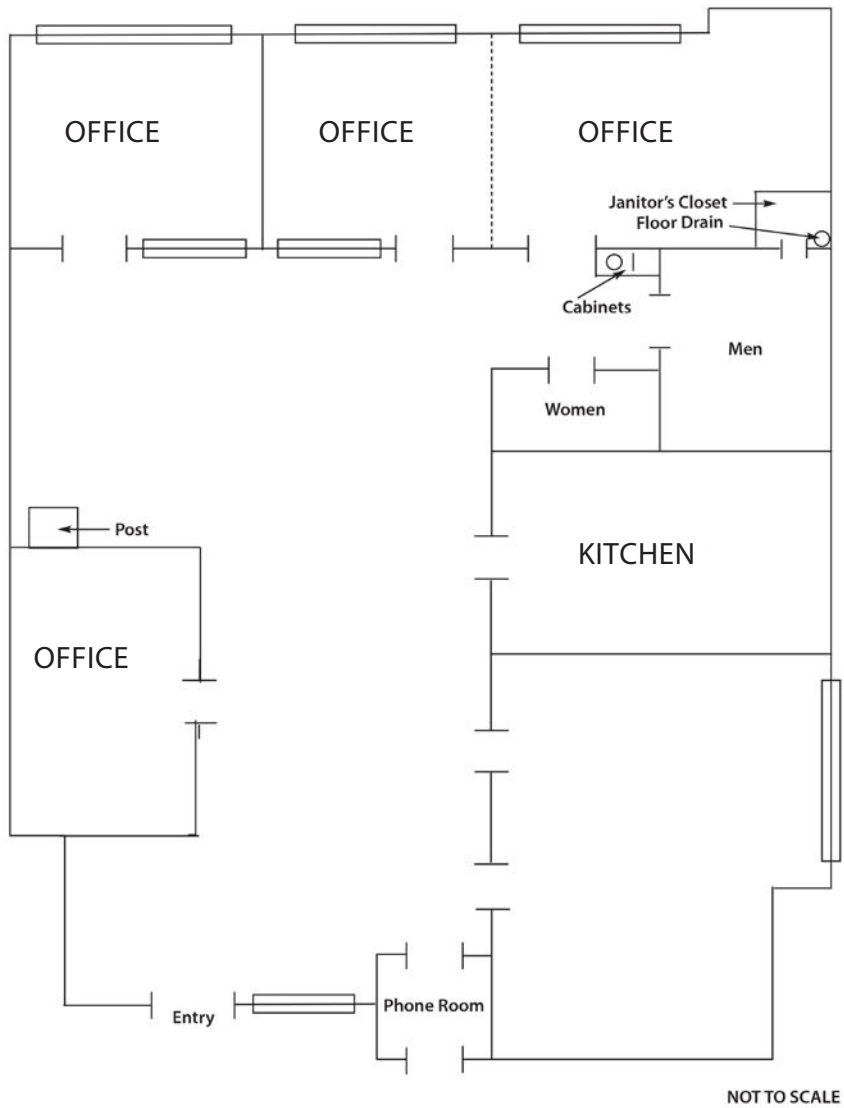


*Experience. Integrity. Trust.
Since 1993*

Caitlin Hensel
805.898.4374
caitlin@hayescommercial.com
lic. 01893341

Dan Moll
805.898.4380
dan@hayescommercial.com
lic. 00885073





Experience. Integrity. Trust.
Since 1993

Caitlin Hensel
805.898.4374
caitlin@hayescommercial.com
lic. 01893341

Dan Moll
805.898.4380
dan@hayescommercial.com
lic. 00885073

 **Hayes**
COMMERCIAL GROUP

AREA OVERVIEW

Linden Ave
(Downtown Carpinteria)

Carpinteria Nature Preserve

Viola Fields

S&S Seeds

Planned Member Services

PROCORE

Continental Auto

Rincon Engineering

Permanent open space

Montecito	10 mi
Santa Barbara	13 mi
Goleta	22 mi

US
101

Linked in

SITE

Rincon Surf	2 mi
Ventura	15 mi
Oxnard	25 mi
Santa Clarita	66 mi
Los Angeles	83 mi

The Bluffs

About five minutes from downtown Carpinteria lies a stretch of beautiful coastal bluffs hugging the shore. Located just across US 101 is a collection of office/R&D/industrial buildings occupied by strong tenants like Procore and LinkedIn.



With easy US 101 access, temperate climate, and proximity to the beach and downtown, this coastal enclave is in high demand.

The subject property is situated in this park, and a new tenant will inherit the many amenities of the area.



Experience. Integrity. Trust.
Since 1993

Caitlin Hensel
805.898.4374
caitlin@hayescommercial.com
lic. 01893341

Dan Moll
805.898.4380
dan@hayescommercial.com
lic. 00885073

 **Hayes**
COMMERCIAL GROUP