

# 801 LINDEN AVE, CARPINTERIA

FOR **SALE** OR **LEASE** | **7,300 SF**

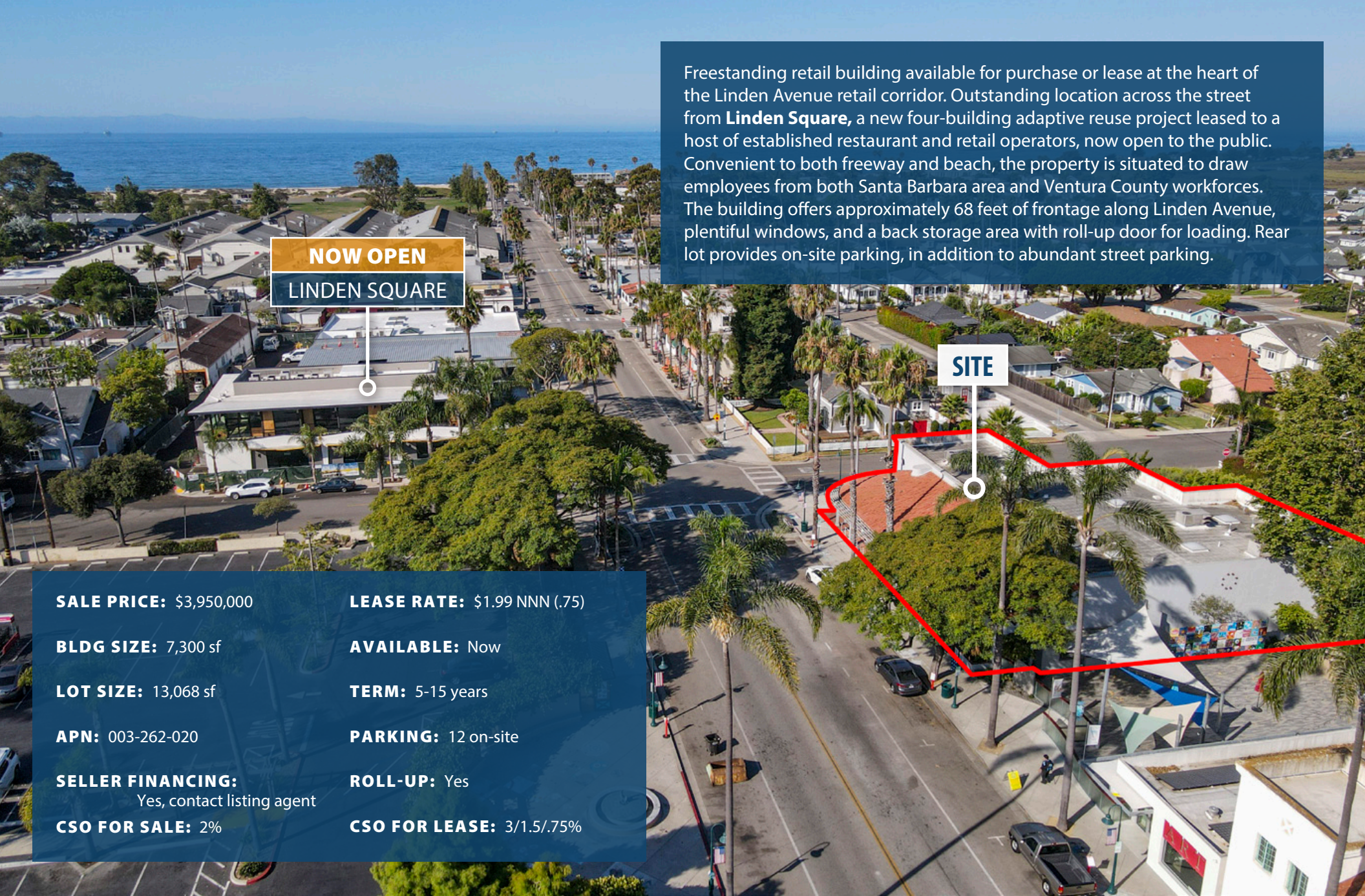
Freestanding Retail Building on Prominent Corner  
Across from Newly Completed Linden Square Project

**Hayes**  
COMMERCIAL GROUP

Francois DeJohn  
**805.898.4365**  
fran@hayescommercial.com

**PRICED TO SELL**  
SELLER FINANCING AVAILABLE





Freestanding retail building available for purchase or lease at the heart of the Linden Avenue retail corridor. Outstanding location across the street from **Linden Square**, a new four-building adaptive reuse project leased to a host of established restaurant and retail operators, now open to the public. Convenient to both freeway and beach, the property is situated to draw employees from both Santa Barbara area and Ventura County workforces. The building offers approximately 68 feet of frontage along Linden Avenue, plentiful windows, and a back storage area with roll-up door for loading. Rear lot provides on-site parking, in addition to abundant street parking.

**NOW OPEN**  
**LINDEN SQUARE**

**SITE**

**SALE PRICE:** \$3,950,000

**LEASE RATE:** \$1.99 NNN (.75)

**BLDG SIZE:** 7,300 sf

**AVAILABLE:** Now

**LOT SIZE:** 13,068 sf

**TERM:** 5-15 years

**APN:** 003-262-020

**PARKING:** 12 on-site

**SELLER FINANCING:**  
Yes, contact listing agent

**ROLL-UP:** Yes

**CSO FOR SALE:** 2%

**CSO FOR LEASE:** 3/1.5/.75%

*Experience. Integrity. Trust.*  
*Since 1993*

**Francois DeJohn**  
**805.898.4365**  
[fran@hayescommercial.com](mailto:fran@hayescommercial.com)  
lic. 01144570

 **Hayes**  
COMMERCIAL GROUP





*Experience. Integrity. Trust.*  
Since 1993

**Francois DeJohn**  
805.898.4365  
[fran@hayescommercial.com](mailto:fran@hayescommercial.com)  
lic. 01144570







## ZONING

### Permitted Uses

Regarding permitted uses, the property is zoned Central Business (CB) and is subject to the Visitor serving (V) overlay district. Permissible uses in the CB zone district and V overlay district include restaurants, service and retail commercial uses normally associated with the needs of visitors and which may also serve local residents (CMC §14.44.050).



*Click or scan for more information*



### Chain Businesses

Permitted uses would also be subject to the City's Formula Business regulations (CMC §14.53) which would not allow a "chain" type business (a business that has more than seven locations anywhere in the nation). Grocery stores, banks, pharmacies and some other types of business are exempt.



*Click or scan for more information*

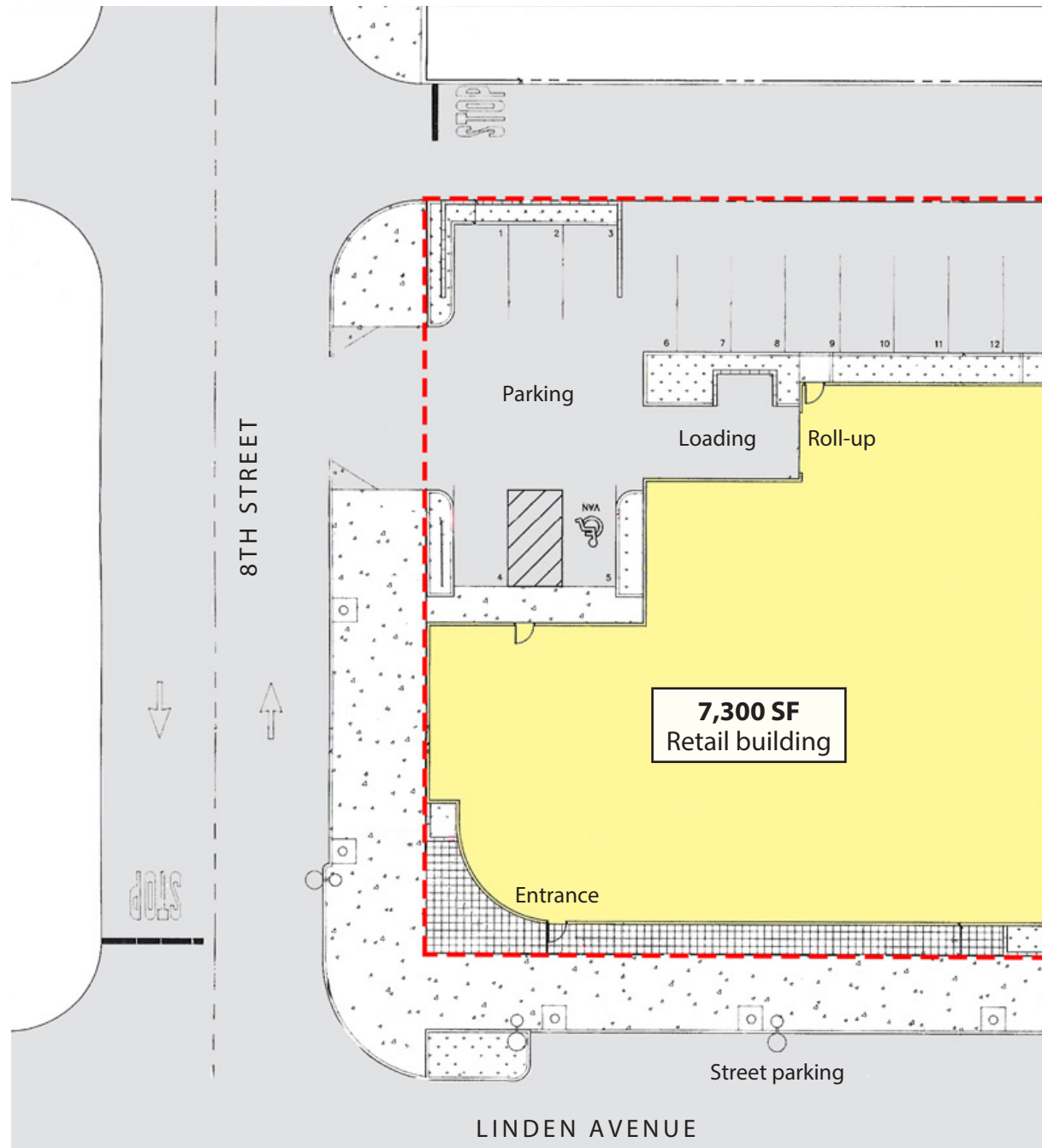


*Experience. Integrity. Trust.  
Since 1993*

**Francois DeJohn**  
805.898.4365  
[fran@hayescommercial.com](mailto:fran@hayescommercial.com)  
lic. 01144570



## SITE PLAN



*Experience. Integrity. Trust.*  
Since 1993

**Francois DeJohn**  
805.898.4365  
[fran@hayescommercial.com](mailto:fran@hayescommercial.com)  
lic. 01144570





1. City Market
2. Esau's Cafe
3. Siam Elephant Thai
4. Tidepools
5. Serigraph Resort Wear
6. Pizza Man Dan's
7. Giannfranco's Trattoria
8. Little Dom's Seafood
9. Laughing Buddha Thrift
10. Tacos Don Roke
11. Rori's Ice Cream
12. Smart & Final Extra
13. Carpinteria Cotton Co
14. Carpinteria Arts Center
15. Carpinteria Beach Co.
16. Reynaldo's Bakery
17. Guicho's Eatery
18. Nutbelly
19. Seastrand
20. The Worker Bee Cafe
21. Sushi Teri
22. Murphy's Vinyl Shack
23. Carp Moon Cafe
24. Brew & Cue
25. Rincon Brewery



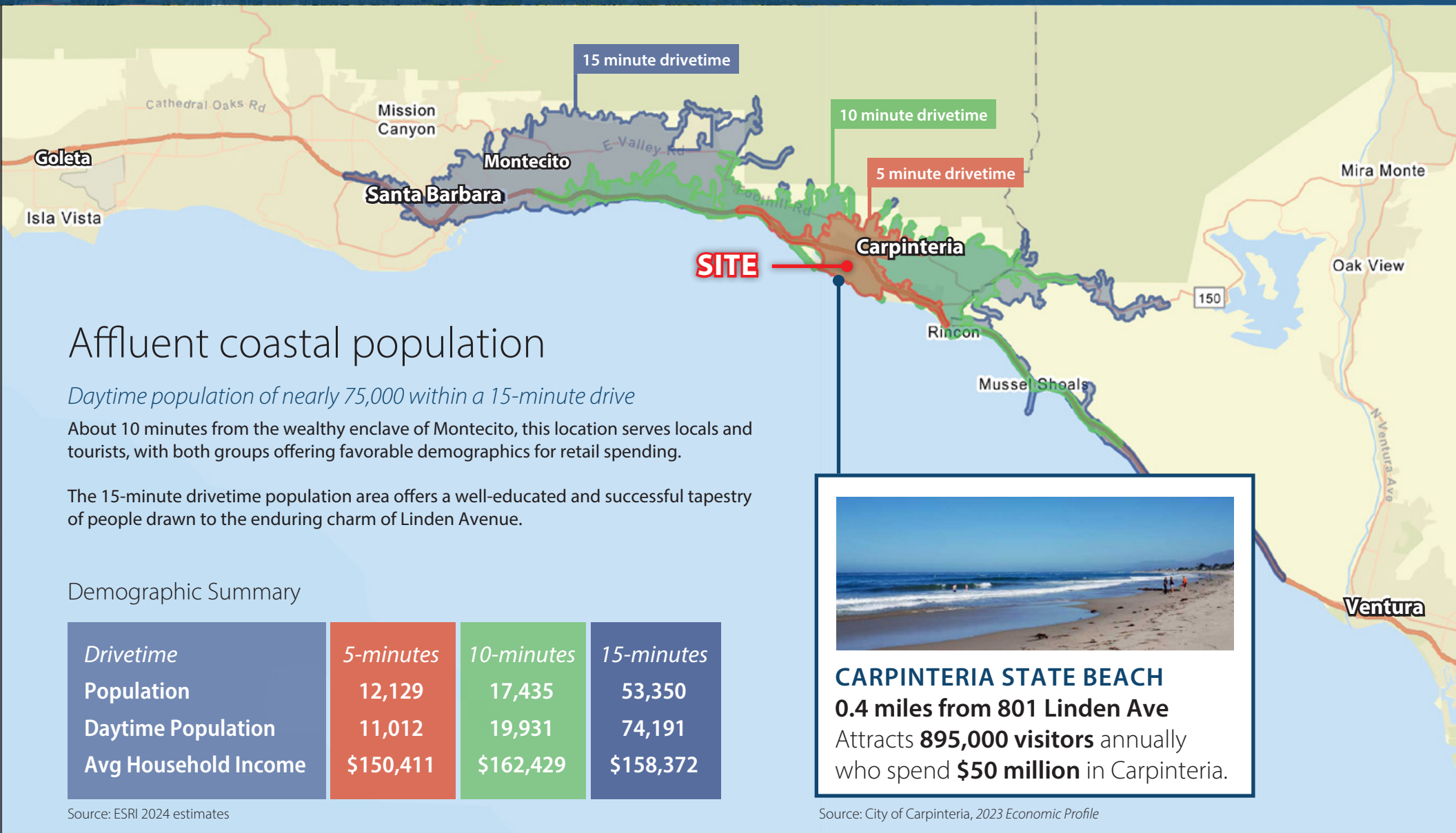
*Experience. Integrity. Trust.*  
Since 1993

**Francois DeJohn**  
805.898.4365  
[fran@hayescommercial.com](mailto:fran@hayescommercial.com)  
lic. 01144570





# DEMOGRAPHICS



*Experience. Integrity. Trust.*  
 Since 1993

**Francois DeJohn**  
 805.898.4365  
[fran@hayescommercial.com](mailto:fran@hayescommercial.com)  
 lic. 01144570





# Carpinteria

## *World-famous beach with a side of tech*

Carpinteria is a charming oceanside city conveniently located a few miles down US 101 from Montecito and Santa Barbara. The city is known for its beautiful beaches, agriculture, and the retail corridor along Linden Avenue. In recent years, many tech companies have made Carpinteria home. Among them are Procore, LinkedIn/Microsoft, Continental Auto Research, and NuSil. Carpinteria offers an attractive set of amenities that appeals to young tech workers, families, and seniors who seek an active community and outdoor lifestyle.

## *Sharing the coastline: The Santa Barbara area*

The South Coast of Santa Barbara County is a continuous metro area encompassing Goleta, Santa Barbara, Montecito, Summerland, and Carpinteria. The area has been dubbed "Techtopia" for its burgeoning technology and engineering sector. Alternately, the area has been nicknamed the American Riviera due to its Mediterranean climate and beauty. Santa Barbara is 90 miles north of Los Angeles and is served by the Santa Barbara Airport and Amtrak. Tucked between the Santa Ynez Mountains and the Pacific Ocean, Santa Barbara promotes an outdoor lifestyle, averaging 300 sunny days a year.

13,104  
residents

\$149,325  
Avg. household income

65,800  
cars per day

Exurbanites  
dominant tapestry segment

Exurbanites are generous philanthropists, especially to the arts, with the high income to back it up. College-educated and comfortable, they prefer affluent and urbane areas.

*Experience. Integrity. Trust.*  
*Since 1993*

**Francois DeJohn**  
**805.898.4365**  
[fran@hayescommercial.com](mailto:fran@hayescommercial.com)  
lic. 01144570





# Linden Square - *adaptive development across the street*

The 19,000 SF ground floor of this adaptive re-use project is fully leased and newly open to the public.

Triple-net rents reportedly range from \$4.00 to \$6.00 PSF, making the asking rent at 801 Linden Ave especially appealing.



View of Linden Square from 801 Linden Ave.  
The project has recently reached completion, and businesses are now open to the public.

*Experience. Integrity. Trust.*  
Since 1993

**Francois DeJohn**  
805.898.4365  
[fran@hayescommercial.com](mailto:fran@hayescommercial.com)  
lic. 01144570

**Hayes**  
COMMERCIAL GROUP