

715 State St

SANTA BARBARA, CA



INCENTIVE RATE
\$1.50 MGR for first 6 months
Call listing agent for details

For Lease | **Downtown Second-Floor Office** | **2,912 SF**

Experience. Integrity. Trust.
Since 1993

Kristopher Roth
805.898.4361
kris@hayescommercial.com
lic. 01482732

Caitlin Hensel
805.898.4374
caitlin@hayescommercial.com
lic. 01893341



OFFERING SUMMARY

Prominent second-floor office available in the heart of downtown Santa Barbara. The suite features a good mix of open workspace and private offices, high ceilings, kitchenette and easy access to the many amenities of State Street.

Size:	2,912 SF	Floor:	Second
Rate:	\$1.50 MGR for first six months; \$2.25 MGR thereafter; CLA	Elevator:	None
Utilities:	Tenant pays its pro-rata share	Parking:	Nearby city lots, and downtown private lots with leasable monthly spaces
Term:	2-5 years	HVAC:	Throughout
Available:	Now	To Show:	Call listing agents
Restroom:	Private		



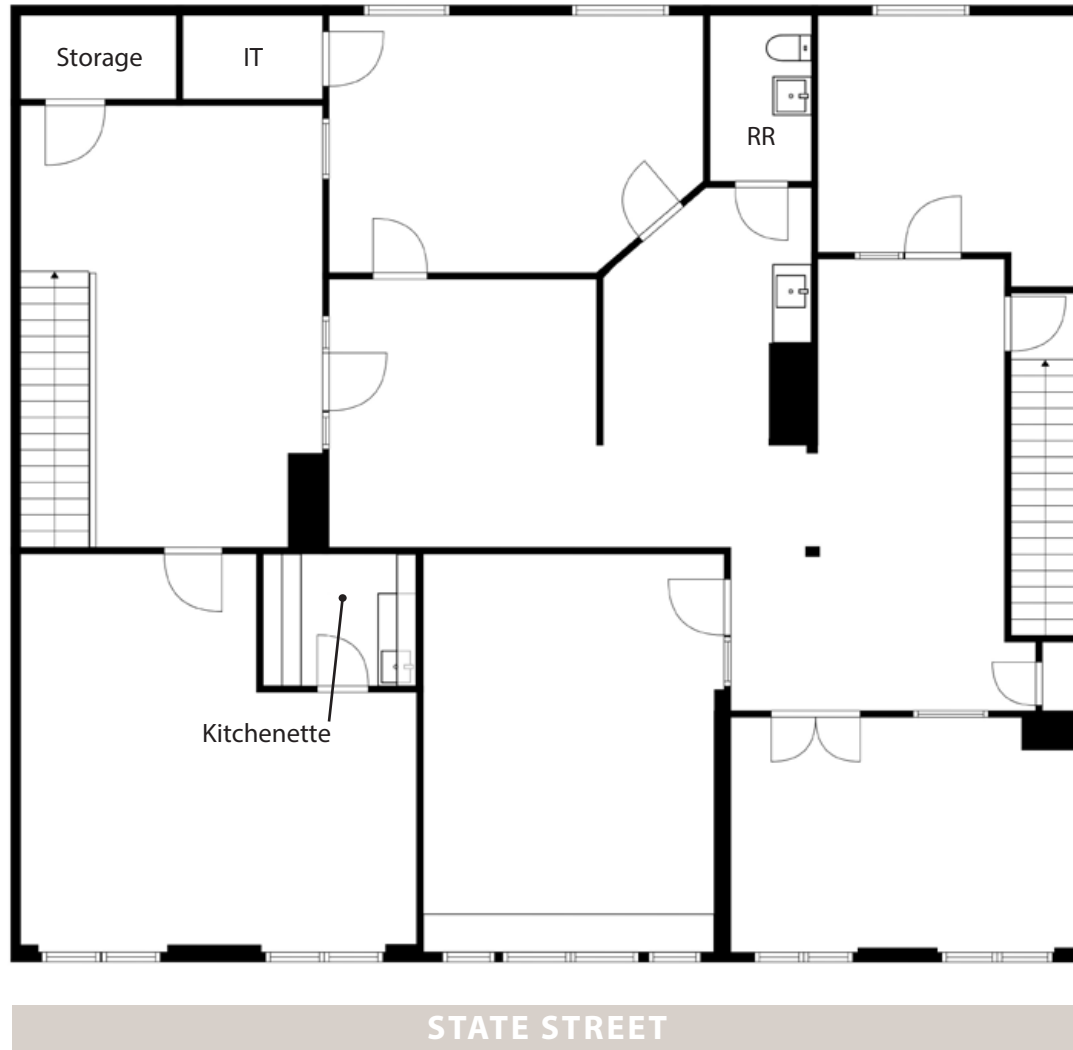
Experience. Integrity. Trust.
Since 1993

Kristopher Roth
805.898.4361
kris@hayescommercial.com
lic. 01482732

Caitlin Hensel
805.898.4374
caitlin@hayescommercial.com
lic. 01893341



FLOOR PLAN



Experience. Integrity. Trust.
Since 1993

Kristopher Roth
805.898.4361
kris@hayescommercial.com
lic. 01482732

Caitlin Hensel
805.898.4374
caitlin@hayescommercial.com
lic. 01893341



AREA OVERVIEW

- | | | | |
|----------------------|--------------------------|---------------------------|---------------------|
| 1 Bank of America | 9 Zumiez | 17 Restoration Hardware | 25 Starbucks |
| 2 H&M | 10 Bluemercury | 18 The Shade Store | 26 Sonos |
| 3 Creations Boutique | 11 Lululemon | 19 Nectar Clothing | 27 REI |
| 4 El Paseo | 12 Banana Republic | 20 The Habit | 28 California Hotel |
| 5 Bryant & Sons | 13 McConnell's | 21 Urban Outfitters | 29 MOXI |
| 6 Sephora | 14 Blenders in the Grass | 22 Vans | 30 Stearns Wharf |
| 7 Coach | 15 Vuori | 23 House of Clues | |
| 8 Cafe Coffee | 16 Hollister Co | 24 Cost Plus World Market | |



Experience. Integrity. Trust.
Since 1993

Kristopher Roth
805.898.4361
kris@hayescommercial.com
lic. 01482732

Caitlin Hensel
805.898.4374
caitlin@hayescommercial.com
lic. 01893341

