

## STORKE PLAZA

- Target
- Dune
- Chipotle
- Ca'Dario
- Rusty's
- Cajun Kitchen
- SloDoCo
- Giovanni's Pizza
- Jerry's Pollofino
- Lilly's Taqueria

6950 Hollister Ave  
GOLETA, CA

REMODEL UNDERWAY

**For Lease** | Office Suites in High-Amenity Area | **1,739 - 3,118 SF**

*Experience. Integrity. Trust.*  
Since 1993

**Francois DeJohn**  
805.898.4365  
[fran@hayescommercial.com](mailto:fran@hayescommercial.com)  
lic. 01144570

**Greg Bartholomew**  
805.898.4395  
[greg@hayescommercial.com](mailto:greg@hayescommercial.com)  
lic. 01131126



## PROPERTY SUMMARY



## PROPERTY DETAILS

Freshly remodeled office suites located in the amenity-rich area near US 101, Santa Barbara Airport, UCSB, and countless retail and restaurant conveniences amongst three major shopping centers. Property offers onsite gym and showers and renovated common areas (see page 5 for design elements).

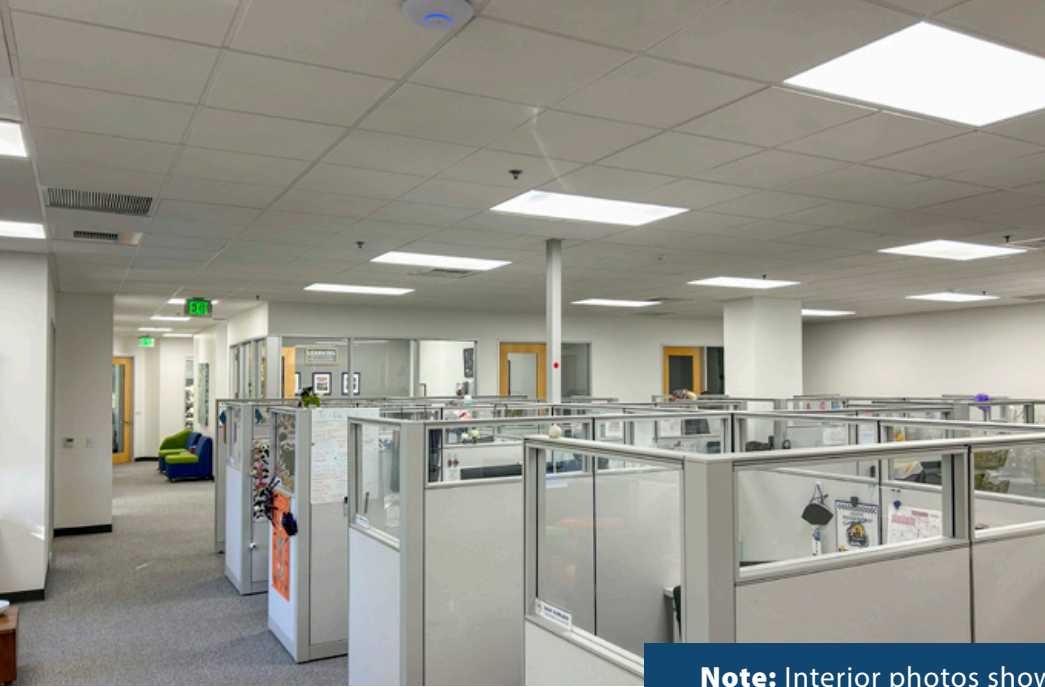
<b>Rate</b>	\$1.95 NNN (.75)	
<b>Available</b>	Suite 202	3,118 SF
	Suite 204	2,981 SF
	Suite 205	1,887 SF
	Suite 206	2,401 SF
	Suite 207	2,195 SF
	Suite 208	1,739 SF
	Suite 209	2,970 SF
<b>Floor</b>	2nd	
<b>Available</b>	To be completed Q1 2026	
<b>Term</b>	3+ years	
<b>Parking</b>	3/1,000 SF	
<b>HVAC</b>	Throughout	
<b>Restrooms</b>	Common	
<b>Amenities</b>	Onsite gym, showers	
<b>To Show</b>	Call listing agent	

Experience. Integrity. Trust.  
Since 1993

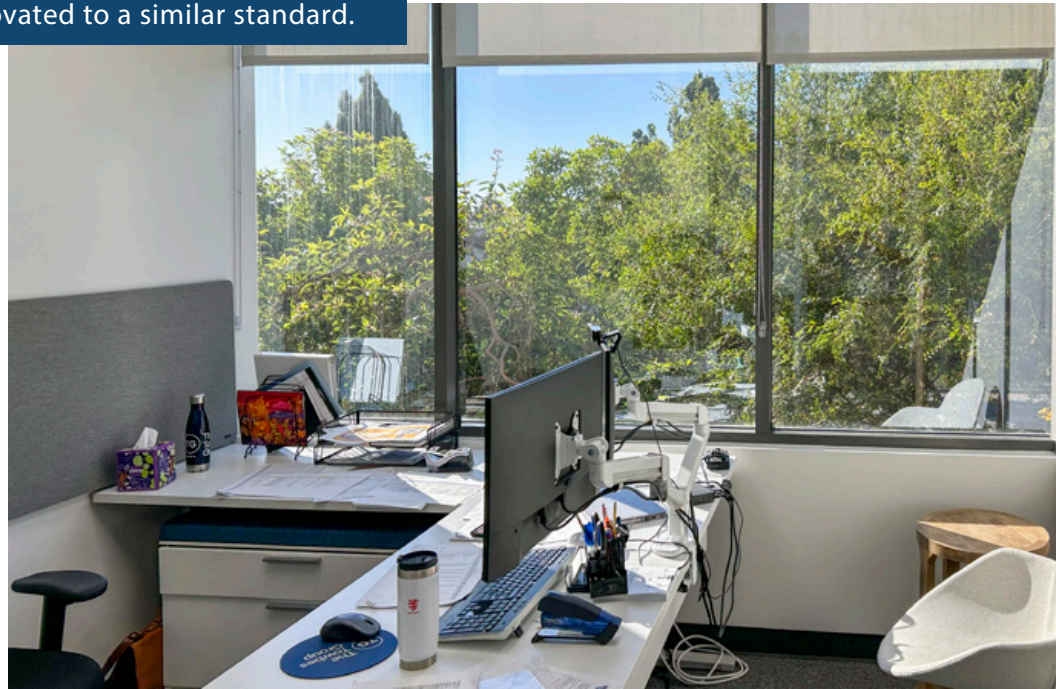
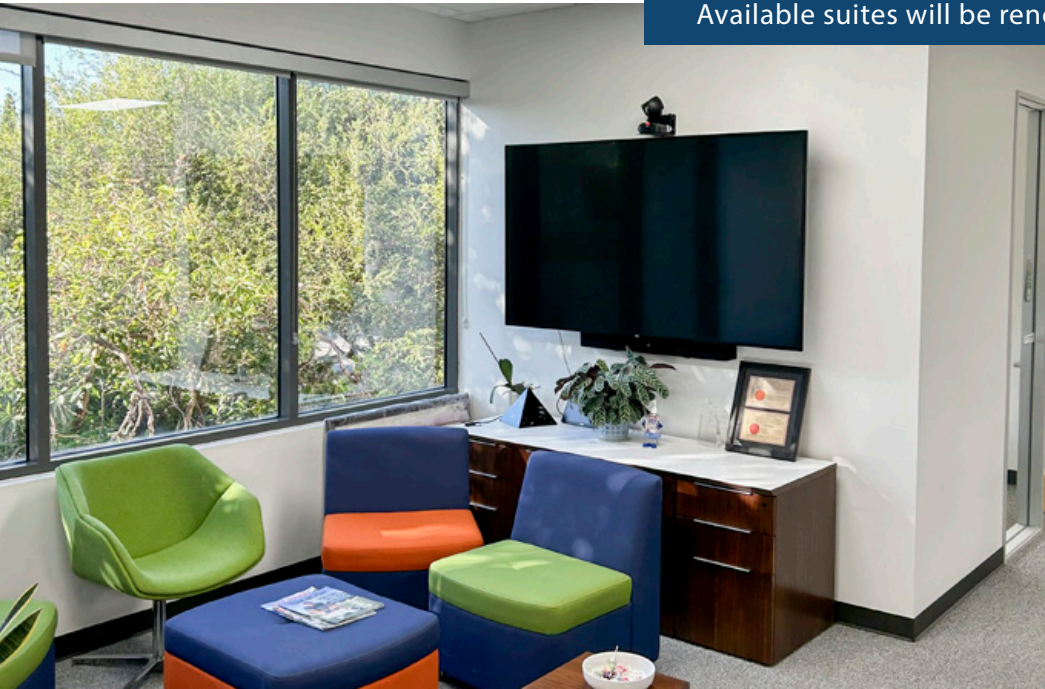
**Francois DeJohn**  
805.898.4365  
[fran@hayescommercial.com](mailto:fran@hayescommercial.com)  
lic. 01144570

**Greg Bartholomew**  
805.898.4395  
[greg@hayescommercial.com](mailto:greg@hayescommercial.com)  
lic. 01131126





**Note:** Interior photos show a recently renovated suite. Available suites will be renovated to a similar standard.



*Experience. Integrity. Trust.*  
*Since 1993*

**Francois DeJohn**  
805.898.4365  
[fran@hayescommercial.com](mailto:fran@hayescommercial.com)  
lic. 01144570

**Greg Bartholomew**  
805.898.4395  
[greg@hayescommercial.com](mailto:greg@hayescommercial.com)  
lic. 01131126



# FLOOR PLAN



*Experience. Integrity. Trust.*  
Since 1993

**Francois DeJohn**  
805.898.4365  
[fran@hayescommercial.com](mailto:fran@hayescommercial.com)  
lic. 01144570

**Greg Bartholomew**  
805.898.4395  
[greg@hayescommercial.com](mailto:greg@hayescommercial.com)  
lic. 01131126



# DESIGN ELEMENTS



Picture Light at artwork where occurs



OPT 1: 24"x24" Terrazzo tile inset in (E) metal inlay



OPT 2: 24"x24" Terrazzo tile inset in (E) metal inlay



OPT 3: 12"x24" Stone tile to match existing stair

Suspended decorative lighting at stairwell



78" Black Leather Sofa



TYP paint throughout



Accent paint at metal reveals



Accent paint at corridor reveals



Proposed planters

Sisal area rug



Bludot Marquina Black marble coffee table



Black Leather Club Chair



Stainless steel & black marble side table

The common areas at 6950 Hollister are being renovated using these design elements.

*Experience. Integrity. Trust.*  
Since 1993

**Francois DeJohn**  
805.898.4365  
fran@hayescommercial.com  
lic. 01144570

**Greg Bartholomew**  
805.898.4395  
greg@hayescommercial.com  
lic. 01131126



# AREA OVERVIEW



**HOLLISTER VILLAGE**

- Kyle's Kitchen
- TAP Thai
- Cottage Urgent Care
- PetSmart
- Verizon
- CVS Pharmacy
- Smart & Final
- Jeannine's

**SITE**

Hollister Ave

**CAMINO REAL MARKETPLACE**

- Target
- Home Depot
- Costco
- Home Goods
- Staples
- Ross
- Chili's
- Natural Cafe
- Los Agaves
- Mesa Burger

**STORKE PLAZA**

- Target
- Dune
- Chipotle
- Ca'Dario
- Rusty's
- Cajun Kitchen
- SloDoCo
- Giovanni's Pizza
- Jerry's Pollofino
- Lilly's Taqueria

Storke Rd



Experience. Integrity. Trust.  
Since 1993

Francois DeJohn  
805.898.4365  
fran@hayescommercial.com  
lic. 01144570

Greg Bartholomew  
805.898.4395  
greg@hayescommercial.com  
lic. 01131126





Experience. Integrity. Trust.  
Since 1993

Francois DeJohn  
805.898.4365  
fran@hayescommercial.com  
lic. 01144570

Greg Bartholomew  
805.898.4395  
greg@hayescommercial.com  
lic. 01131126





# STORKE & HOLLISTER

Goleta's Retail Hub




Storke & Hollister is Goleta's most active and critical intersection, representing the height of convenience and commercial activity. National names like Target and Costco anchor multiple shopping centers, alongside more local flavors like Los Arroyos and Natural Cafe. Adding yet another layer to the rich tapestry of amenities in this area, Highway 101, UCSB, Cottage Hospital, and Santa Barbara Airport are all mere minutes away.



**'Biker's Paradise'**


BIKESCORE  
**98**

Daily errands can be done on a bike



AVERAGE HOUSEHOLD INCOME  
(5 mi radius)

**\$145,611**



AREA POPULATION  
(5 mi radius)

**77,024**

Source: esri. 2024 demographics centered on 250 Storke Rd.



*Experience. Integrity. Trust.*  
Since 1993

**Francois DeJohn**  
805.898.4365  
fran@hayescommercial.com  
lic. 01144570

**Greg Bartholomew**  
805.898.4395  
greg@hayescommercial.com  
lic. 01131126

