

5290 Overpass Rd

GOLETA, CA

5290

CREEKSIDE
Plaza

For Lease | Flexible Office Condo in Garden Setting | 1,115 SF

Experience. Integrity. Trust.
Since 1993

Dan Ferrick
805.898.4371
dferrick@hayescommercial.com
lic. 01936711



PROPERTY SUMMARY

Office condo available for lease at Creekside Plaza, a peaceful garden-style complex with walking and biking trails nearby. Location offers easy access to Hwy 101, Magnolia Shopping Center, downtown Santa Barbara, and Santa Barbara Airport.

Unit: 110

Size: 1,115 SF

Rate: \$2,600/mo FSG

Floor: First

Parking: 3 spaces
(plus plentiful visitor parking)

Restrooms: Common

Elevator: Yes

Zoning: OI

To Show: Call listing agents; please do not disturb tenants

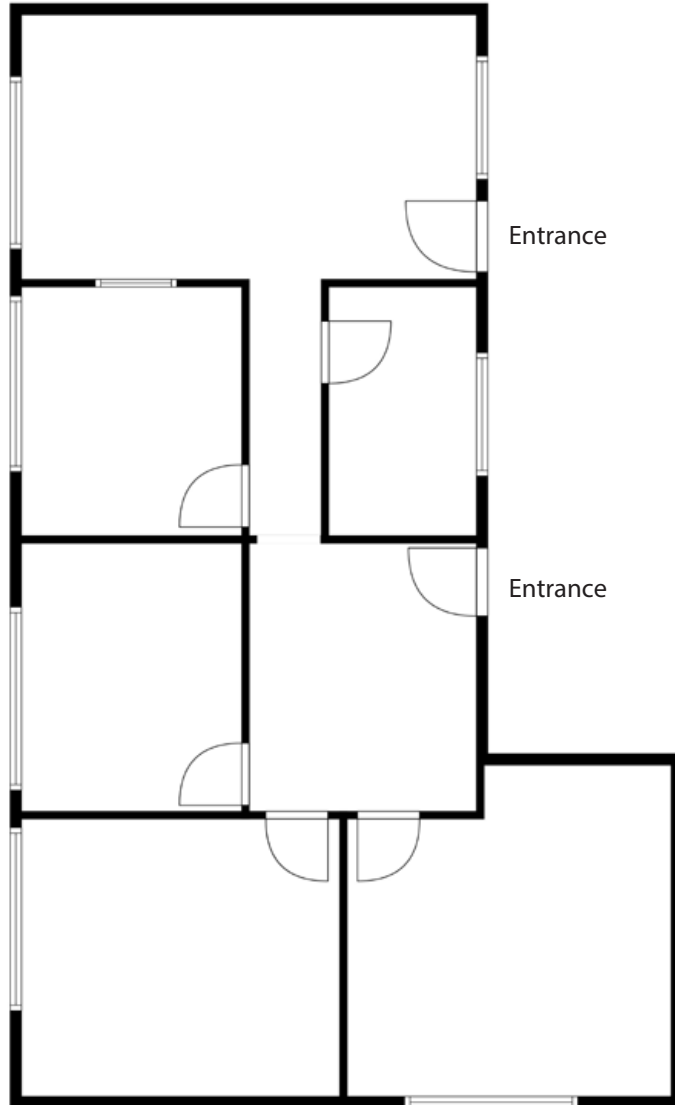


Experience. Integrity. Trust.
Since 1993

Dan Ferrick
805.898.4371
dferrick@hayescommercial.com
lic. 01936711



UNIT 110



Experience. Integrity. Trust.
Since 1993

Dan Ferrick
805.898.4371
dferrick@hayescommercial.com
lic. 01936711



UNIT 110



Experience. Integrity. Trust.
Since 1993

Dan Ferrick
805.898.4371
dferrick@hayescommercial.com
lic. 01936711





Experience. Integrity. Trust.
Since 1993

Dan Ferrick
805.898.4371
dferrick@hayescommercial.com
lic. 01936711



GOLETA



32,072
current residents



\$159,350
avg. household income



64%
college-educated



Conveniently located just 8 miles from Santa Barbara, the city of Goleta is nestled between a backdrop of majestic mountains and sprawling coastal bluffs. Home to beautifully-designed business parks, safe and family-oriented neighborhoods, and a world-class university, Goleta is among California's premier locations for businesses.



Source: esri. 2023 demographics

Experience. Integrity. Trust.
Since 1993

Dan Ferrick
805.898.4371
dferrick@hayescommercial.com
lic. 01936711

