

# 5290 Overpass Rd Units 110 or 226

GOLETA, CA

5290

CREEKSIDE  
Plaza

**For Lease** | Flexible Office Condos in Garden Setting | 252 or 1,115 SF

*Experience. Integrity. Trust.*  
Since 1993

**Dan Ferrick**  
805.898.4371  
[dferrick@hayescommercial.com](mailto:dferrick@hayescommercial.com)  
lic. 01936711





## PROPERTY SUMMARY

Office condos available for lease at Creekside Plaza, a peaceful garden-style complex with walking and biking trails nearby. Location offers easy access to Hwy 101, Magnolia Shopping Center, downtown Santa Barbara, and Santa Barbara Airport.

<b>Unit:</b>	<u>110</u>	<u>226</u>
<b>Size:</b>	1,115 SF	252 SF
<b>Rate:</b>	\$2,600/mo FSG	\$570/mo FSG
<b>Floor:</b>	First	Second
<b>Parking:</b>	3 spaces (plus plentiful visitor parking)	1 space
<b>Restrooms:</b>	Common	Common
<b>Elevator:</b>	Yes	
<b>Zoning:</b>	OI	
<b>To Show:</b>	Call listing agents; please do not disturb tenants	



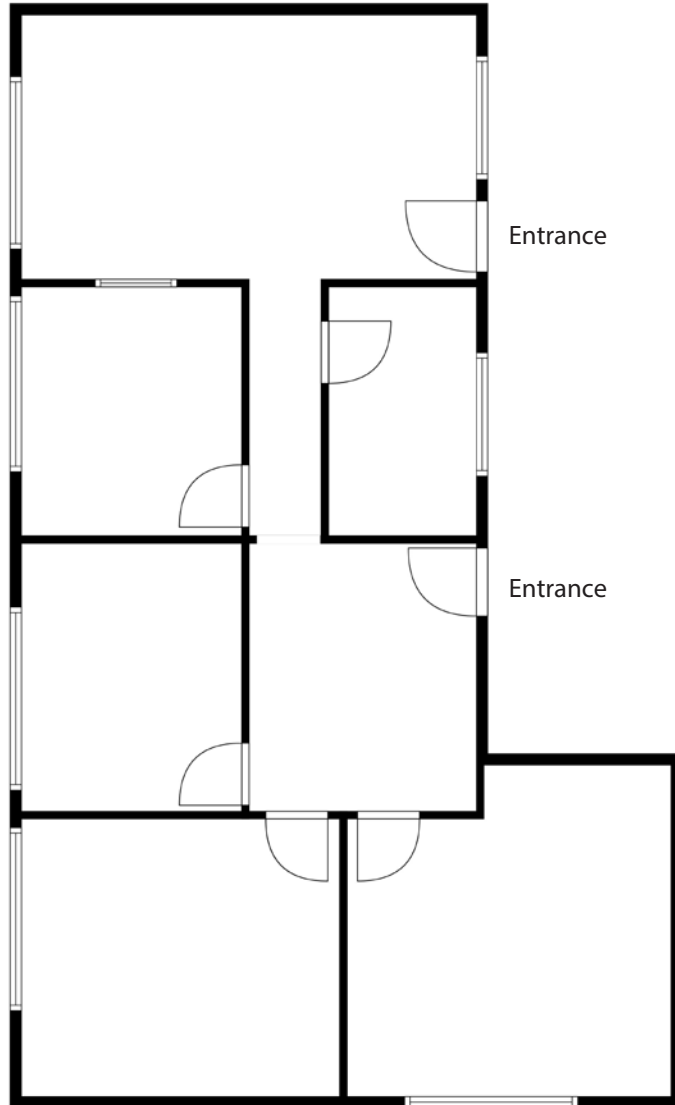
*Experience. Integrity. Trust.*  
Since 1993

**Dan Ferrick**  
805.898.4371  
dferrick@hayescommercial.com  
lic. 01936711





## UNIT 110



*Experience. Integrity. Trust.*  
*Since 1993*

**Dan Ferrick**  
**805.898.4371**  
[dferrick@hayescommercial.com](mailto:dferrick@hayescommercial.com)  
lic. 01936711



UNIT 110

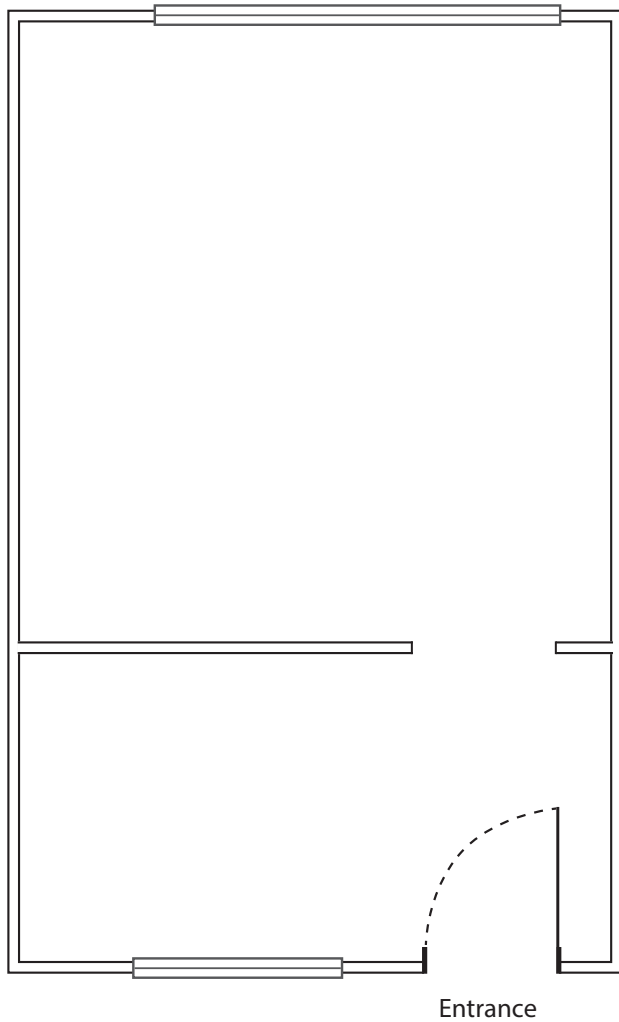


*Experience. Integrity. Trust.*  
*Since 1993*

**Dan Ferrick**  
**805.898.4371**  
[dferrick@hayescommercial.com](mailto:dferrick@hayescommercial.com)  
lic. 01936711

 **Hayes**  
COMMERCIAL GROUP

## UNIT 226



*Experience. Integrity. Trust.*  
*Since 1993*

**Dan Ferrick**  
805.898.4371  
[dferrick@hayescommercial.com](mailto:dferrick@hayescommercial.com)  
lic. 01936711







*Experience. Integrity. Trust.*  
*Since 1993*

**Dan Ferrick**  
805.898.4371  
[dferrick@hayescommercial.com](mailto:dferrick@hayescommercial.com)  
lic. 01936711





# GOLETA



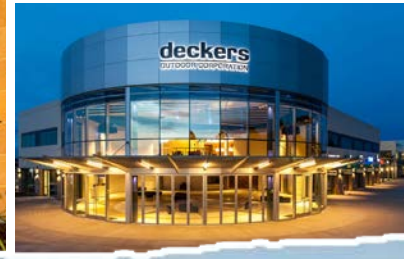
32,072  
current residents



\$159,350  
avg. household income



64%  
college-educated



Conveniently located just 8 miles from Santa Barbara, the city of Goleta is nestled between a backdrop of majestic mountains and sprawling coastal bluffs. Home to beautifully-designed business parks, safe and family-oriented neighborhoods, and a world-class university, Goleta is among California's premier locations for businesses.



Source: esri. 2023 demographics

*Experience. Integrity. Trust.*  
Since 1993

**Dan Ferrick**  
805.898.4371  
[dferrick@hayescommercial.com](mailto:dferrick@hayescommercial.com)  
lic. 01936711

 **Hayes**  
COMMERCIAL GROUP