

506 Chapala St

SANTA BARBARA, CA



For Sublease | Downtown Office/Retail Space with On-Site Parking | **2,477 - 6,308 SF**

Experience. Integrity. Trust.
Since 1993

Kristopher Roth
805.898.4361
kris@hayescommercial.com
lic. 01482732

Caitlin Hensel
805.898.4374
caitlin@hayescommercial.com
lic. 01893341



PROPERTY SUMMARY

The Funk Zone. Paseo Nuevo. The Mill. This prominent Art Deco building is central to all three, and a half mile to the beach. Located on the corner of Chapala and Haley Streets in downtown Santa Barbara, this divisible space offers ample parking, versatile layout, high ceilings and nicely appointed interiors.

Size 2,477; 3,811; 6,308 SF
Rate \$3.95 MGR
Term Lease expires 5/31/27;
longer term possible
Availability CLA
Zoning M-C
Ceilings 17.5'

Roll-up One, 13.5W x 14.5H
Furniture Potentially available
Parking 13 spaces total on-site, street
parking and several city
parking lots nearby
HVAC Throughout
To Show Call listing agent

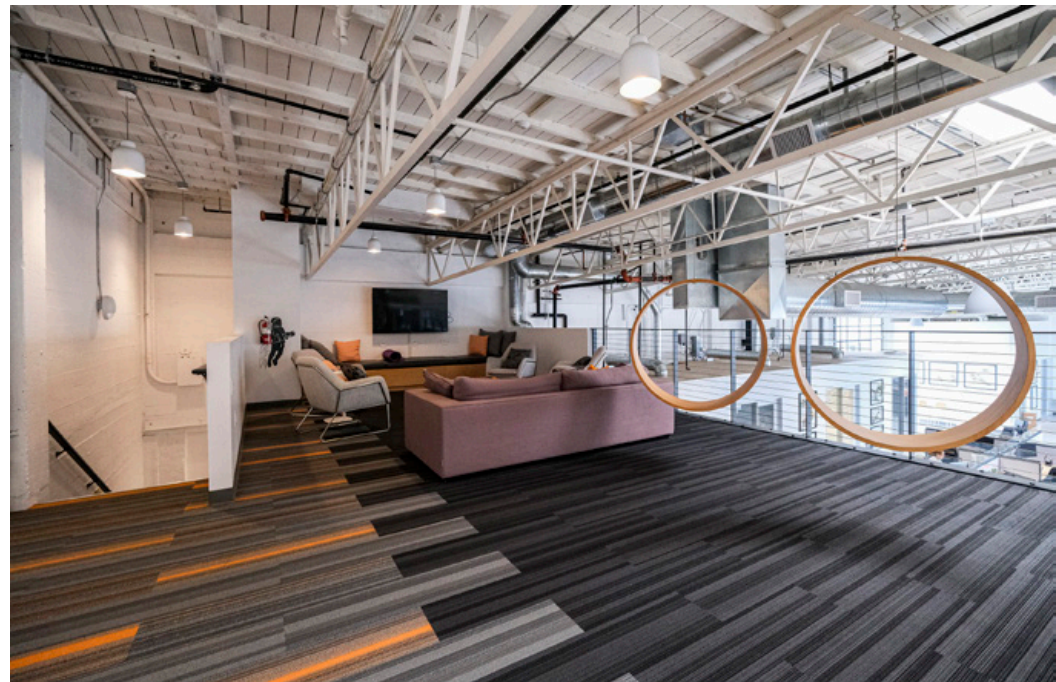
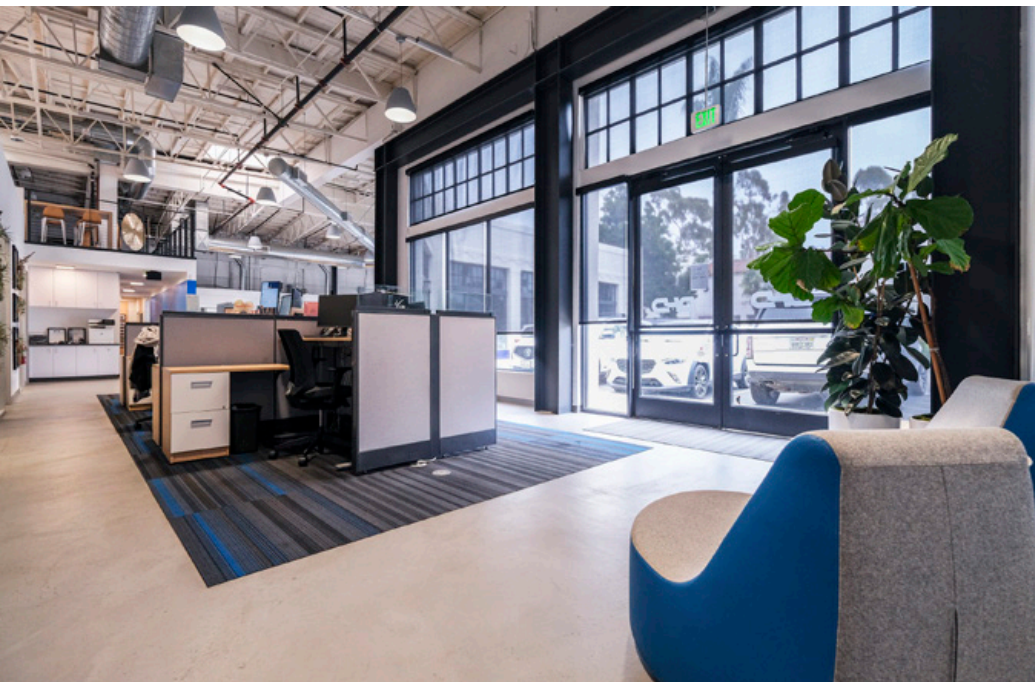


Experience. Integrity. Trust.
Since 1993

Kristopher Roth
805.898.4361
kris@hayescommercial.com
lic. 01482732

Caitlin Hensel
805.898.4374
caitlin@hayescommercial.com
lic. 01893341





Experience. Integrity. Trust.
Since 1993

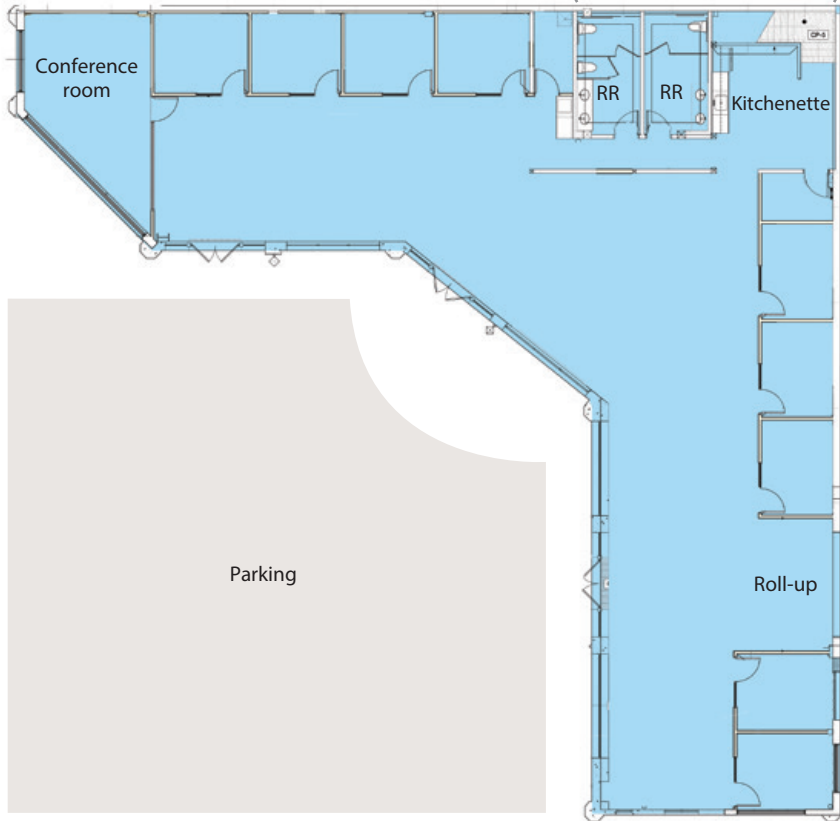
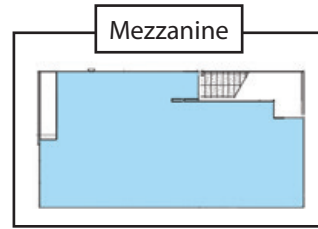
Kristopher Roth
805.898.4361
kris@hayescommercial.com
lic. 01482732

Caitlin Hensel
805.898.4374
caitlin@hayescommercial.com
lic. 01893341



Available
6,308 SF

SINGLE-TENANT

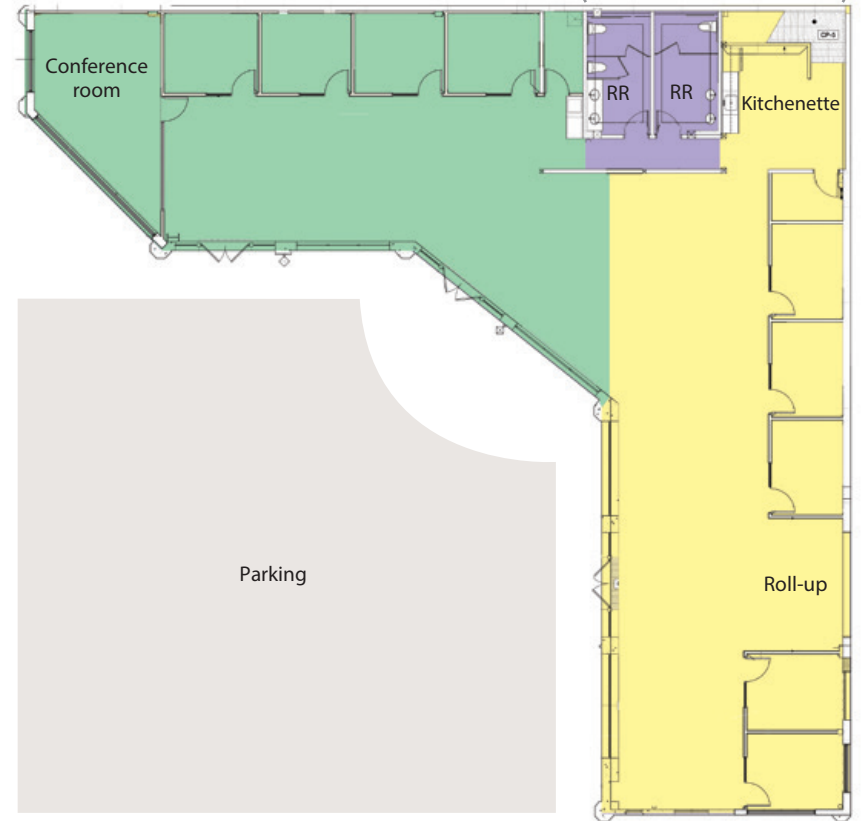
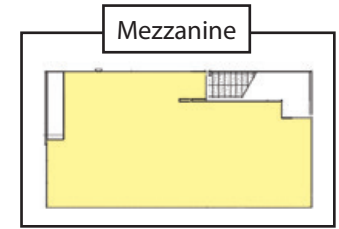


Available
2,477 SF

Available
3,811 SF

Common

MULTI-TENANT



Experience. Integrity. Trust.
Since 1993

Kristopher Roth
805.898.4361
kris@hayescommercial.com
lic. 01482732

Caitlin Hensel
805.898.4374
caitlin@hayescommercial.com
lic. 01893341

 **Hayes**
COMMERCIAL GROUP

AREA OVERVIEW



Experience. Integrity. Trust.
Since 1993

Kristopher Roth
805.898.4361
kris@hayescommercial.com
lic. 01482732

Caitlin Hensel
805.898.4374
caitlin@hayescommercial.com
lic. 01893341

