



FOR LEASE

425 W Central Ave, Lompoc, CA | Entire Second Floor of Class A Office | 9,323 SF

Experience. Integrity. Trust.
Since 1993

Michael Martz, MBA, CCIM
805.898.4363
michael@hayescommercial.com
lic. 01391838



222 E. Carrillo Street, Suite 101, Santa Barbara, California 93101 | HayesCommercial.com

Property Overview

The entire second floor will be available in this Class A office building with abundant on-site parking, on a fantastic corner location adjacent to the Walmart Shopping Center and near restaurants, shopping and other amenities. Built out to a high standard in 2008 for Community Health Center, who will be moving to a larger location. All improvements in excellent condition, ready to use as is or modify to specific needs.



Address:	425 W Central Ave, Lompoc, CA
Space:	Entire second floor
Size:	9,323 SF
Rate:	Negotiable
NNNs:	\$0.65 PSF
Available:	January 1, 2021
Term:	5-10 years (with options)
Parking:	Abundant on-site
Restroom:	6 private
HVAC:	Yes, throughout
Elevator:	Yes
Sprinklers:	Yes, throughout
Other tenants:	Kendall Shepard Eye Center, Dignity Health HomeHealth
To Show:	Call listing agent

Experience. Integrity. Trust.
Since 1993

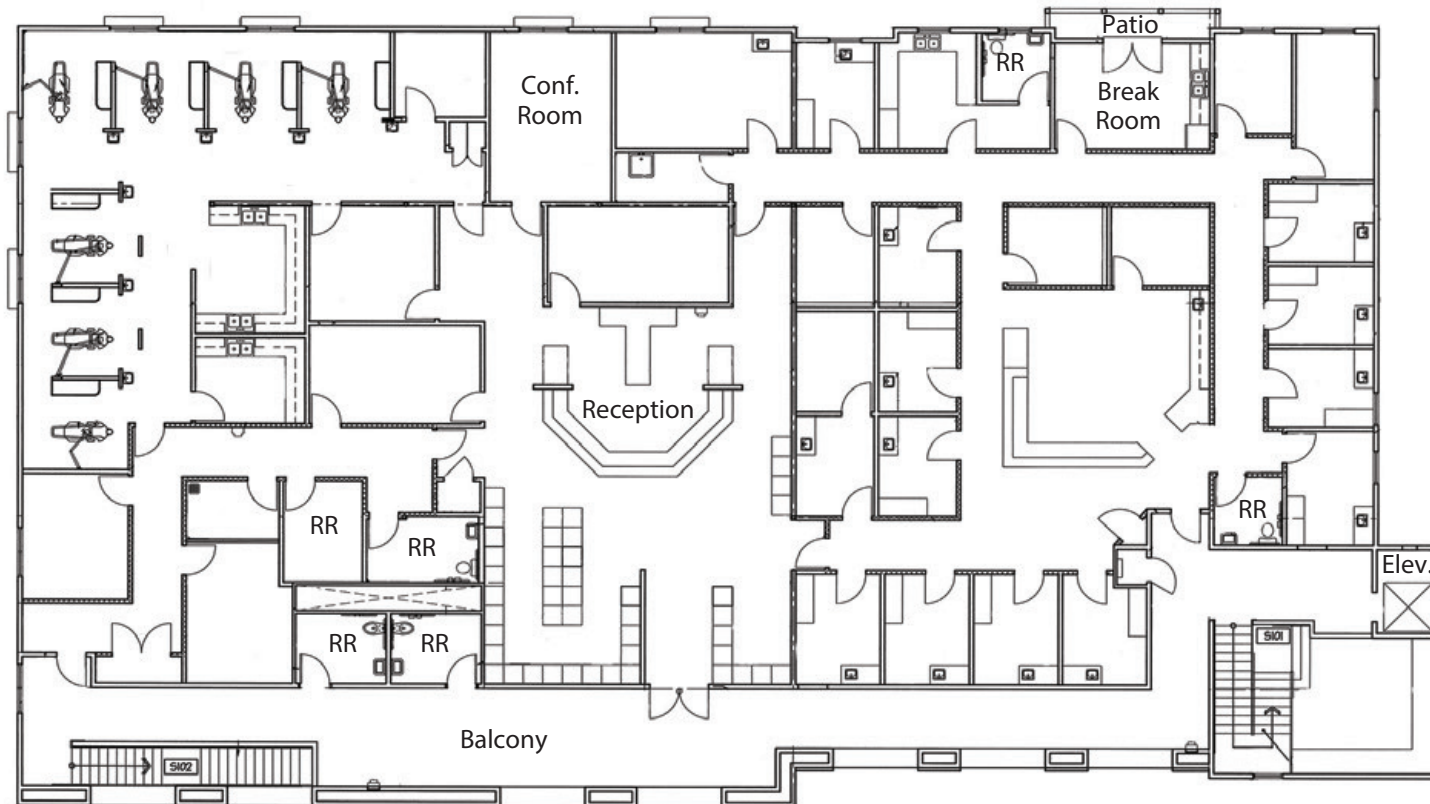
Michael Martz, MBA, CCIM
805.898.4363
michael@hayescommercial.com
lic. 01391838



FOR LEASE

425 W Central Ave, Lompoc, CA | Entire Second Floor of Class A Office | 9,323 SF

Second Floor Plan



Experience. Integrity. Trust.
Since 1993

Michael Martz, MBA, CCIM
805.898.4363
michael@hayescommercial.com
lic. 01391838



222 E. Carrillo Street, Suite 101, Santa Barbara, California 93101 | HayesCommercial.com