



FOR LEASE

3700 State St, Santa Barbara, CA | Second-Floor Class A Office Suite | 1,313 SF

*Experience. Integrity. Trust.
Since 1993*

Francois DeJohn
805.898.4365
fran@hayescommercial.com
lic. 01144570

Kristopher Roth
805.898.4361
kris@hayescommercial.com
lic. 01482732



222 E. Carrillo Street, Suite 101, Santa Barbara, California 93101 | HayesCommercial.com

FOR LEASE

3700 State St, Santa Barbara, CA | Second-Floor Class A Office Suite | 1,313 SF

Property Overview

Arguably the finest professional Class A office building in the neighborhood. This efficient suite offers ample natural light, first-class improvements, excellent parking, and views down State Street and of the Santa Barbara mountains. Tenants in the building include Fidelity National Title, Channel Wealth, Wintrust Mortgage, Homebridge Financial Services, and AppleOne.



Suite:	220
Size:	1,313 SF
Available:	Now
Floor:	Second
Building Size:	25,705 SF
Rate:	\$2.75 NNN (.86)
Utilities:	\$0.23
Term:	3 - 5 years
Restrooms:	Common
Parking:	3.7/1,000 SF
Zoning:	R-O
Elevator:	Yes
To Show:	Call listing agents

Experience. Integrity. Trust.
Since 1993

Francois DeJohn
805.898.4365
fran@hayescommercial.com
lic. 01144570

Kristopher Roth
805.898.4361
kris@hayescommercial.com
lic. 01482732

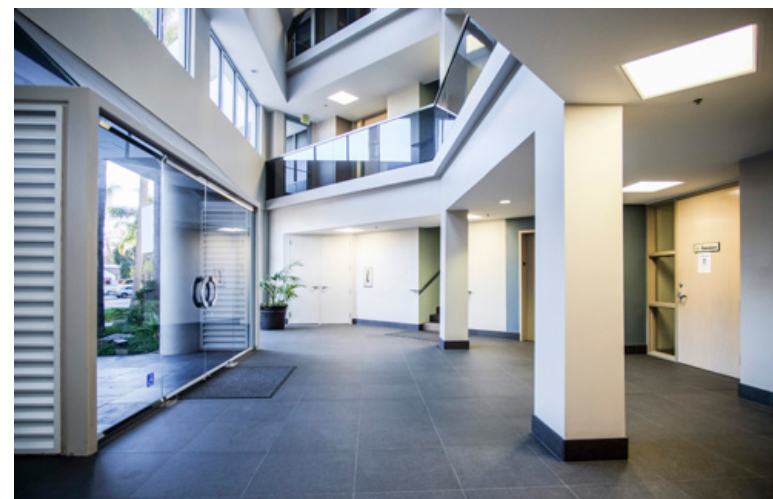
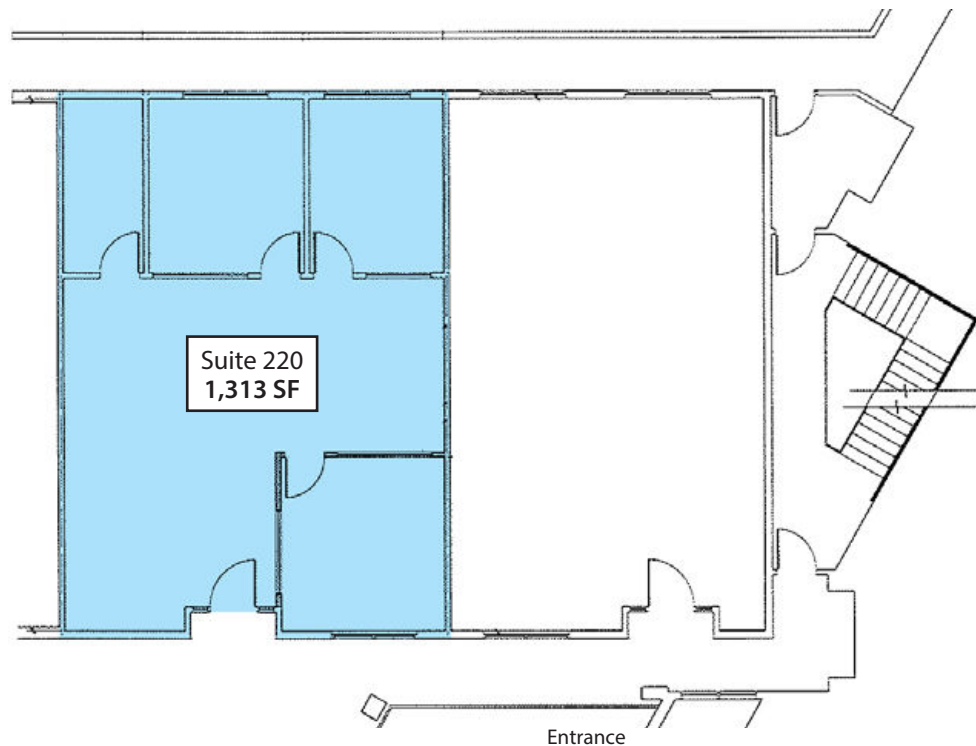


222 E. Carrillo Street, Suite 101, Santa Barbara, California 93101 | HayesCommercial.com

FOR LEASE

3700 State St, Santa Barbara, CA | Second-Floor Class A Office Suite | 1,313 SF

Second Floor Plan — Suite 220



Common lobby

*Experience. Integrity. Trust.
Since 1993*

Francois DeJohn
805.898.4365
fran@hayescommercial.com
lic. 01144570

Kristopher Roth
805.898.4361
kris@hayescommercial.com
lic. 01482732



222 E. Carrillo Street, Suite 101, Santa Barbara, California 93101 | HayesCommercial.com

Aerial looking West

US
101

Whole Foods

La Cumbre
Plaza

Five Points
Shopping
Center

Target

Montecito
Bank & Trust

Wells Fargo

Bank of
America

Bank of
the West

3700 State St
Santa Barbara, CA

STATE ST

 **Hayes**
COMMERCIAL GROUP