



**FOR LEASE**

**3700 State St, Santa Barbara, CA | Class A Office Suite | 875 SF**

*Experience. Integrity. Trust.  
Since 1993*

**Francois DeJohn**  
**805.898.4365**  
fran@hayescommercial.com  
lic. 01144570

**Kristopher Roth**  
**805.898.4361**  
kris@hayescommercial.com  
lic. 01482732



222 E. Carrillo Street, Suite 101, Santa Barbara, California 93101 | HayesCommercial.com



# FOR LEASE

3700 State St, Santa Barbara, CA | Class A Office Suite | 875 SF

## Property Overview



Arguably the finest professional Class A office space in the neighborhood. This efficiently laid out suite offers ample natural light, first-class improvements, excellent parking, and views down State Street and of the Santa Barbara mountains. Tenants in the building include Fidelity National Title, Ameriflex, Wintrust Mortgage, LegalZoom, and AppleOne.

Size:	875 SF
Available:	Now
Floor:	Third
Building Size:	25,705 SF
Rate:	\$2.75 NNN (.81)
Utilities:	\$0.22
Term:	3 - 5 years
Restrooms:	Common
Parking:	3.7/1,000 SF
Zoning:	R-O
Elevator:	Yes
To Show:	Call listing agents

*Experience. Integrity. Trust.*  
Since 1993

**Francois DeJohn**  
805.898.4365  
fran@hayescommercial.com  
lic. 01144570

**Kristopher Roth**  
805.898.4361  
kris@hayescommercial.com  
lic. 01482732

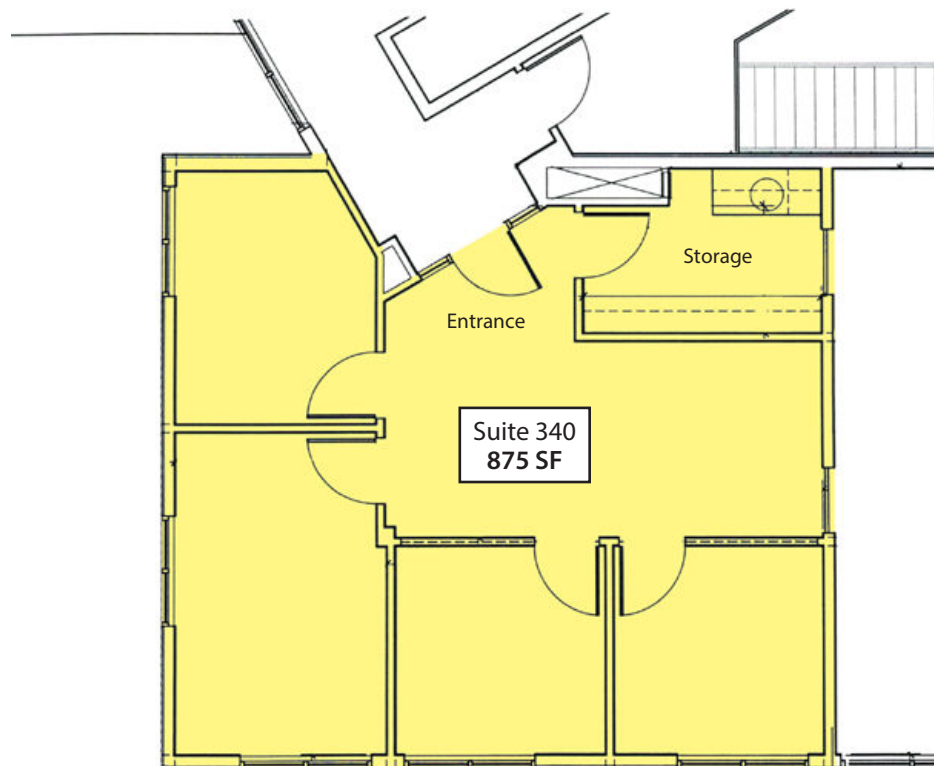


222 E. Carrillo Street, Suite 101, Santa Barbara, California 93101 | HayesCommercial.com

**FOR LEASE**

**3700 State St, Santa Barbara, CA | Class A Office Suite | 875 SF**

**Third Floor Plan — Suite 340**



*Experience. Integrity. Trust.  
Since 1993*

**Francois DeJohn**  
**805.898.4365**  
fran@hayescommercial.com  
lic. 01144570

**Kristopher Roth**  
**805.898.4361**  
kris@hayescommercial.com  
lic. 01482732



**222 E. Carrillo Street, Suite 101, Santa Barbara, California 93101 | HayesCommercial.com**



*Aerial looking West*

US  
101

STATE ST

Whole Foods

La Cumbre  
Plaza

Five Points  
Shopping  
Center

Target

Montecito  
Bank & Trust

Wells Fargo

Bank of  
America

Bank of  
the West

3700 State St  
Santa Barbara, CA

 **Hayes**  
COMMERCIAL GROUP