

# 30 S La Patera Ln

GOLETA, CA

**MINI-STORAGE  
NOW AVAILABLE**  
*See page 6 for full details.*



**For Lease** | R&D/Warehouse Space with Office | 10,380 - 24,337 SF

*Experience. Integrity. Trust.*  
*Since 1993*

**Caitlin Hensel**  
805.898.4374  
[caitlin@hayescommercial.com](mailto:caitlin@hayescommercial.com)  
lic. 01893341

**Kristopher Roth**  
805.898.4361  
[kris@hayescommercial.com](mailto:kris@hayescommercial.com)  
lic. 01482732



## PROPERTY SUMMARY

Great warehouse and office space in the heart of Goleta near the airport, UCSB, and future Goleta Transit Center. **Unit 8** is a flexible R&D/industrial/office space with high ceilings and potential to convert to clear-span warehouse space with roll-up door. **Unit 9** is warehouse space with kitchenette, conference room, private offices, ground-level loading and access to a shared dock. **Unit 11** is bright and airy second-floor office space with a good mix of open area and private offices. Units 8 and 9 can be combined for a total of 24,337 SF.

	<u>Floor</u>	<u>Size</u>	<u>Ceiling</u>	<u>Available</u>
<i>Unit 8</i>	Ground	11,532 SF	27'	Now
<i>Unit 9</i>	Ground	12,805 SF	27'	Now
<i>Unit 11</i>	Mezzanine	10,380 SF	12'	Now

**Rate:** \$1.10 NNN (.50)

**Bldg. Size:** 179,667 SF

**Term:** 3-10 years

**Parking:** 1.76 / 1,000 SF

**Restrooms:** Two common sets. Unit 8 has private restroom.

**Zoning:** M-RP/BP

**To Show:** CLA

**Tenants:** Kate Farms, Aqua-Flo, Northrop Grumman, Microdyn Nadir, OSI Hardware



**MINI-STORAGE NOW AVAILABLE | See page 6 for details**

*Experience. Integrity. Trust.*  
Since 1993

**Caitlin Hensel**  
805.898.4374  
[caitlin@hayescommercial.com](mailto:caitlin@hayescommercial.com)  
lic. 01893341

**Kristopher Roth**  
805.898.4361  
[kris@hayescommercial.com](mailto:kris@hayescommercial.com)  
lic. 01482732





**Unit 8**



*Experience. Integrity. Trust.*  
Since 1993

**Caitlin Hensel**  
805.898.4374  
[caitlin@hayescommercial.com](mailto:caitlin@hayescommercial.com)  
lic. 01893341

**Kristopher Roth**  
805.898.4361  
[kris@hayescommercial.com](mailto:kris@hayescommercial.com)  
lic. 01482732





**Unit 9**



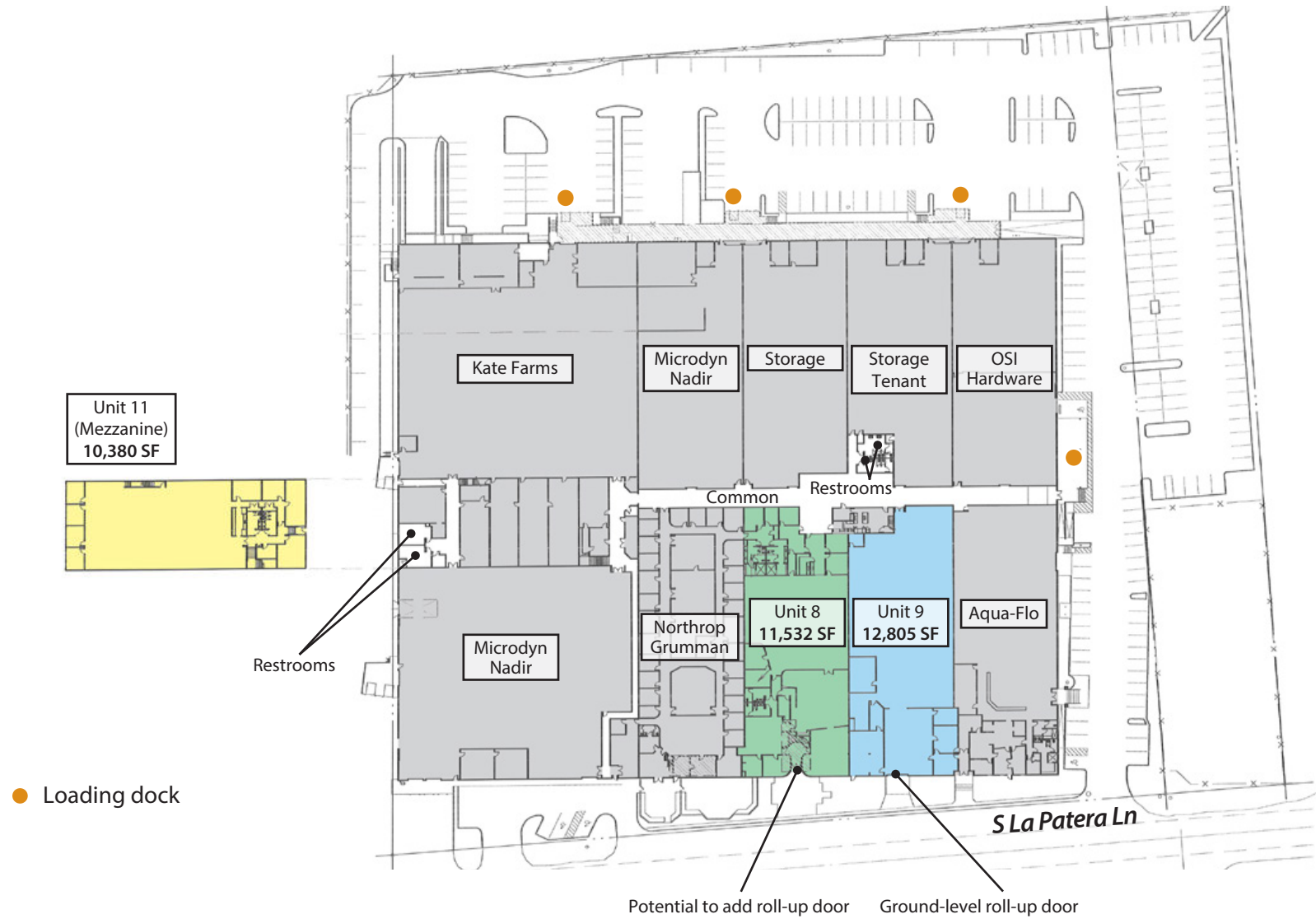
*Experience. Integrity. Trust.*  
*Since 1993*

**Caitlin Hensel**  
805.898.4374  
[caitlin@hayescommercial.com](mailto:caitlin@hayescommercial.com)  
lic. 01893341

**Kristopher Roth**  
805.898.4361  
[kris@hayescommercial.com](mailto:kris@hayescommercial.com)  
lic. 01482732



# FLOOR PLAN



*Experience. Integrity. Trust.*  
Since 1993

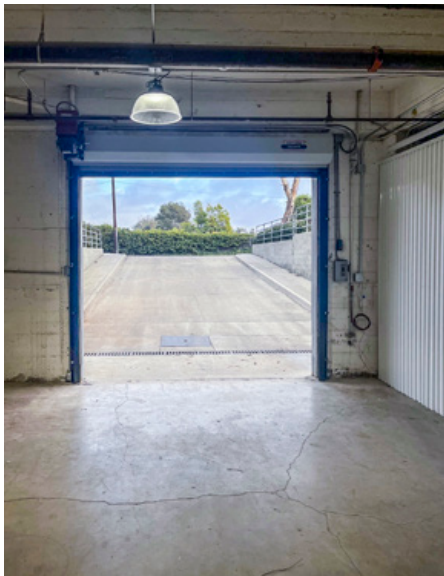
**Caitlin Hensel**  
805.898.4374  
caitlin@hayescommercial.com  
lic. 01893341

**Kristopher Roth**  
805.898.4361  
kris@hayescommercial.com  
lic. 01482732

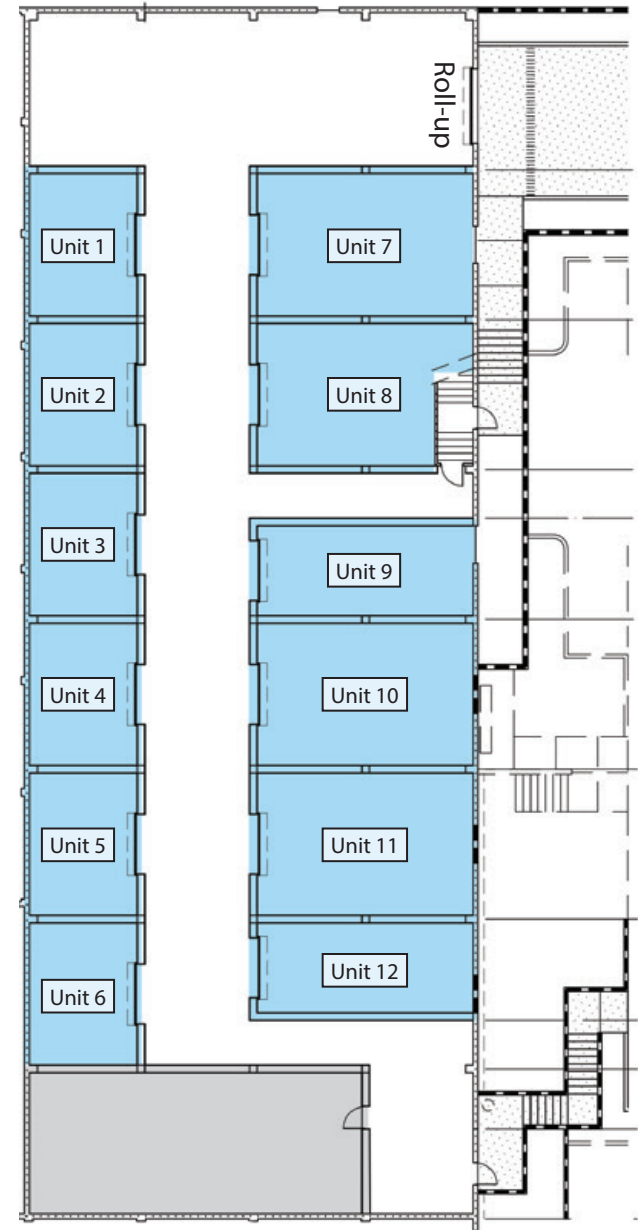


## MINI-STORAGE SPACE

Newly constructed mini-storage units are now available in the basement at 30 S La Patera Ln. Secure and accessible 24/7, with easy loading via roll-up door/truck well at rear of building.



Unit #	Size	Monthly Rate
1	505 SF	\$660
2	505 SF	\$660
3	505 SF	\$660
4	505 SF	\$660
5	505 SF	\$660
6	505 SF	\$660
7	978 SF	\$1,270
8	978 SF	\$1,270
9	685 SF	\$890
10	978 SF	\$1,270
11	978 SF	\$1,270
12	587 SF	\$760



*Experience. Integrity. Trust.*  
Since 1993

**Caitlin Hensel**  
805.898.4374  
caitlin@hayescommercial.com  
lic. 01893341

**Kristopher Roth**  
805.898.4361  
kris@hayescommercial.com  
lic. 01482732



# AREA OVERVIEW



DRIVING DISTANCE TO...	
Goleta commuter Amtrak	350 ft
101 Freeway Access	1.2 mi
Santa Barbara Airport	1.7 mi
UC Santa Barbara	2.7 mi
Downtown Santa Barbara	9.6 mi
Los Angeles	105 mi

- NEIGHBORING BUSINESSES
1. Direct Relief
  2. Fire station
  3. Southern California Edison
  4. Seek Thermal  
Asylum Research
  5. Residence Inn by Marriott
  6. GraphicInk
  7. Bruker Nano Surface
  8. MicroDyn Nadir
  9. Pacific Design Technologies
  10. Goleta commuter Amtrak
  11. Bardex
  12. Innovative Micro Technologies
  13. Raytheon
  14. Enerpro
  15. Biopac Systems
  16. Freedom Photonics
  17. Vitamin Angels  
Strategic Health Partners
  18. City of Goleta
  19. Resonant

Experience. Integrity. Trust.  
Since 1993

**Caitlin Hensel**  
805.898.4374  
[caitlin@hayescommercial.com](mailto:caitlin@hayescommercial.com)  
lic. 01893341

**Kristopher Roth**  
805.898.4361  
[kris@hayescommercial.com](mailto:kris@hayescommercial.com)  
lic. 01482732

