

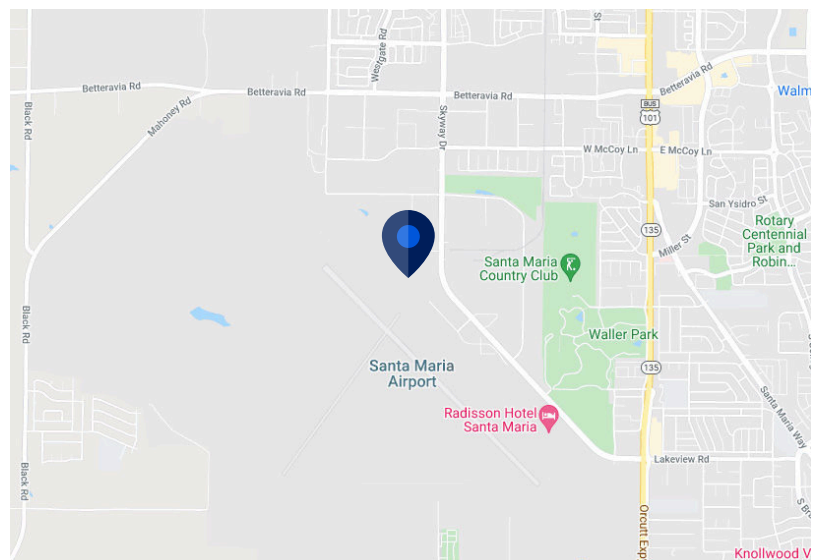
**For Sublease**

## 2811 Airpark Drive

Santa Maria, CA

### Space Profiles:

<b>Sublease</b>	2nd Floor or Entire Building
<b>RSF</b>	18,150-36,300 SF
<b>Option 1</b>	2nd Floor - 18,150 SF
<b>Option 2</b>	Entire Building - 36,300 SF
<b>Rental Rate</b>	\$1.50 NNN
<b>OpEx</b>	\$0.38
<b>LED</b>	12/31/29 (negotiable)
<b>Furniture</b>	Plug and Play Negotiable
<b>Notes</b>	Building includes Lab Space, Multiple Kitchens, Refrigeration, Theatre, Loading Dock



### Contact:



**Michael Martz**

805.898.4363  
michael@hayescommercial.com  
BRE#01391838



**Isabella Zelinger**

949.613.5916  
izelinger@cresa.com  
BRE#02120763



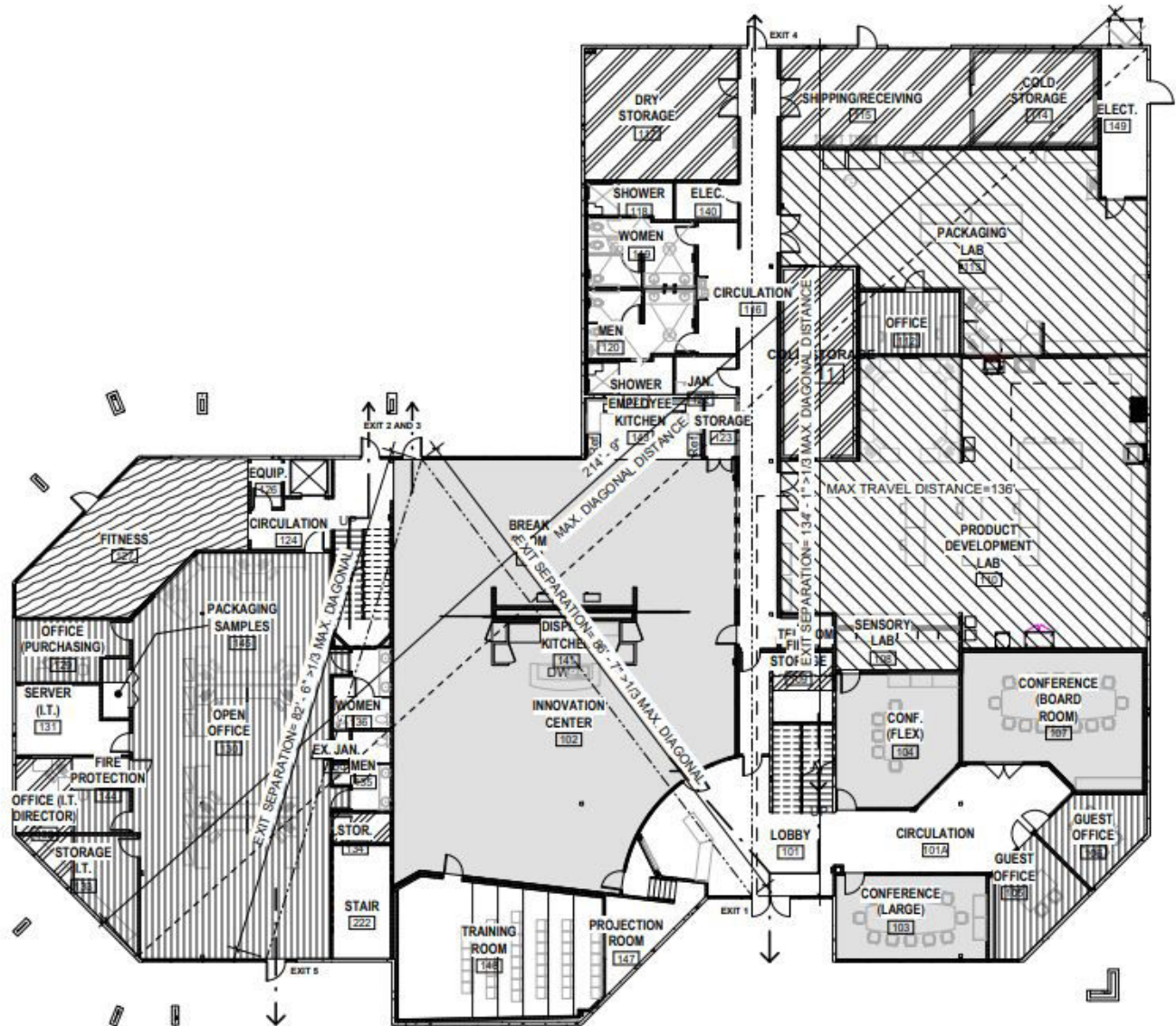
**Mark Bennett**

949.491.8615  
mbennett@cresa.com  
BRE#00869222



# 2811 Airpark Drive

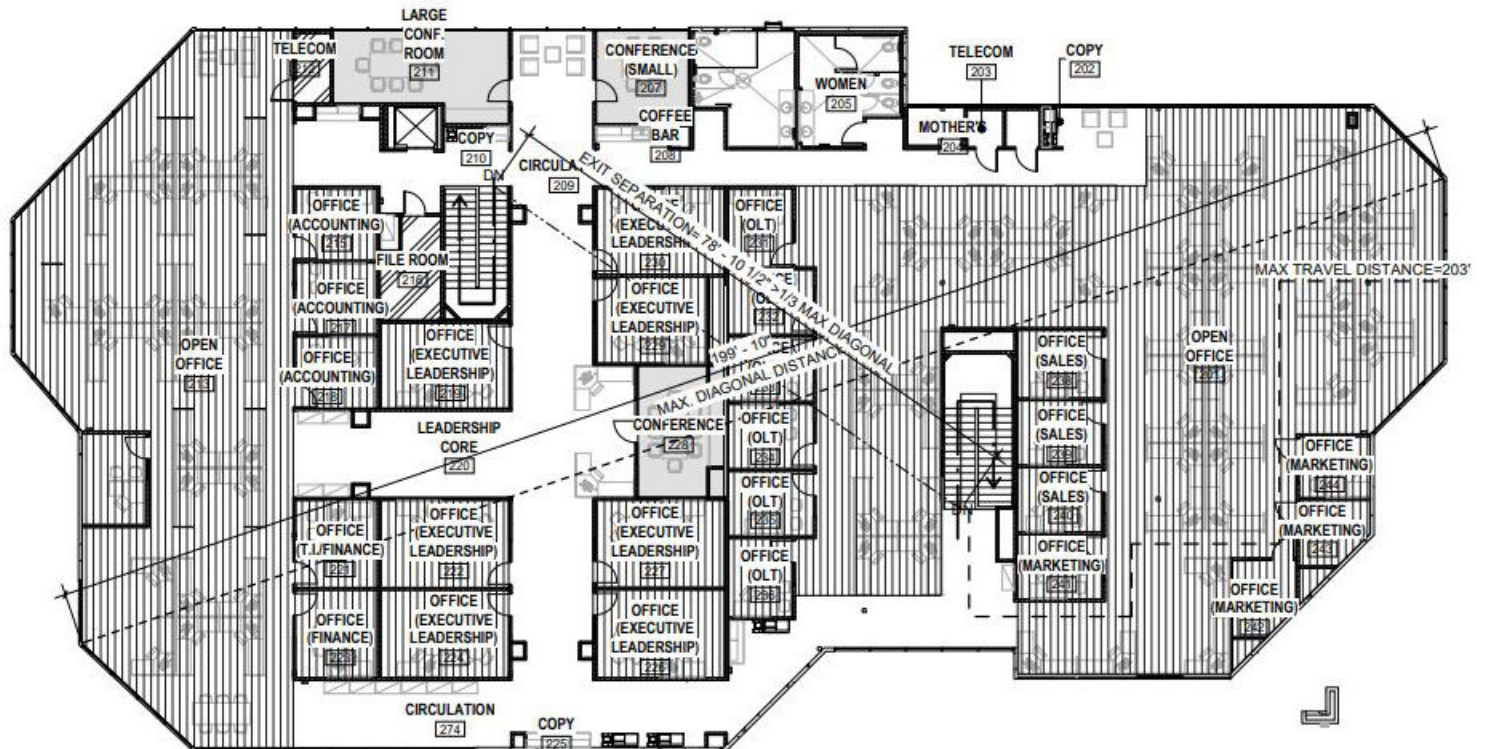
## 1st Floor





# 2811 Airpark Drive

## 2nd Floor





## 2811 Airpark Drive

Santa Maria, CA



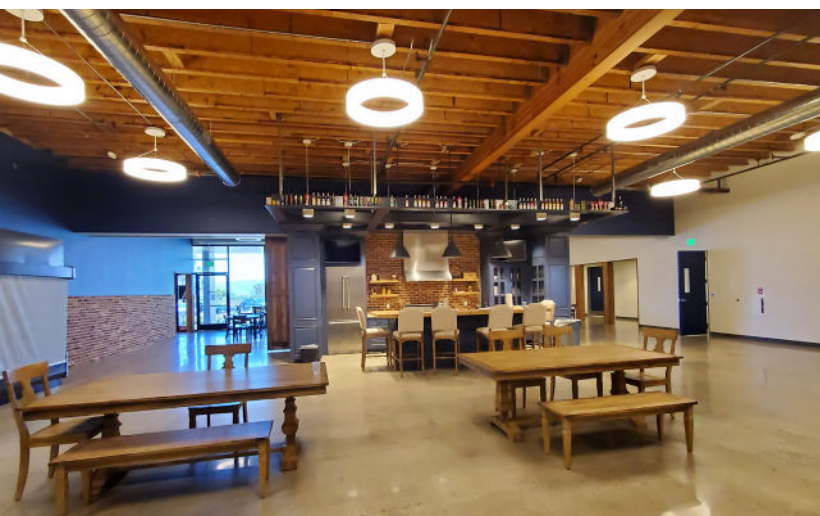
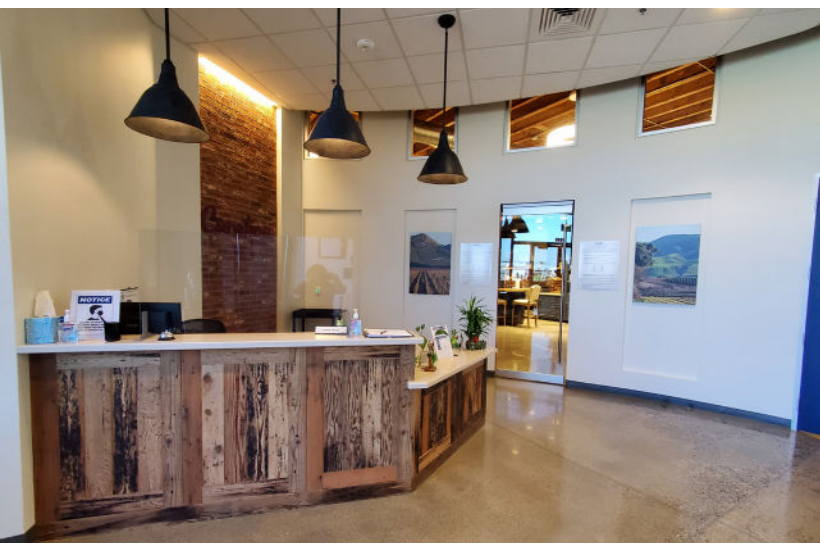
cresa

Cresa © 2021. All rights reserved. The information contained in this document has been obtained from sources believed reliable. While Cresa does not doubt its accuracy, Cresa has not verified it and makes no guarantee, warranty, or representation about it. It is your responsibility to independently confirm its accuracy and completeness. Any projections, opinions, assumptions or estimates used are for example only and do not represent the current or future performance of the property. The value of this transaction to you depends on tax and other factors which should be evaluated by your tax, financial and legal advisors. You and your advisors should conduct a careful, independent investigation of the property to determine to your satisfaction the suitability of the property for your needs.





## 2811 Airpark Drive Santa Maria, CA



cresa

Cresa © 2021. All rights reserved. The information contained in this document has been obtained from sources believed reliable. While Cresa does not doubt its accuracy, Cresa has not verified it and makes no guarantee, warranty, or representation about it. It is your responsibility to independently confirm its accuracy and completeness. Any projections, opinions, assumptions or estimates used are for example only and do not represent the current or future performance of the property. The value of this transaction to you depends on tax and other factors which should be evaluated by your tax, financial and legal advisors. You and your advisors should conduct a careful, independent investigation of the property to determine to your satisfaction the suitability of the property for your needs.