

# 2476 Lillie Ave

## SUMMERLAND, CA



**For Lease** | Retail/Office Building Near the Ocean | **1,060 SF**

*Experience. Integrity. Trust.*  
*Since 1993*

**Liam Murphy, CCIM**  
**805.898.4385**  
[liam@hayescommercial.com](mailto:liam@hayescommercial.com)  
lic. 01439777

**Rob Adams, CCIM**  
**805.898.4386**  
[rob@hayescommercial.com](mailto:rob@hayescommercial.com)  
lic. 01344315



## PROPERTY SUMMARY

This charming retail, personal service or flexible office space with sweeping coastal views on Summerland's main corridor is near high-end boutiques, wine tasting rooms, antique stores, spas and restaurants. Join the resurgence of Summerland with the likes of Field + Fort, Big Daddy, Porch, Botanik, The Well, The Sacred Space, Summerland Winery, Summerland Antique Collective, and local institution The Nugget. **Great visibility** and access from Highway 101, Montecito and Carpinteria, private wraparound patio, and **easy parking** in recently repaved lot make this a wonderful location to run your business.

<b>Size:</b>	1,060 SF
<b>Rental Rate:</b>	\$6,000/mo MGR
<b>Available:</b>	2/1/26
<b>Term:</b>	Negotiable
<b>Restroom:</b>	One private
<b>Zoning:</b>	C-1
<b>HVAC:</b>	Throughout
<b>Parking:</b>	Two private onsite spaces plus one ADA space
<b>Nearby Retailers:</b>	Home Crush, Field + Fort, Porch, The Nugget, Tinker Burger, Summerland Beach Café, Botanik
<b>To Show:</b>	Call listing agent

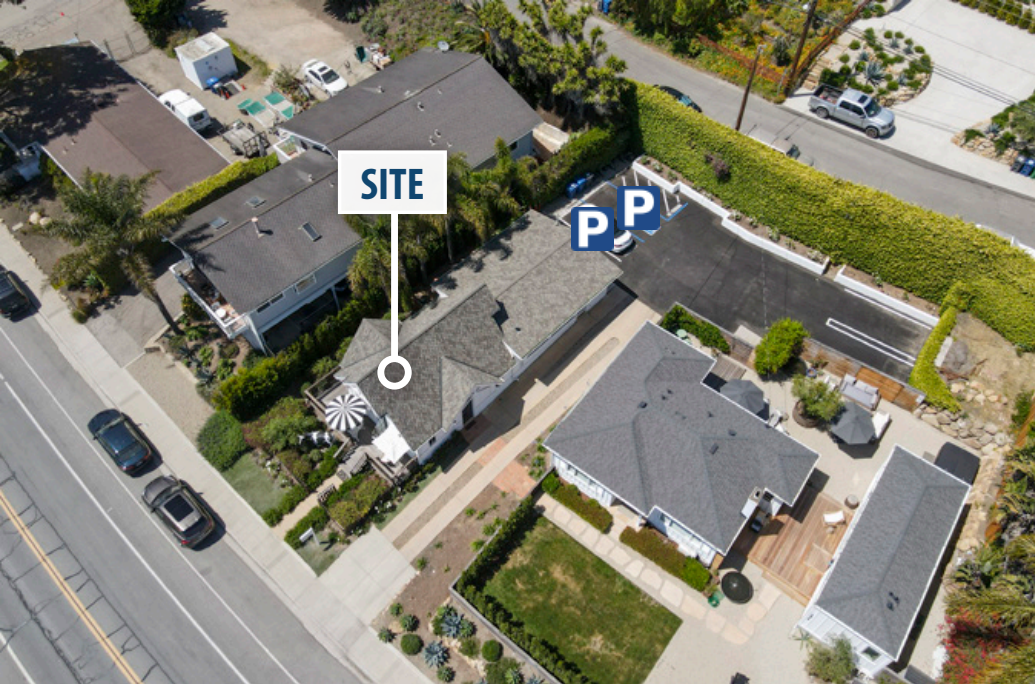


*Experience. Integrity. Trust.*  
Since 1993

**Liam Murphy, CCIM**  
805.898.4385  
[liam@hayescommercial.com](mailto:liam@hayescommercial.com)  
lic. 01439777

**Rob Adams, CCIM**  
805.898.4386  
[rob@hayescommercial.com](mailto:rob@hayescommercial.com)  
lic. 01344315

 **Hayes**  
COMMERCIAL GROUP



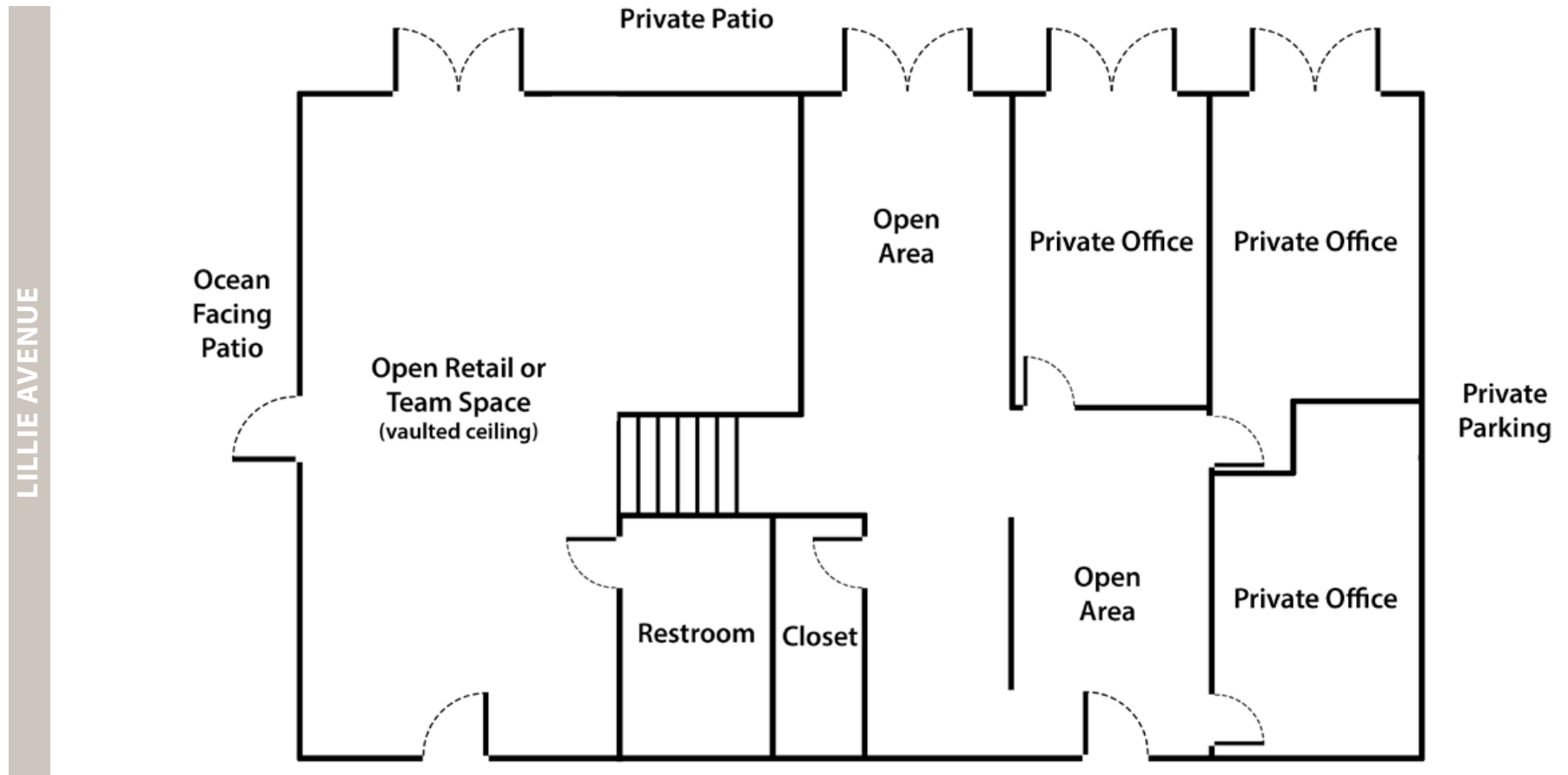
*Experience. Integrity. Trust.*  
Since 1993

**Liam Murphy, CCIM**  
805.898.4385  
[liam@hayescommercial.com](mailto:liam@hayescommercial.com)  
lic. 01439777

**Rob Adams, CCIM**  
805.898.4386  
[rob@hayescommercial.com](mailto:rob@hayescommercial.com)  
lic. 01344315

 **Hayes**  
COMMERCIAL GROUP

## FLOOR PLAN



*Not to scale.*

*Experience. Integrity. Trust.  
Since 1993*

**Liam Murphy, CCIM**  
805.898.4385  
[liam@hayescommercial.com](mailto:liam@hayescommercial.com)  
lic. 01439777

**Rob Adams, CCIM**  
805.898.4386  
[rob@hayescommercial.com](mailto:rob@hayescommercial.com)  
lic. 01344315





AREA OVERVIEW

SITE

US  
101

Lillie Ave

Experience. Integrity. Trust.  
Since 1993

**Liam Murphy, CCIM**  
805.898.4385  
[liam@hayescommercial.com](mailto:liam@hayescommercial.com)  
lic. 01439777

**Rob Adams, CCIM**  
805.898.4386  
[rob@hayescommercial.com](mailto:rob@hayescommercial.com)  
lic. 01344315

 **Hayes**  
COMMERCIAL GROUP

# SUMMERLAND



33,308

Population  
in 5 miles



\$191,979

avg. house-  
hold income



Summerland is a quaint seaside hamlet embodying a vibe of relaxed sophistication. Nestled on a gently sloping hillside between Santa Barbara and Carpinteria, Summerland's population of just 1,500 hosts a widely renowned destination for antiques, boutiques, cafes, and coastal recreation. Residents of neighboring Montecito—one of the nation's wealthiest enclaves—routinely hop to Summerland for a meal, wine tasting, spa treatment, or browsing for home furnishings.



*Experience. Integrity. Trust.*  
*Since 1993*

**Liam Murphy, CCIM**  
**805.898.4385**  
[liam@hayescommercial.com](mailto:liam@hayescommercial.com)  
lic. 01439777

**Rob Adams, CCIM**  
**805.898.4386**  
[rob@hayescommercial.com](mailto:rob@hayescommercial.com)  
lic. 01344315

