

# 1616 Chapala St

SANTA BARBARA, CA

RATE REDUCED



**For Lease** | Second-Floor Office Suite Near State Street | 486 SF

*Experience. Integrity. Trust.*  
Since 1993

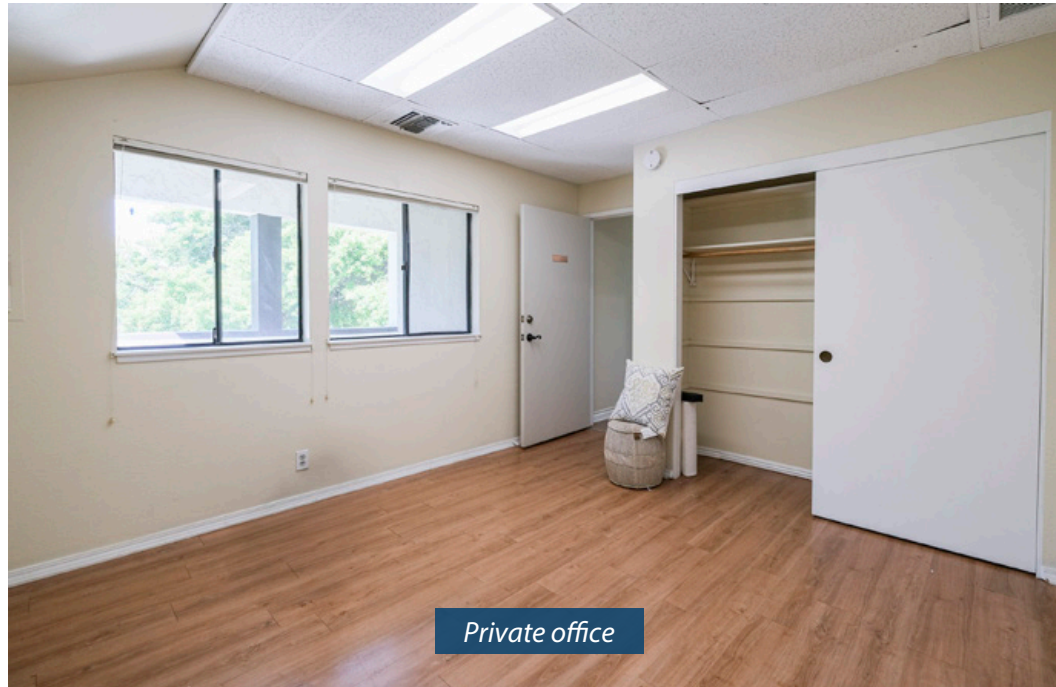
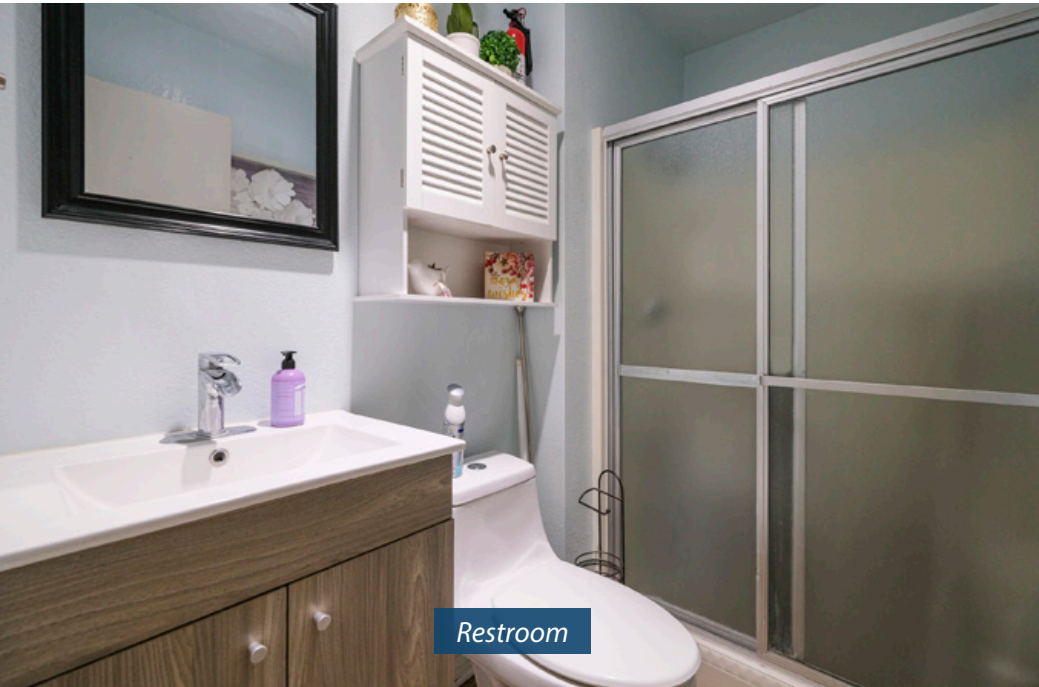
**Dan Ferrick**  
805.898.4371  
[dferrick@hayescommercial.com](mailto:dferrick@hayescommercial.com)  
lic. 01936711



## PROPERTY SUMMARY

Second-floor office space conveniently located in downtown Santa Barbara and near State Street and Hwy 101, with on-site parking. This efficient suite features two rooms (one with a kitchenette) and a private restroom with a shower. Large operable windows throughout help to create an open feel and maximize natural light.

<b>Suite</b>	2	<b>Kitchenette</b>	Yes
<b>Size</b>	486 SF	<b>Parking</b>	One space
<b>Rate</b>	\$1,750 MGR	<b>HVAC</b>	Yes
<b>Floor</b>	Second	<b>Restrooms</b>	One, with shower
<b>Term</b>	3-5 years	<b>To Show</b>	Call listing agent
<b>Available</b>	Immediately		

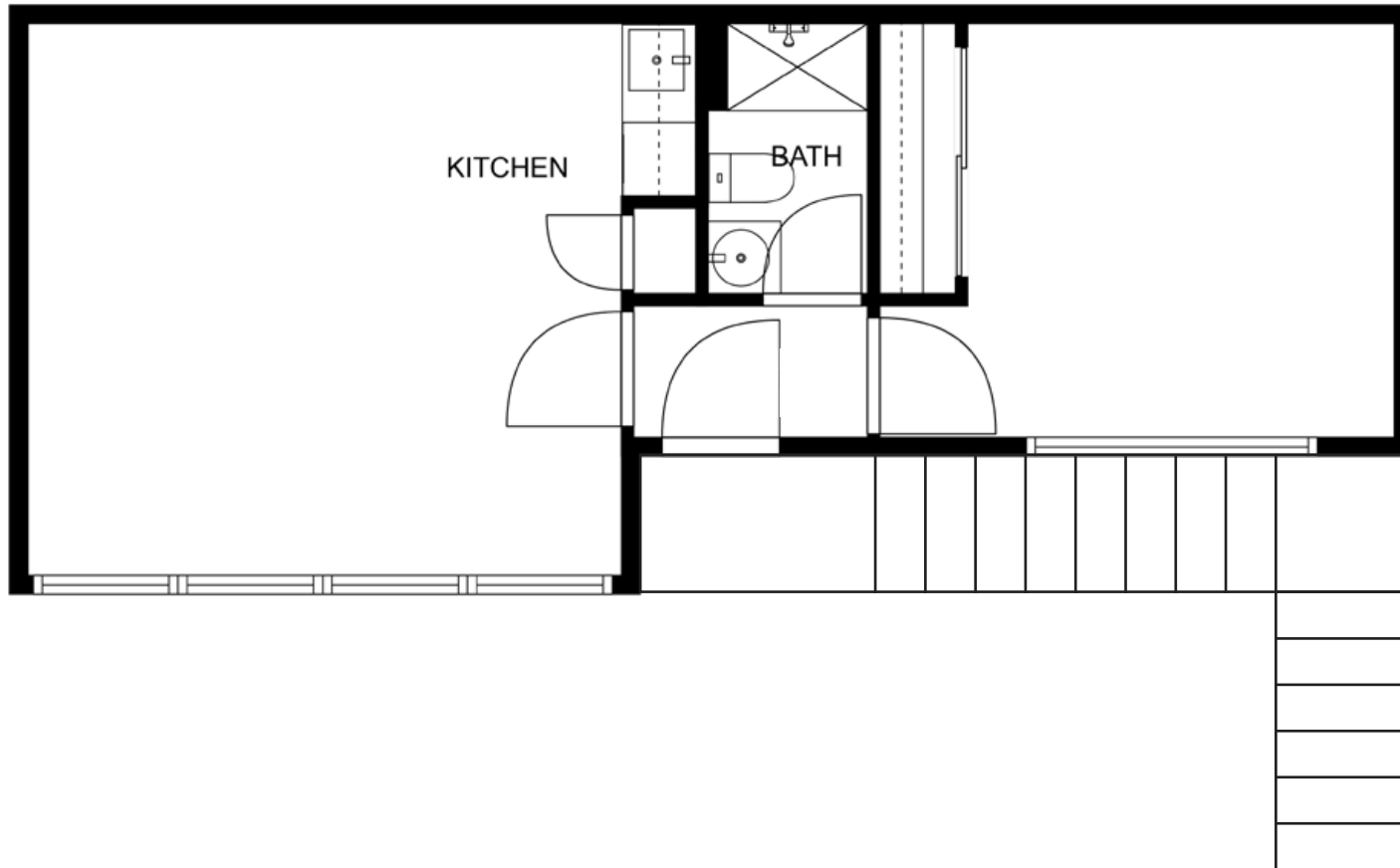


*Experience. Integrity. Trust.*  
Since 1993

**Dan Ferrick**  
805.898.4371  
[dferrick@hayescommercial.com](mailto:dferrick@hayescommercial.com)  
lic. 01936711

 **Hayes**  
COMMERCIAL GROUP

# FLOOR PLAN



*Experience. Integrity. Trust.*  
*Since 1993*

**Dan Ferrick**  
805.898.4371  
[dferrick@hayescommercial.com](mailto:dferrick@hayescommercial.com)  
lic. 01936711



# AREA OVERVIEW



Experience. Integrity. Trust.  
Since 1993

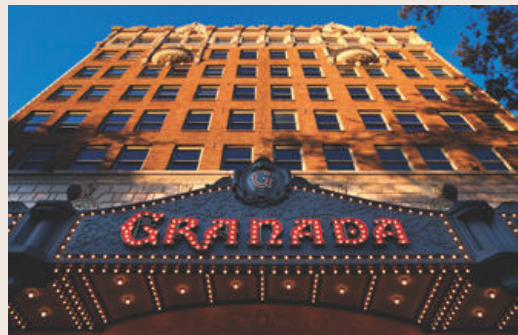
Dan Ferrick  
805.898.4371  
dferrick@hayescommercial.com  
lic. 01936711





# STATE STREET

Santa Barbara's retail heart



At the heart of Santa Barbara lies State Street, dense with countless options for food and drink, shopping, and entertainment. Stretching the entire length of downtown and eventually turning into Stearns Wharf, State Street serves as the retail hub and most sought-after tourist attraction in the city. Up and down State Street, food & drink hotspots continue to thrive while new retailers join the scene, pulling in locals and tourists alike.



**'Walker's Paradise'**

WALKSCORE

96

Daily errands do not require a car



FOOT TRAFFIC  
(pedestrians per day)

12,000



AUTO TRAFFIC  
(at Carrillo St and State St)

11,854 CPD



**'Biker's Paradise'**

BIKESCORE

99

Daily errands can be done on a bike



AREA POPULATION  
(3 mi radius)

89,878



MEDIAN HOUSEHOLD INCOME  
(3 mi radius)

\$153,787

Source: esri. 2023 demographics centered on 900 block of State Street.

Experience. Integrity. Trust.  
Since 1993

Dan Ferrick  
805.898.4371  
dferrick@hayescommercial.com  
lic. 01936711

