

111 W Micheltorena St
SANTA BARBARA, CA



For Lease | Downtown Office Space | 1,722 - 5,430 SF

Experience. Integrity. Trust.
Since 1993

Caitlin Hensel
805.898.4374
caitlin@hayescommercial.com
lic. 01893341

Kristopher Roth
805.898.4361
kris@hayescommercial.com
lic. 01482732





PROPERTY SUMMARY

Abundant windows and patios allow plenty of natural light into these bright and airy spaces overlooking a large courtyard with peaceful water feature. **Suite 200** offers a large conference room, full kitchen, private remodeled restroom, dual access and private patio. **Suite 210** offers a blend of open and private work spaces, while **Suite 220** features an efficient layout of private offices. **Suite 300-A** provides a good mix of open work space and private offices, with a large conference room and private patio access. Across the street from local favorite lunch spot Three Pickles Deli and near the Public Market and vibrant Theater District.

Project Name: The Alanmar Building

<u>Suite</u>	<u>Size</u>	<u>Floor</u>	<u>Parking</u>
200	3,708 SF	2nd	10 spaces
210	3,911 SF	2nd	9 spaces
220	1,722 SF	2nd	5 spaces
300-A	3,376 SF	3rd	7 spaces

**Suite 200 & Suite 220 may be combined for a total of 5,430 SF*

Rate: \$2.35 NNN (.95)
Utilities: \$0.40 psf
Term: 3-5 years
Available: Now
Zoning: C-G
HVAC: Throughout
Restrooms: Yes, common
Elevator: Yes
To Show: Call listing agent

Experience. Integrity. Trust.
Since 1993

Caitlin Hensel
805.898.4374
caitlin@hayescommercial.com
 lic. 01893341

Kristopher Roth
805.898.4361
kris@hayescommercial.com
 lic. 01482732

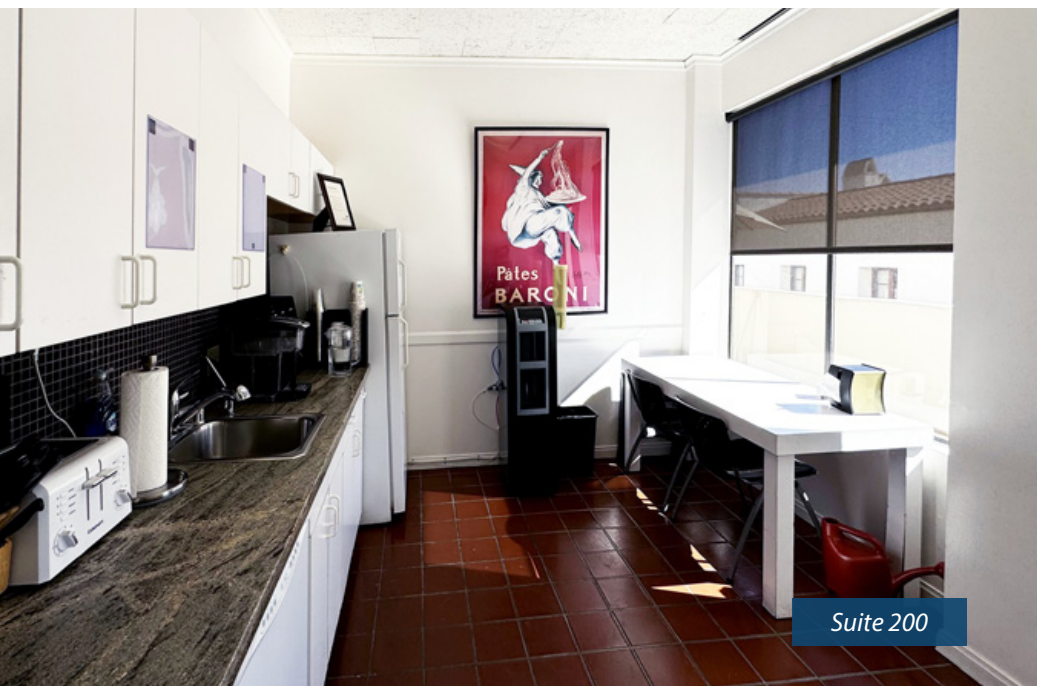




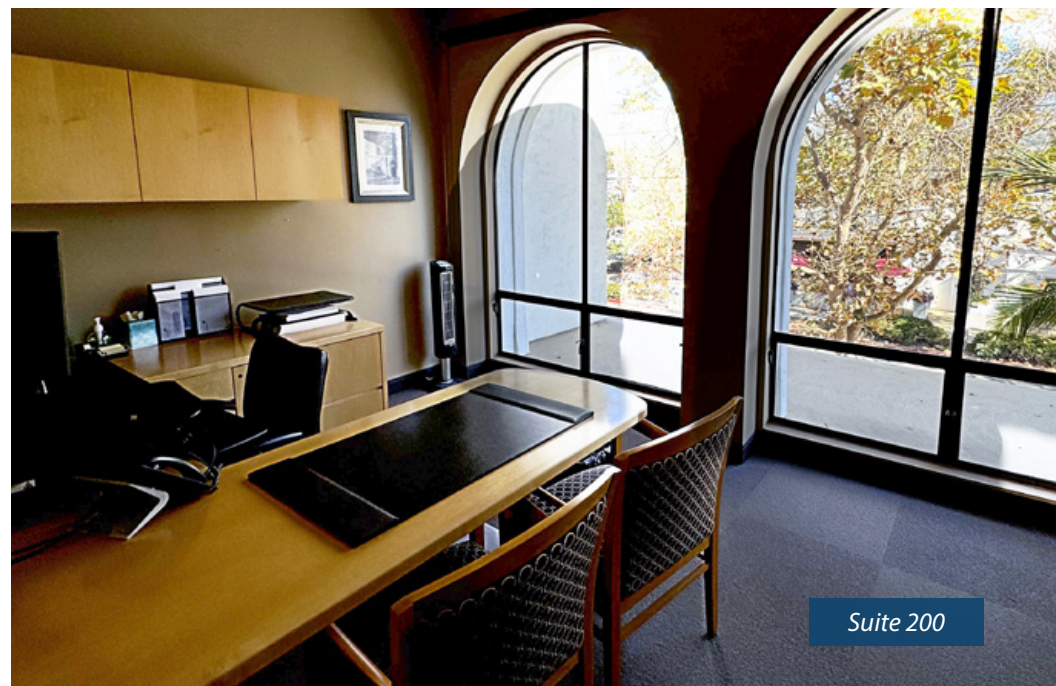
Suite 200



Suite 200



Suite 200



Suite 200

Experience. Integrity. Trust.
Since 1993

Caitlin Hensel
805.898.4374
caitlin@hayescommercial.com
lic. 01893341

Kristopher Roth
805.898.4361
kris@hayescommercial.com
lic. 01482732

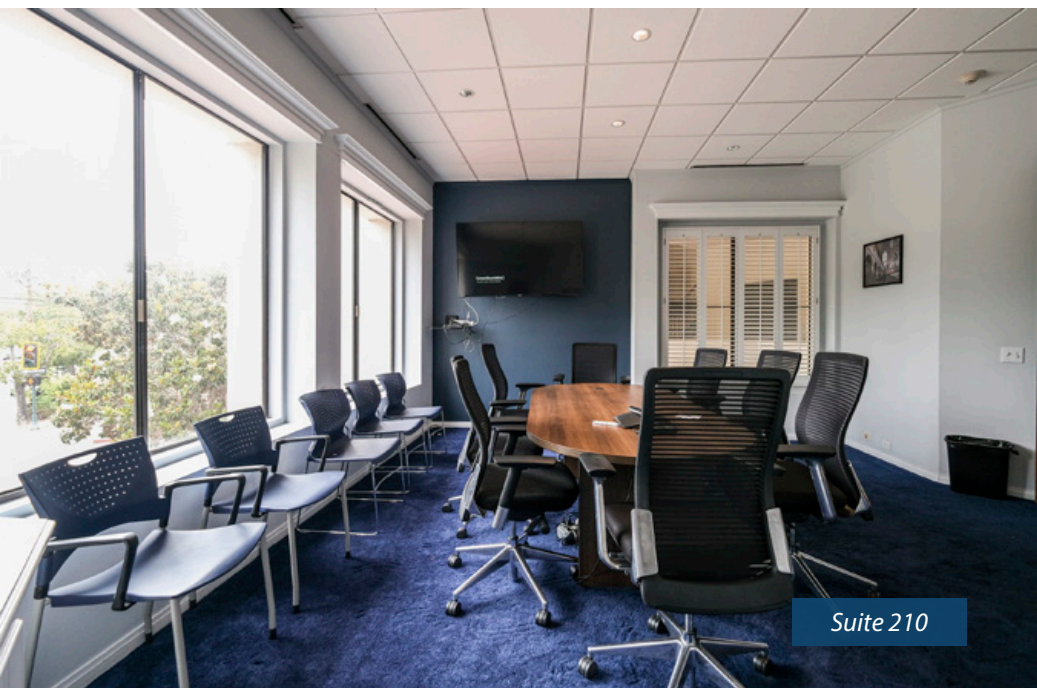
 **Hayes**
COMMERCIAL GROUP



Suite 210



Suite 210



Suite 210



Suite 210

Experience. Integrity. Trust.
Since 1993

Caitlin Hensel
805.898.4374
caitlin@hayescommercial.com
lic. 01893341

Kristopher Roth
805.898.4361
kris@hayescommercial.com
lic. 01482732

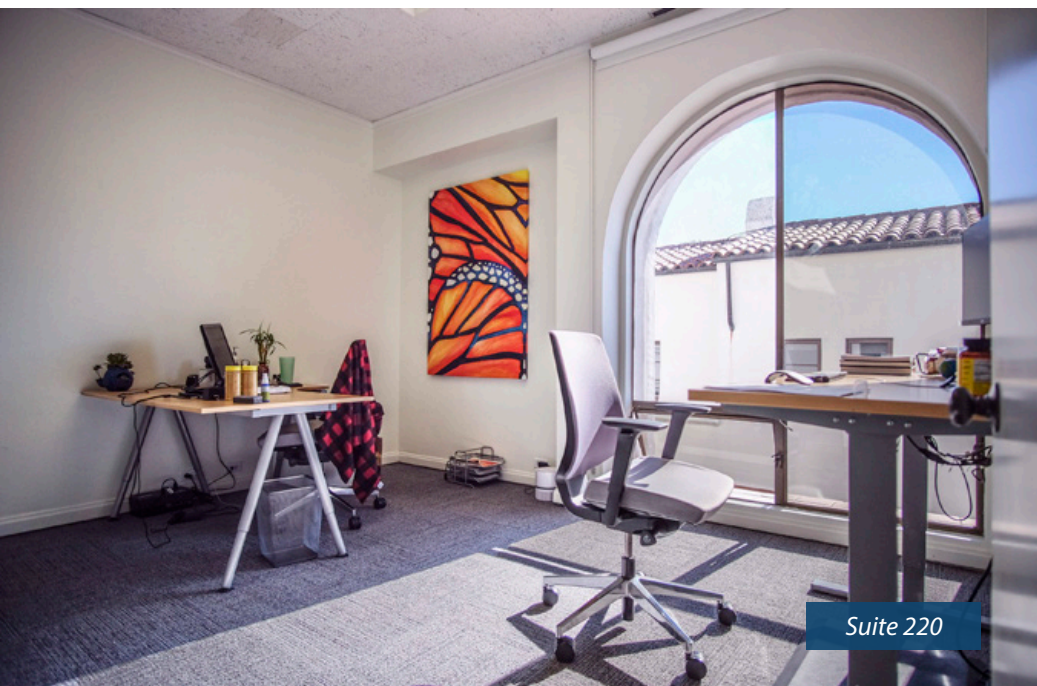
 **Hayes**
COMMERCIAL GROUP



Suite 220



Suite 220



Suite 220



Suite 220

Experience. Integrity. Trust.
Since 1993

Caitlin Hensel
805.898.4374
caitlin@hayescommercial.com
lic. 01893341

Kristopher Roth
805.898.4361
kris@hayescommercial.com
lic. 01482732

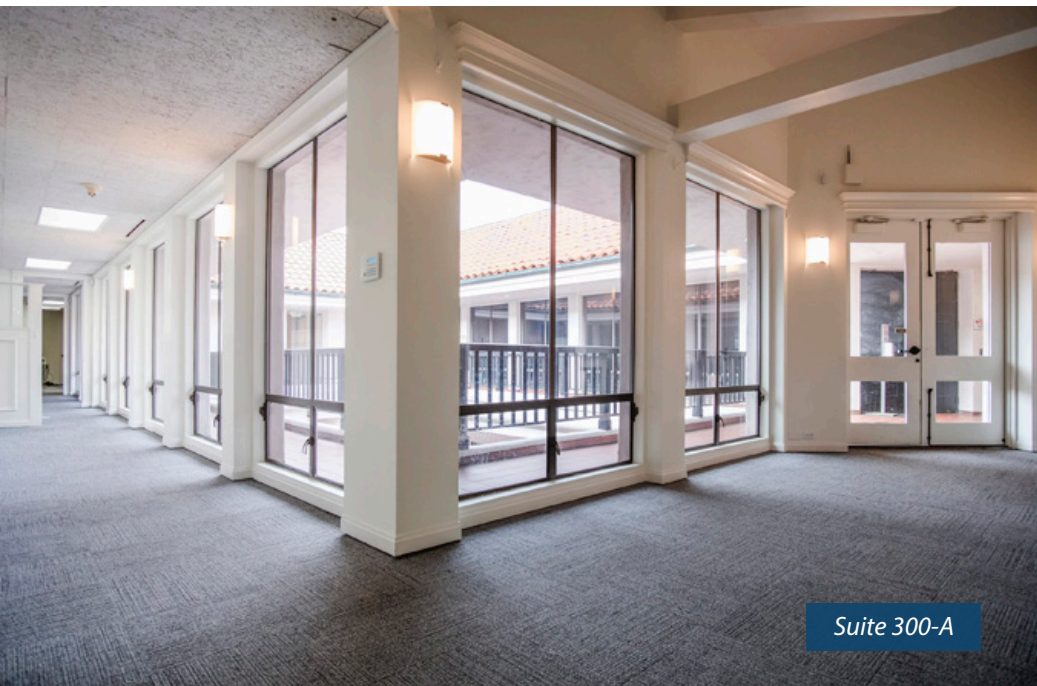
 **Hayes**
COMMERCIAL GROUP



Suite 300-A



Suite 300-A



Suite 300-A



Common courtyard

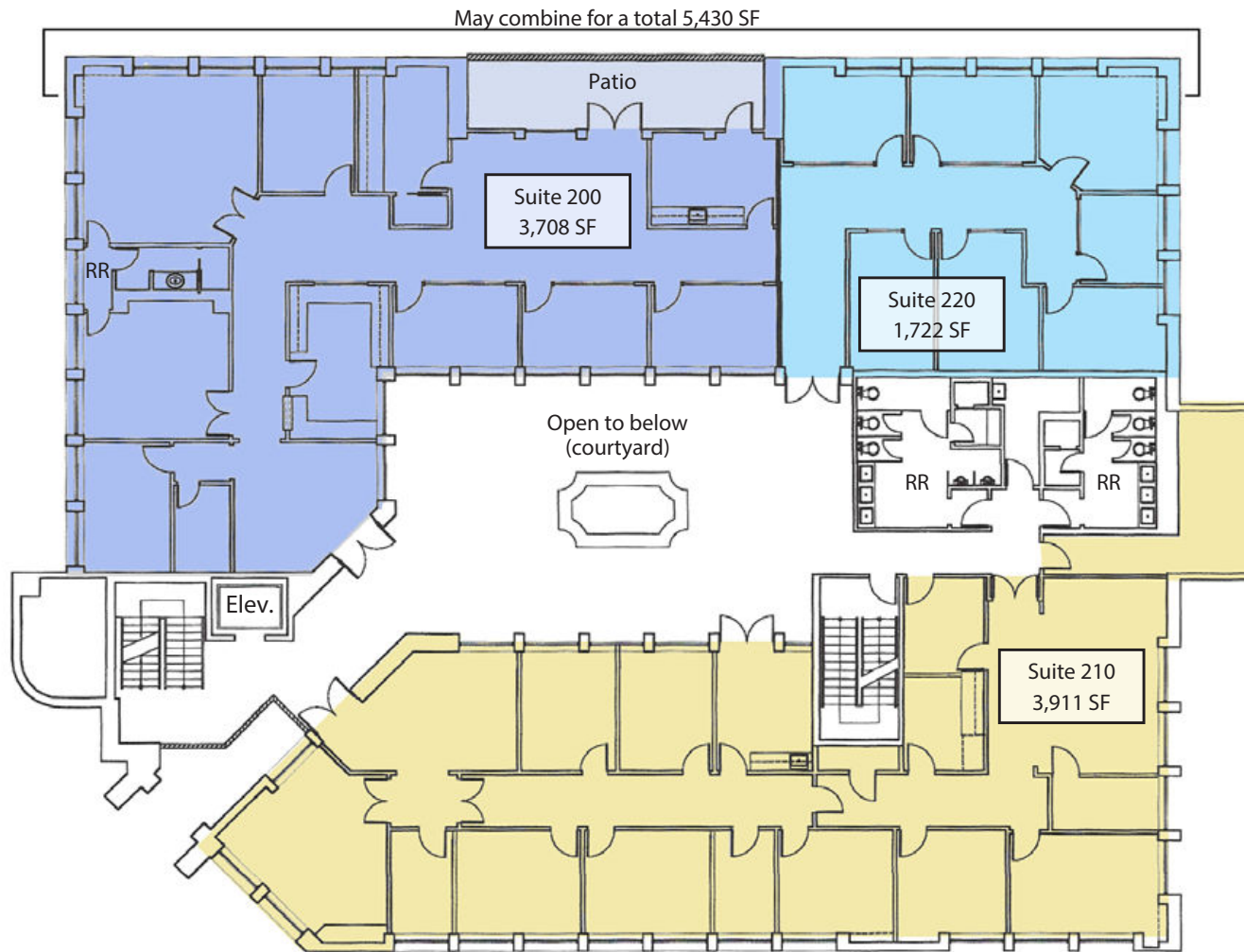
Experience. Integrity. Trust.
Since 1993

Caitlin Hensel
805.898.4374
caitlin@hayescommercial.com
lic. 01893341

Kristopher Roth
805.898.4361
kris@hayescommercial.com
lic. 01482732

 **Hayes**
COMMERCIAL GROUP

SECOND FLOOR PLAN



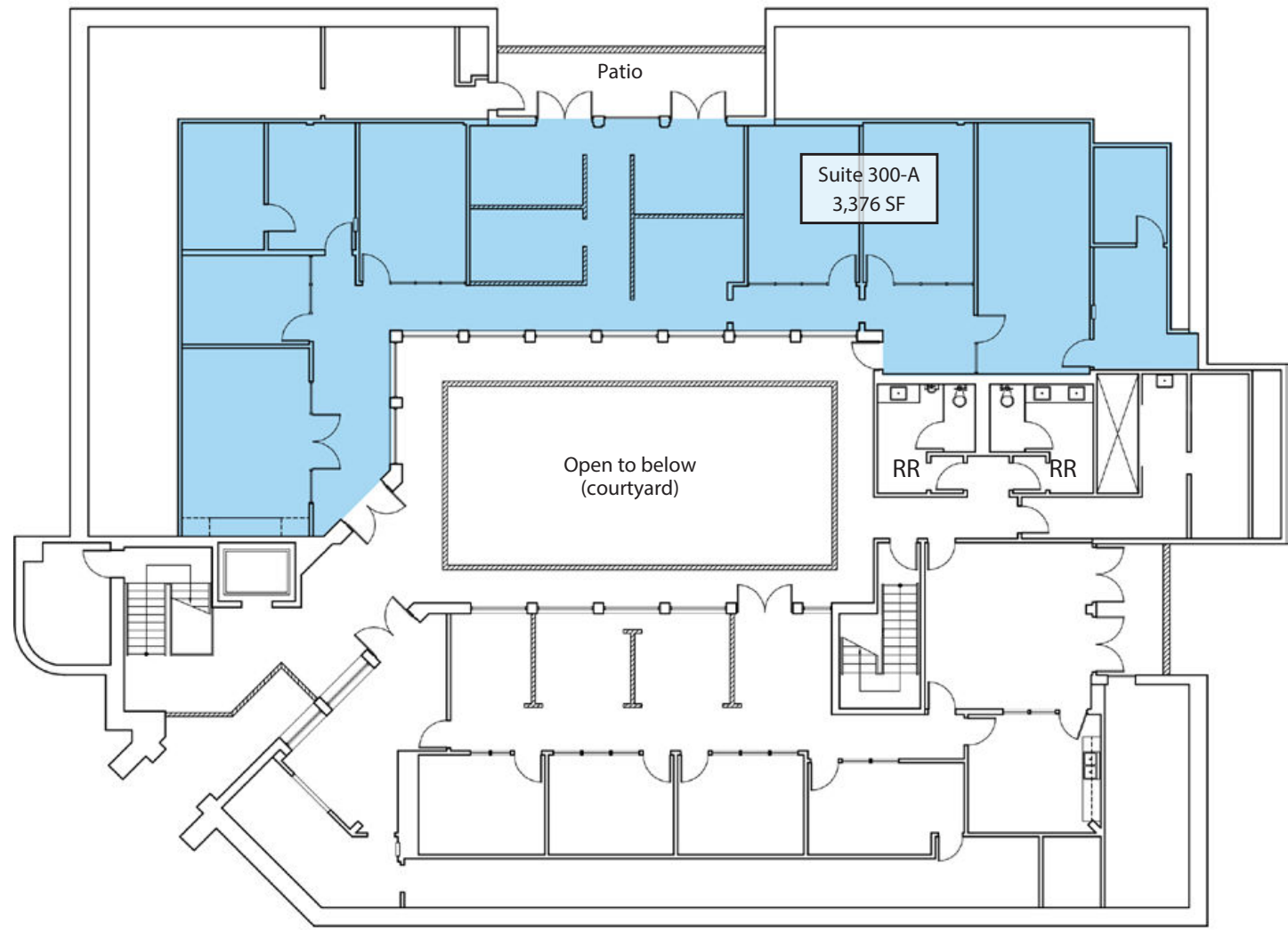
Experience. Integrity. Trust.
Since 1993

Caitlin Hensel
805.898.4374
caitlin@hayescommercial.com
lic. 01893341

Kristopher Roth
805.898.4361
kris@hayescommercial.com
lic. 01482732



THIRD FLOOR PLAN



Experience. Integrity. Trust.
Since 1993

Caitlin Hensel
805.898.4374
caitlin@hayescommercial.com
lic. 01893341

Kristopher Roth
805.898.4361
kris@hayescommercial.com
lic. 01482732





Experience. Integrity. Trust.
Since 1993

Caitlin Hensel
805.898.4374
caitlin@hayescommercial.com
lic. 01893341

Kristopher Roth
805.898.4361
kris@hayescommercial.com
lic. 01482732

