

Mountain and ocean views



FOR LEASE



THE JULIA

924 Anacapa St  
Santa Barbara

Offices in Landmark Building

**Kristopher Roth**

**805.898.4361**

kris@hayescommercial.com  
lic. 01482732

**Caitlin Hensel**

**805.898.4374**

caitlin@hayescommercial.com  
lic. 01893341



222 E. Carrillo Street, Suite 101, Santa Barbara, California 93101 | HayesCommercial.com

The information contained herein has been obtained from the owner of the property or from other sources deemed reliable. We have no reason to doubt its accuracy, but we do not guarantee it.

3/8/24



## THE JULIA

924 Anacapa St, Santa Barbara

For Lease | Office

# OFFERING SUMMARY

*Office suites available  
in landmark building in  
downtown Santa Barbara*

This historic office building, originally designed by Julia Morgan (famed architect of the Hearst Castle), features five floors of charming office space, some with patios and all with views ranging from downtown Santa Barbara, the Riviera or the Ocean. Ideally located near the countless amenities offered by the State Street corridor, the Financial District, and the Arts & Entertainment District.

**Size** Various

**Rate** \$2.65 - \$3.15 NNN

**NNN** \$0.95 psf (including utilities)

**Term** Flexible

**Parking** Multiple city and private lots nearby

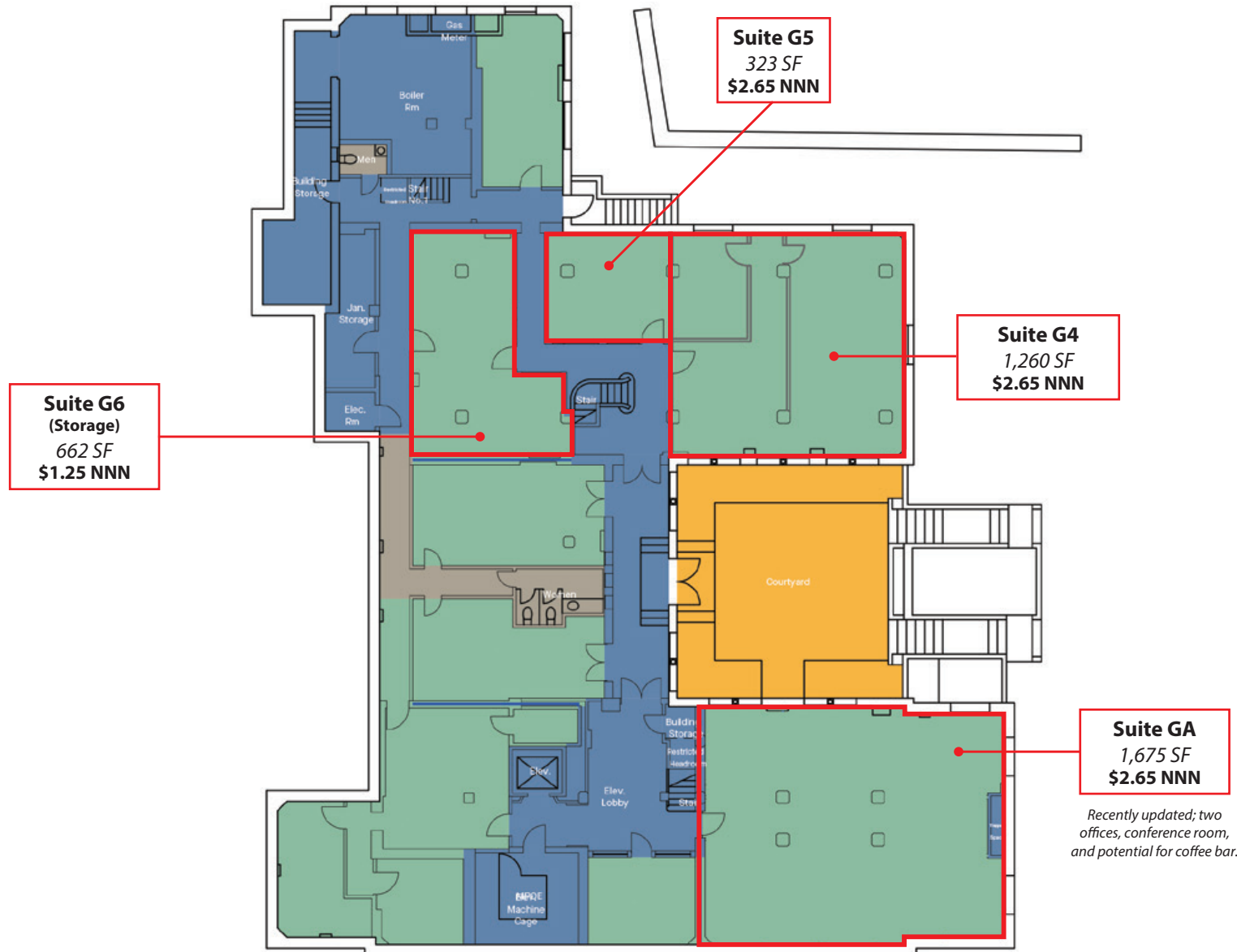
**Elevator** Yes, serving all floors

# THE JULIA

924 Anacapa St, Santa Barbara

For Lease | Office

# GARDEN LEVEL





# THE JULIA

924 Anacapa St, Santa Barbara

For Lease | Office

# FIRST FLOOR

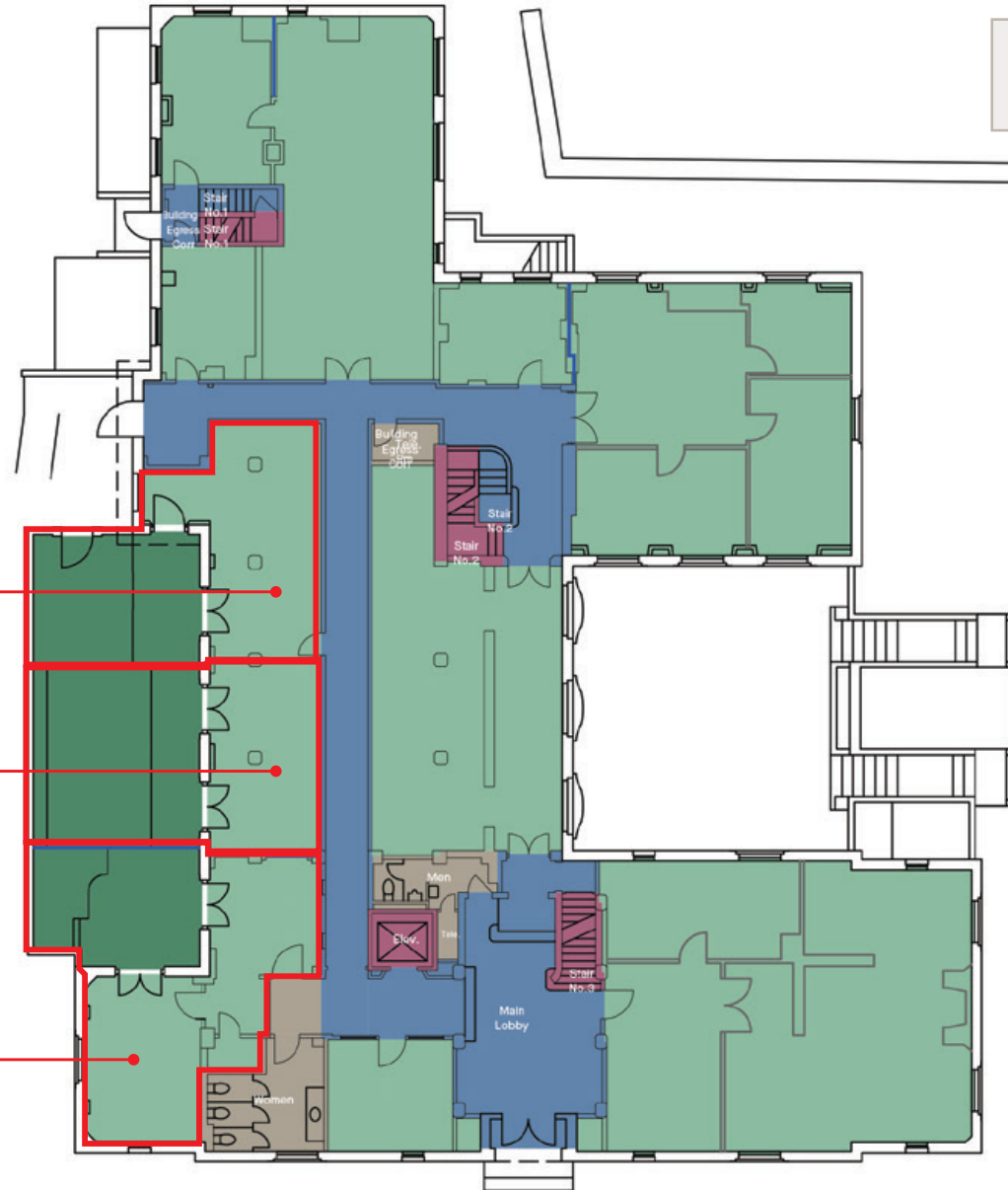
All suites are  
**\$3.15 NNN**

**Suite 1B1, 1B2, 1B3**  
Available together for  
a total of  
1,469 SF  
with 1,160 SF patio

**Suite 1B1**  
487 SF  
with 356 SF patio

**Suite 1B2**  
356 SF  
with 493 SF patio

**Suite 1B3**  
626 SF  
with 311 SF patio

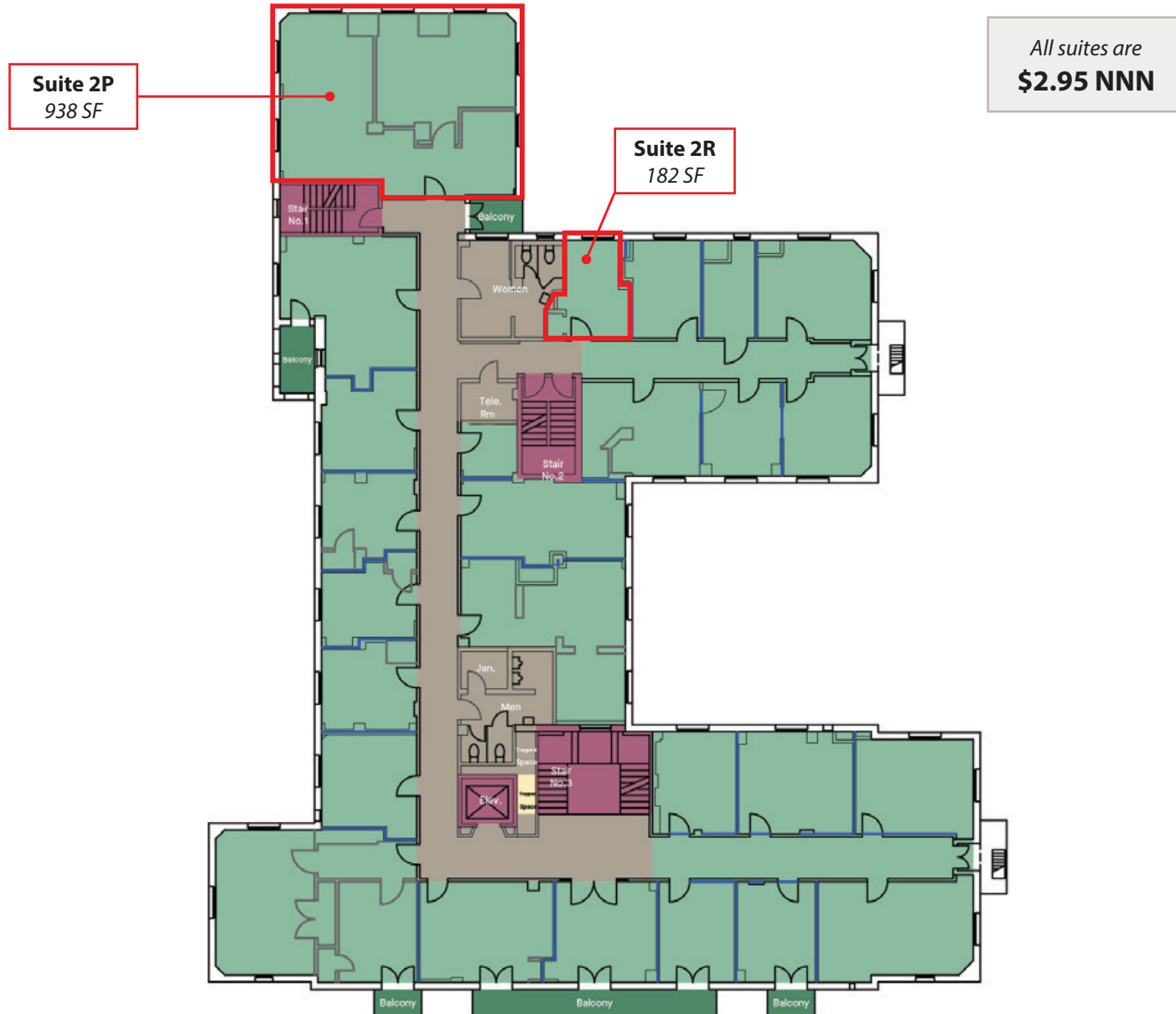


# THE JULIA

924 Anacapa St, Santa Barbara

For Lease | Office

# SECOND FLOOR

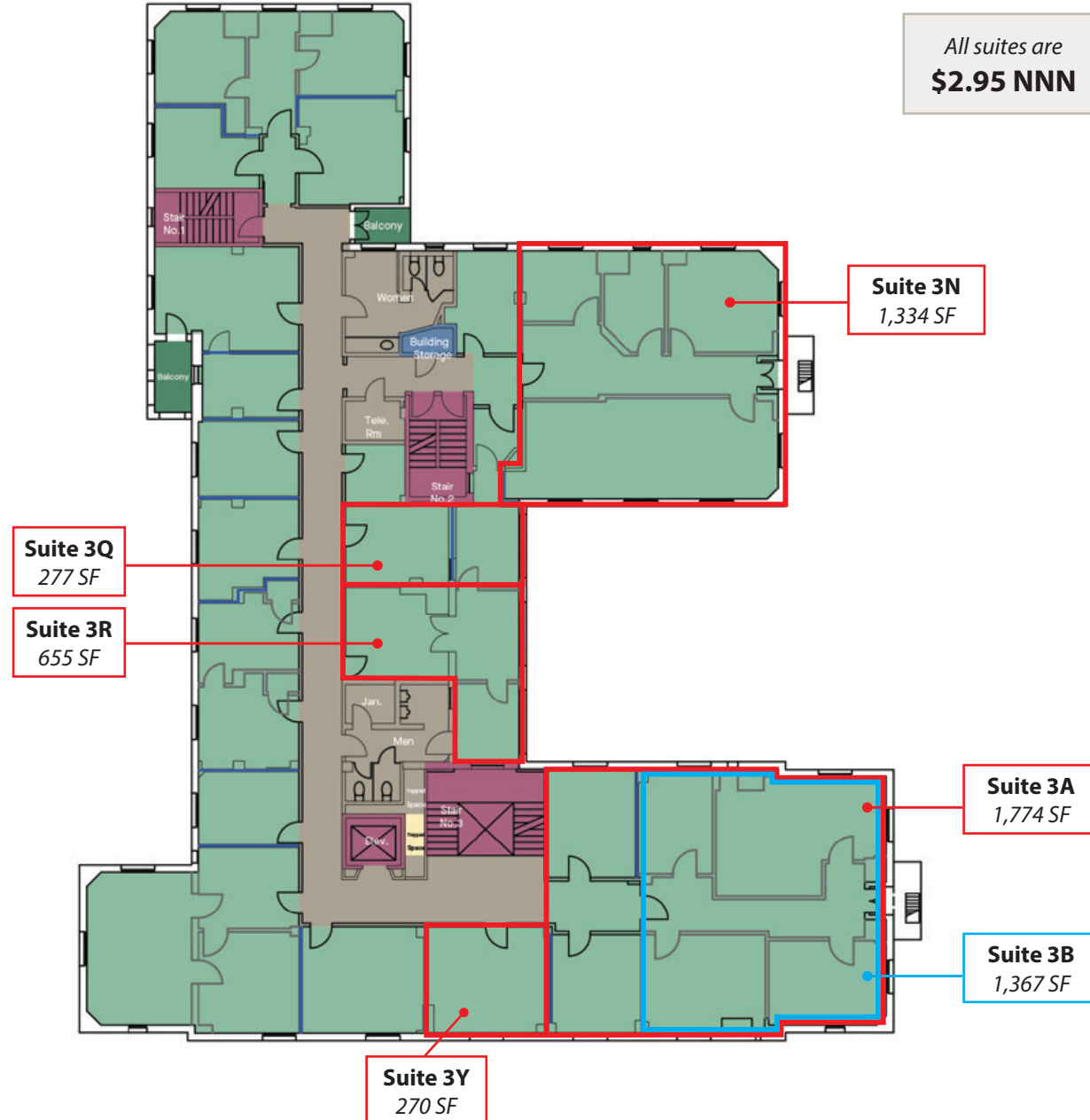


# THE JULIA

924 Anacapa St, Santa Barbara

For Lease | Office

# THIRD FLOOR



**For Lease | Office**

**Entire Fourth Floor**  
Available for a total of **7,503 SF**

**All suites are \$3.15 NNN**

Suite	Size (SF)
Suite 4L	876
Suite 4H	357
Suite 4G	294
Suite 4F	355
Suite 4E	189
Suite 4D	899
Suite 4C	269
Suite 4B	222
Suite 4K1	123
Suite 4M	273
Suite 4N	386
Suite 4J	878
Suite 4JK	1,602
Suite 4A	1,777



## THE JULIA

924 Anacapa St, Santa Barbara

For Lease | Office

# NEIGHBORHOOD





For additional information, contact:

**Caitlin Hensel**

**805.898.4374**

[caitlin@hayescommercial.com](mailto:caitlin@hayescommercial.com)

lic. 01893341

**Kristopher Roth**

**805.898.4361**

[kris@hayescommercial.com](mailto:kris@hayescommercial.com)

lic. 01482732



© 2024 Hayes Commercial Group

