

For Sublease

2811 Airpark Drive Office/Flex/Lab Space

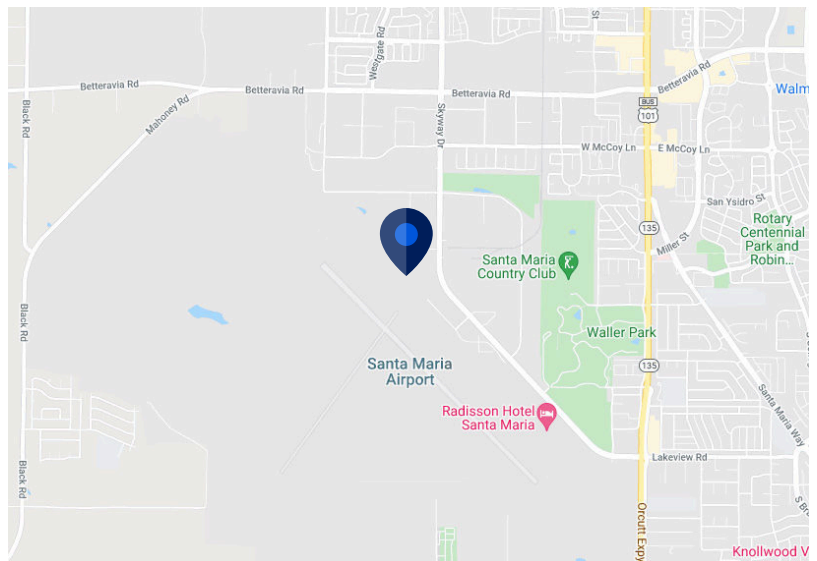
Santa Maria, CA

Space Profiles:

Sublease	2nd Floor or Entire Building
RSF	2,100-36,300 SF
Option 1	1st Floor - 5,300-18,150 SF
Option 2	2nd Floor - 2,100-18,150 SF
Rental Rate	\$1.50 NNN
OpEx	TBD
Term	12/31/29 (negotiable)
Furniture	Plug and Play

Notes

Amenities: Shared Theatre + Training Room
Lab Space: Product Development lab, Packaging Development Lab, Walk-in Refrigerators, Sensory Lab Station, Innovation Kitchen. Lab equipment negotiable
Roll Up Door



Contact:



Michael Martz

805.898.4363
michael@hayescommercial.com
BRE#01391838



Isabella Zelinger

949.613.5916
izelinger@cresa.com
BRE#02120763



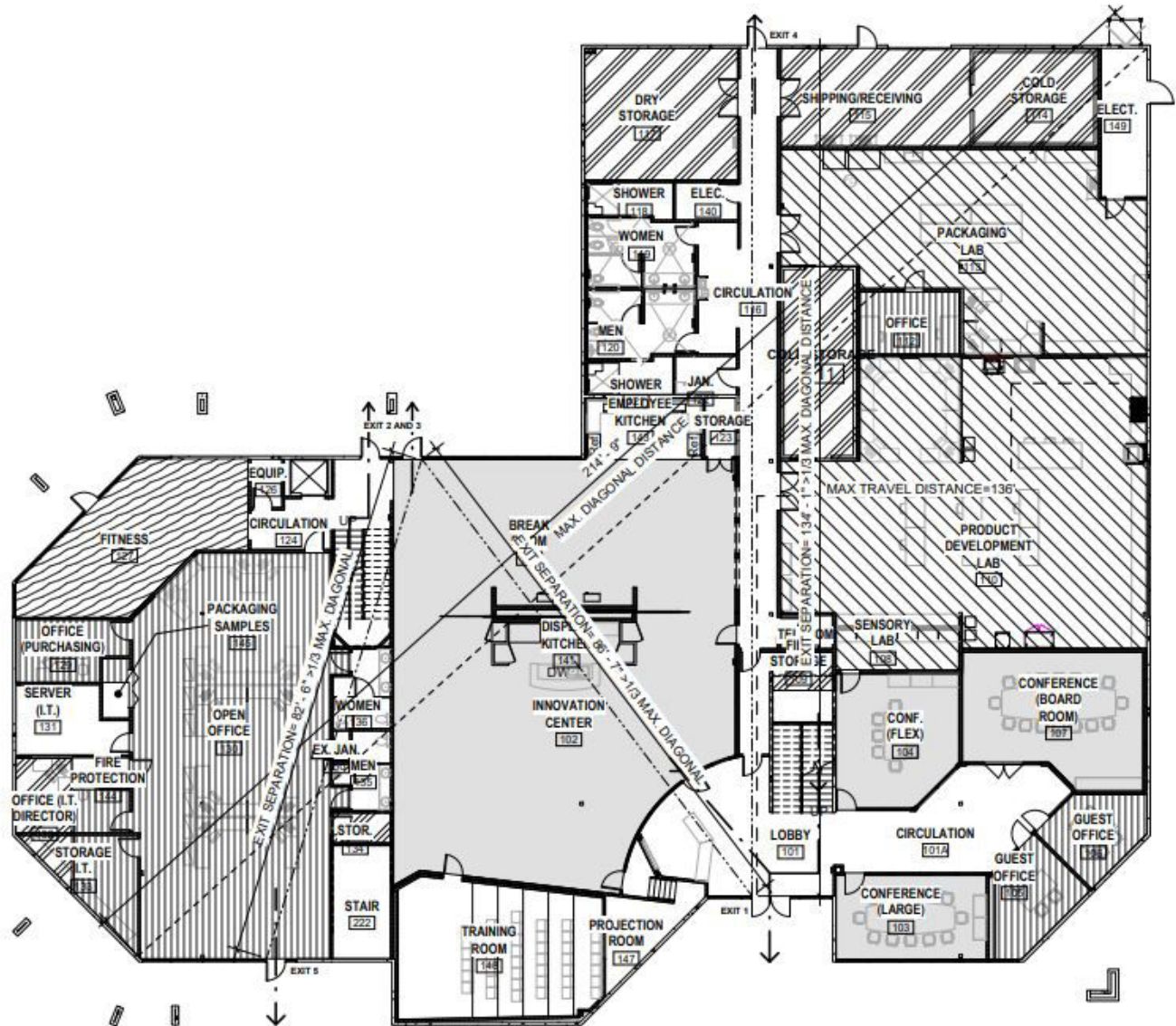
Mark Bennett

949.491.8615
mbennett@cresa.com
BRE#00869222



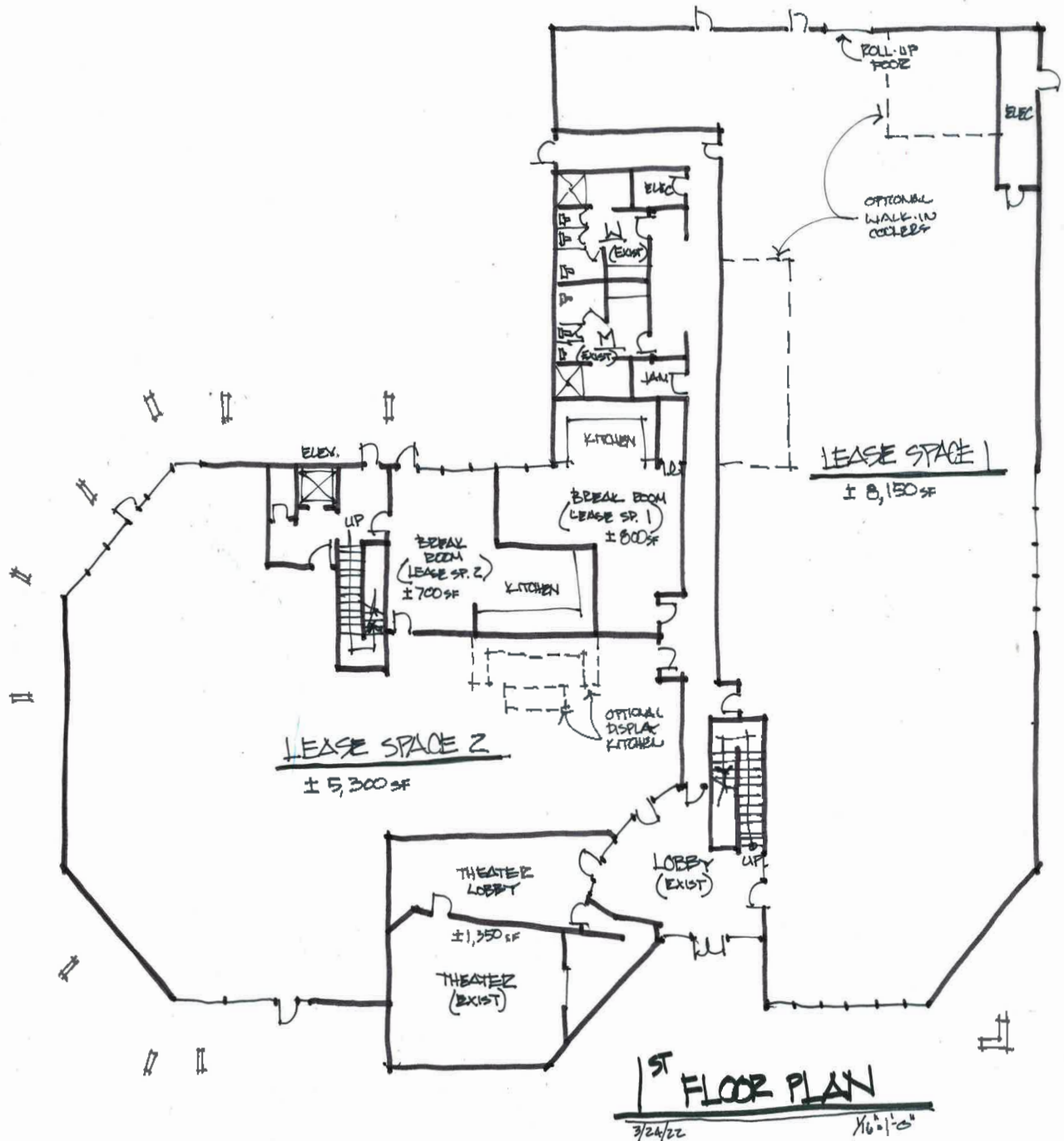
2811 Airpark Drive

1st Floor



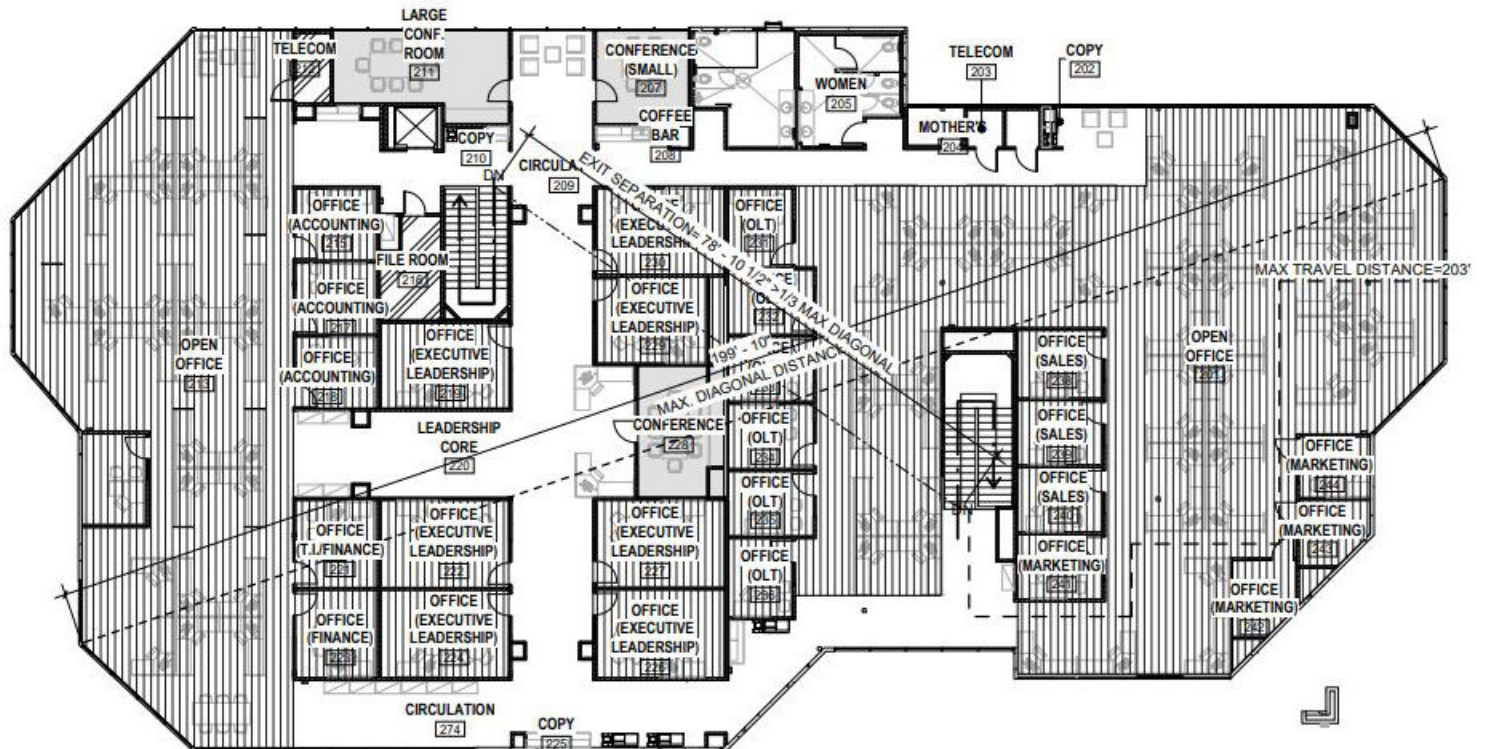
Hypothetical Plan

1st Floor



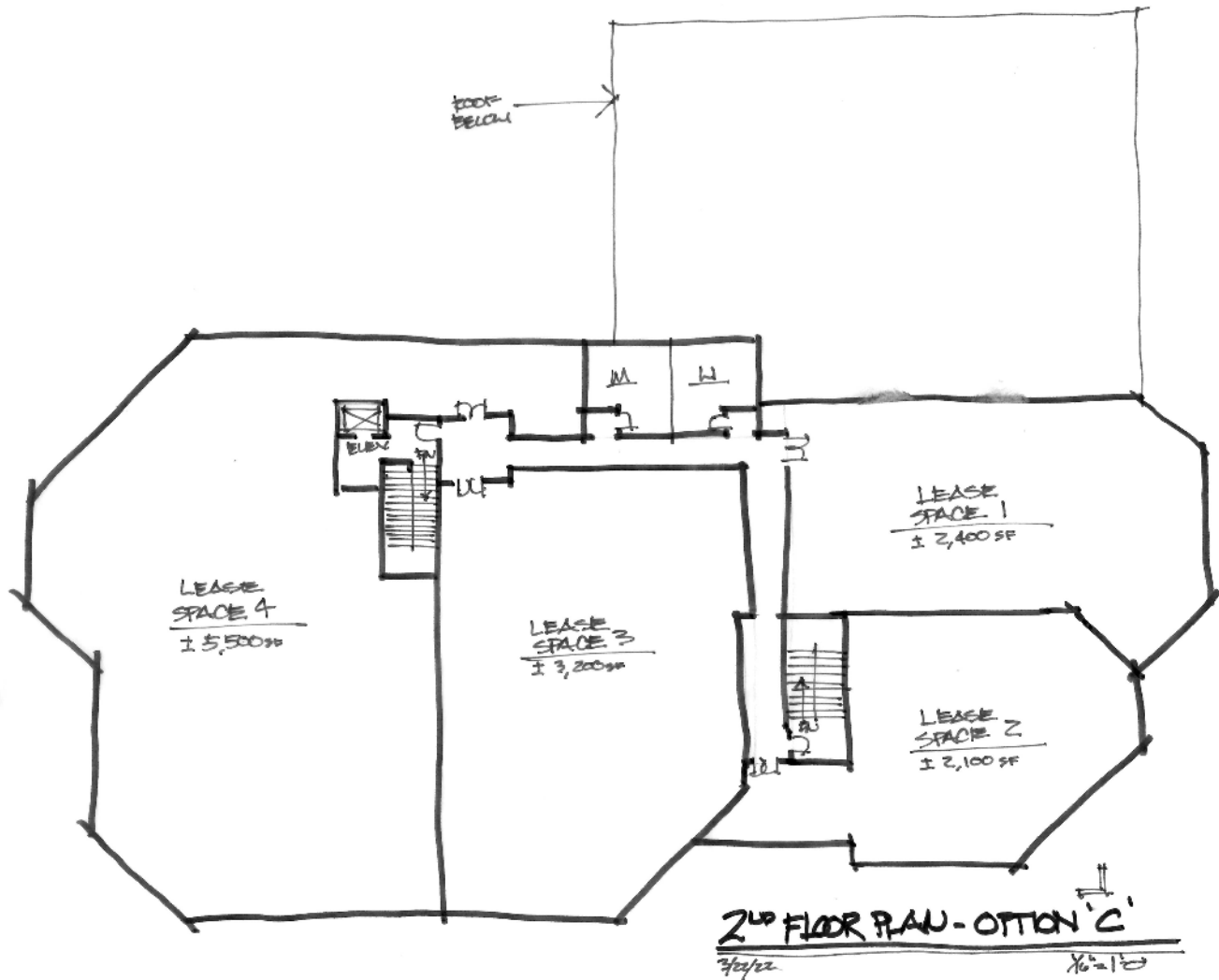
2811 Airpark Drive

2nd Floor



Hypothetical Plan

2nd Floor





2811 Airpark Drive

Santa Maria, CA

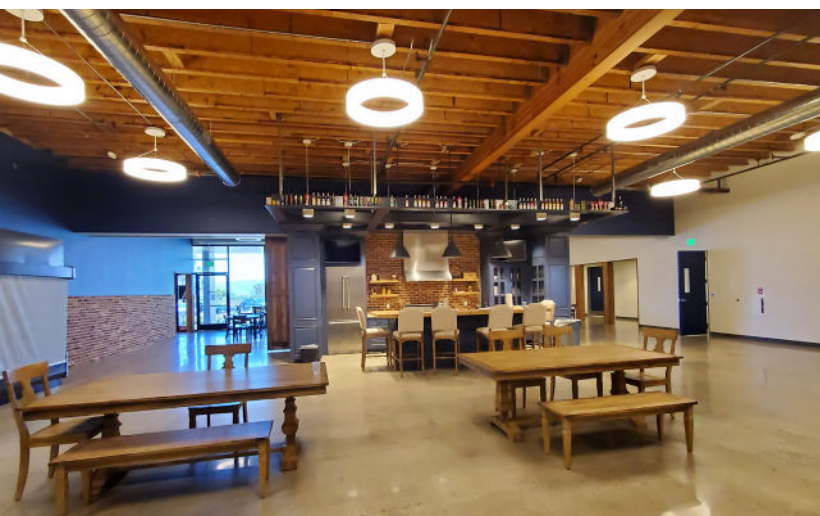


cresa

Cresa © 2021. All rights reserved. The information contained in this document has been obtained from sources believed reliable. While Cresa does not doubt its accuracy, Cresa has not verified it and makes no guarantee, warranty, or representation about it. It is your responsibility to independently confirm its accuracy and completeness. Any projections, opinions, assumptions or estimates used are for example only and do not represent the current or future performance of the property. The value of this transaction to you depends on tax and other factors which should be evaluated by your tax, financial and legal advisors. You and your advisors should conduct a careful, independent investigation of the property to determine to your satisfaction the suitability of the property for your needs.



2811 Airpark Drive Santa Maria, CA



cresa

Cresa © 2021. All rights reserved. The information contained in this document has been obtained from sources believed reliable. While Cresa does not doubt its accuracy, Cresa has not verified it and makes no guarantee, warranty, or representation about it. It is your responsibility to independently confirm its accuracy and completeness. Any projections, opinions, assumptions or estimates used are for example only and do not represent the current or future performance of the property. The value of this transaction to you depends on tax and other factors which should be evaluated by your tax, financial and legal advisors. You and your advisors should conduct a careful, independent investigation of the property to determine to your satisfaction the suitability of the property for your needs.