

111 W Micheltorena St
SANTA BARBARA, CA



For Sublease | Downtown Office Space | 3,911 SF

Experience. Integrity. Trust.
Since 1993

Caitlin Hensel
805.898.4374
caitlin@hayescommercial.com
lic. 01893341

Kristopher Roth
805.898.4361
kris@hayescommercial.com
lic. 01482732



PROPERTY SUMMARY

Abundant windows and patios allow plenty of natural light into the bright and airy offices overlooking a large courtyard with peaceful water feature. Suite 210 offers a good mix of open work spaces and private offices. Conveniently located near common restrooms. Across the street from local favorite lunch spot Three Pickles Deli and near the Public Market and vibrant theater district.

Rate: \$2.15 NNN (1.15)

Utilities: \$0.48 psf

Term: Through 7/31/2025 or potential for direct lease

Available: Now

Zoning: C-G

HVAC: Throughout

Restrooms: Yes, common

Parking: 10 spaces

Elevator: Yes

Furniture: Negotiable

To Show: Call listing agent



Second-floor courtyard

Experience. Integrity. Trust.
Since 1993

Caitlin Hensel
805.898.4374
caitlin@hayescommercial.com
lic. 01893341

Kristopher Roth
805.898.4361
kris@hayescommercial.com
lic. 01482732

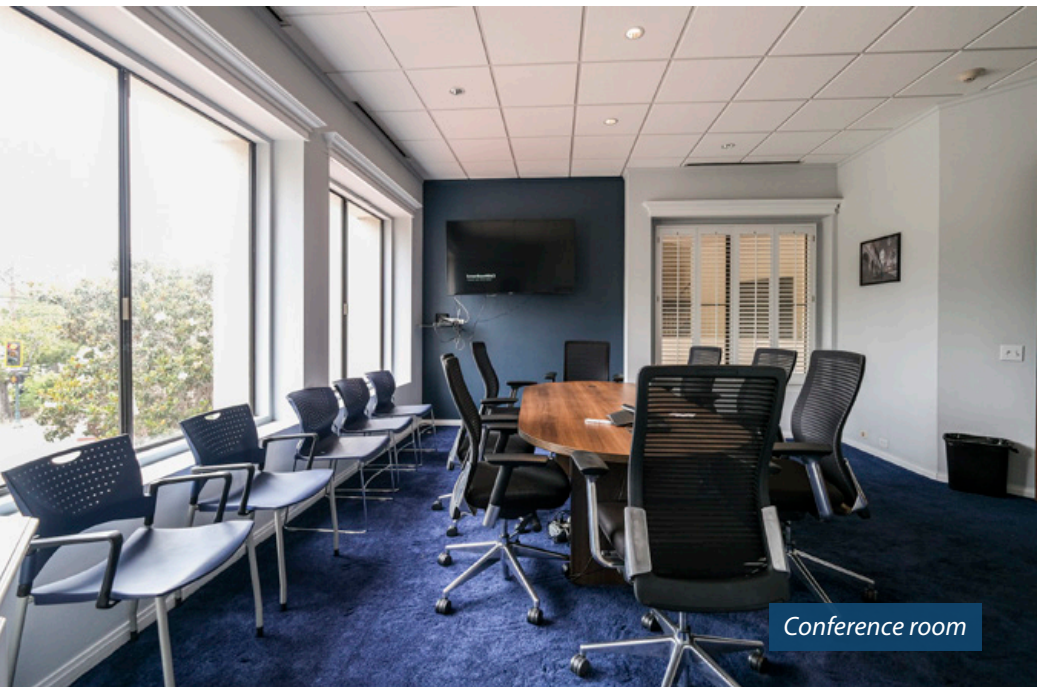
 **Hayes**
COMMERCIAL GROUP



Reception



Private office



Conference room



Open office

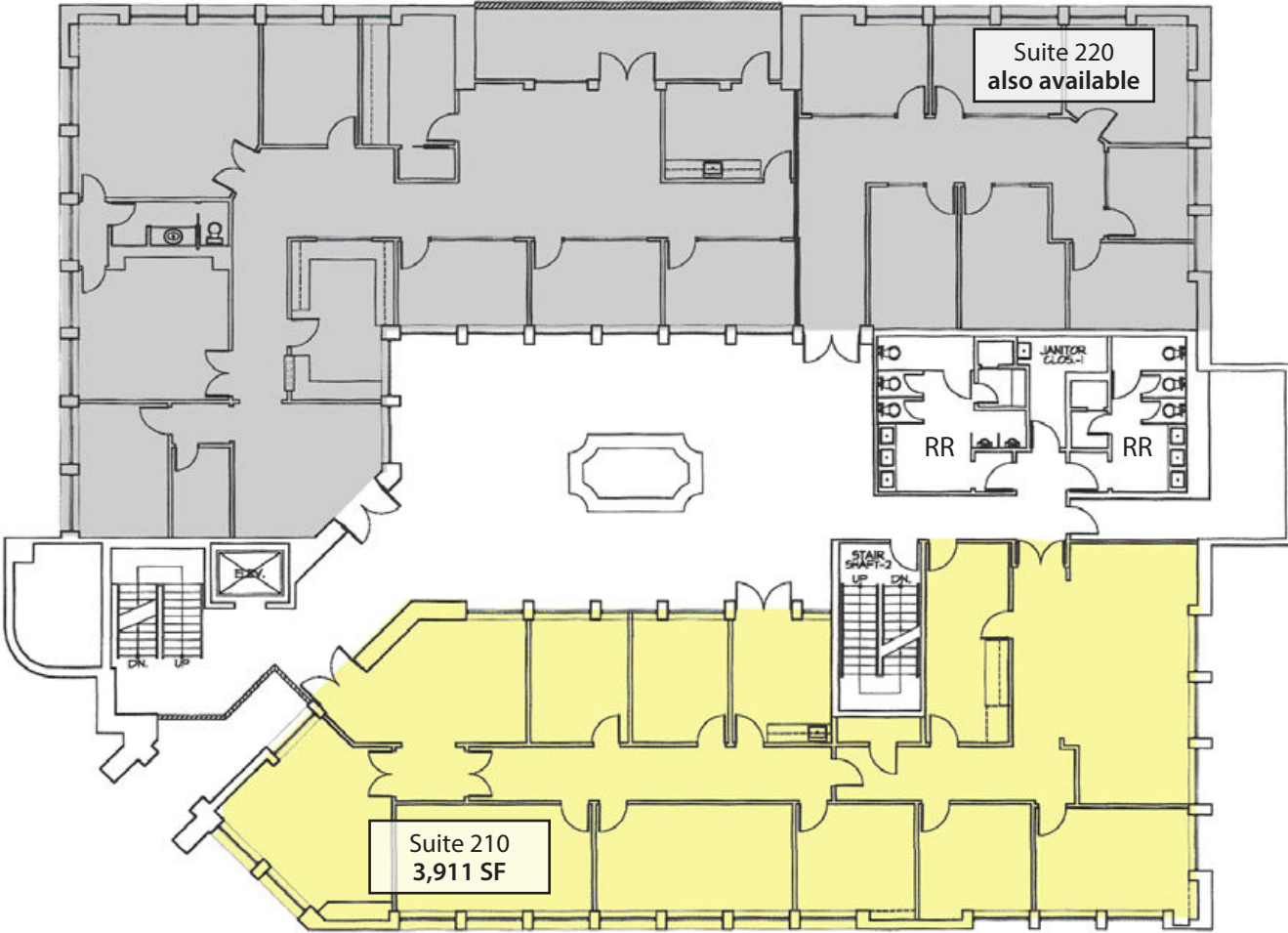
Experience. Integrity. Trust.
Since 1993

Caitlin Hensel
805.898.4374
caitlin@hayescommercial.com
lic. 01893341

Kristopher Roth
805.898.4361
kris@hayescommercial.com
lic. 01482732

 **Hayes**
COMMERCIAL GROUP

SECOND FLOOR PLAN



Experience. Integrity. Trust.
Since 1993

Caitlin Hensel
805.898.4374
caitlin@hayescommercial.com
lic. 01893341

Kristopher Roth
805.898.4361
kris@hayescommercial.com
lic. 01482732





Experience. Integrity. Trust.
Since 1993

Caitlin Hensel
805.898.4374
caitlin@hayescommercial.com
lic. 01893341

Kristopher Roth
805.898.4361
kris@hayescommercial.com
lic. 01482732

