

111 W Micheltorena St
SANTA BARBARA, CA



For Lease | Downtown Office Space | 1,722 - 6,147 SF

Experience. Integrity. Trust.
Since 1993

Caitlin Hensel
805.898.4374
caitlin@hayescommercial.com
lic. 01893341

Kristopher Roth
805.898.4361
kris@hayescommercial.com
lic. 01482732





PROPERTY SUMMARY

Abundant windows and patios allow plenty of natural light into these bright and airy spaces overlooking a large courtyard with peaceful water feature. Suite 300 is divisible and provides a good mix of open work space and private offices as well as multiple conference rooms and a large kitchenette, while Suite 220 features an efficient layout of private offices. Across the street from local favorite lunch spot Three Pickles Deli and near the Public Market and vibrant theater district.

Project Name: The Alanmar Building

<u>Suite</u>	<u>Size</u>	<u>Floor</u>	<u>Parking</u>
220	1,722 SF	2nd	5 spaces
300-A	3,376 SF	3rd	8 spaces
300-B	2,771 SF	3rd	6 spaces
300 (Entire floor)	6,147 SF	3rd	14 spaces

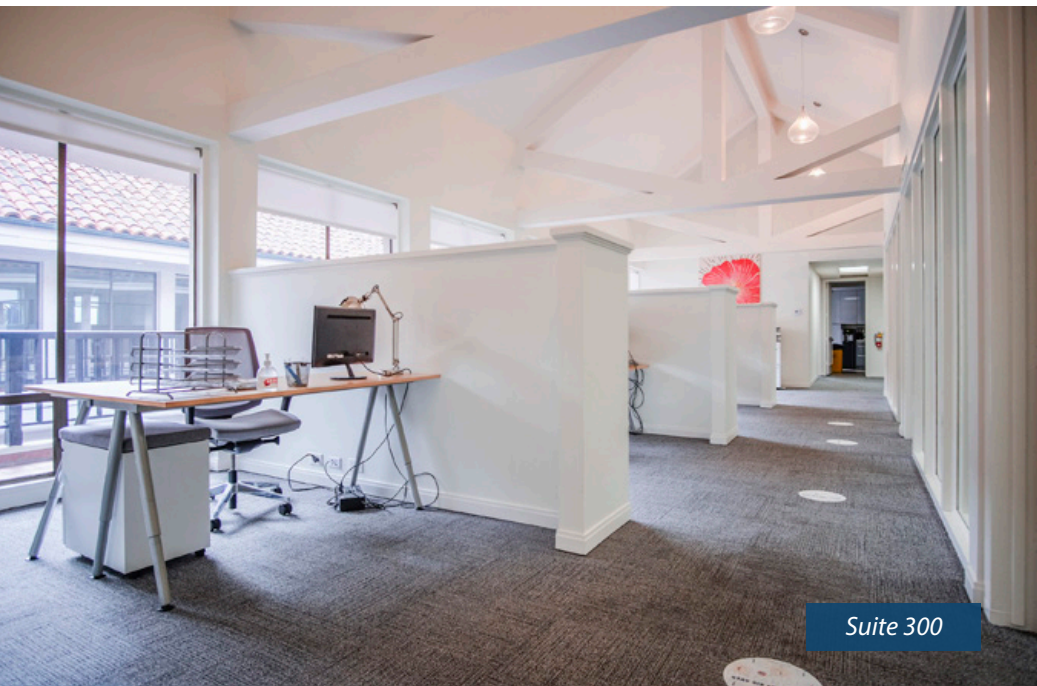
Rate:	\$2.35 NNN (.95)
Utilities:	\$0.40 psf
Term:	3-5 years
Available:	Suite 220, now; third floor spaces, 12/1/24
Zoning:	C-G
HVAC:	Throughout
Restrooms:	Yes, common
Elevator:	Yes

Experience. Integrity. Trust.
Since 1993

Caitlin Hensel
805.898.4374
caitlin@hayescommercial.com
lic. 01893341

Kristopher Roth
805.898.4361
kris@hayescommercial.com
lic. 01482732





Experience. Integrity. Trust.
Since 1993

Caitlin Hensel
805.898.4374
caitlin@hayescommercial.com
lic. 01893341

Kristopher Roth
805.898.4361
kris@hayescommercial.com
lic. 01482732

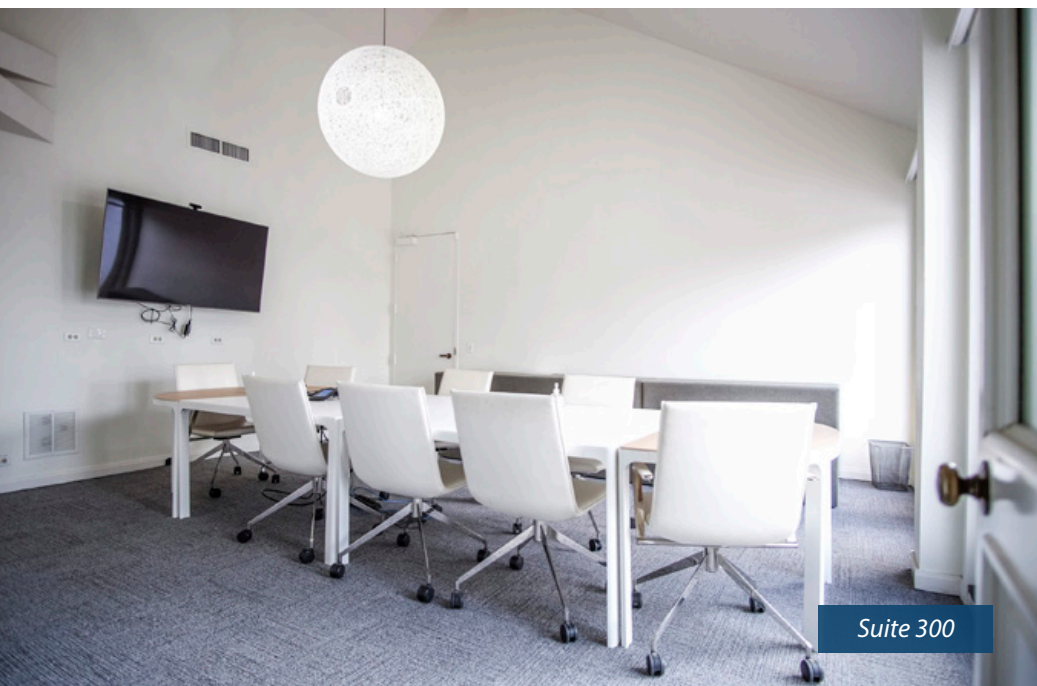
 **Hayes**
COMMERCIAL GROUP



Suite 300



Suite 300



Suite 300



Second-floor courtyard

Experience. Integrity. Trust.
Since 1993

Caitlin Hensel
805.898.4374
caitlin@hayescommercial.com
lic. 01893341

Kristopher Roth
805.898.4361
kris@hayescommercial.com
lic. 01482732

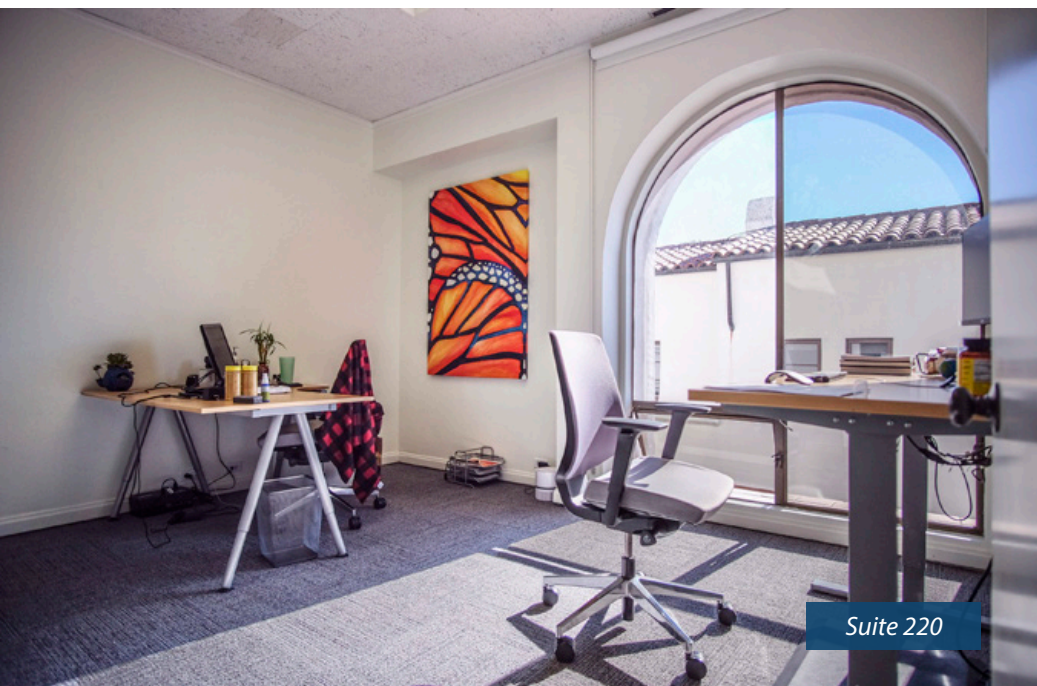
 **Hayes**
COMMERCIAL GROUP



Suite 220



Suite 220



Suite 220



Suite 220

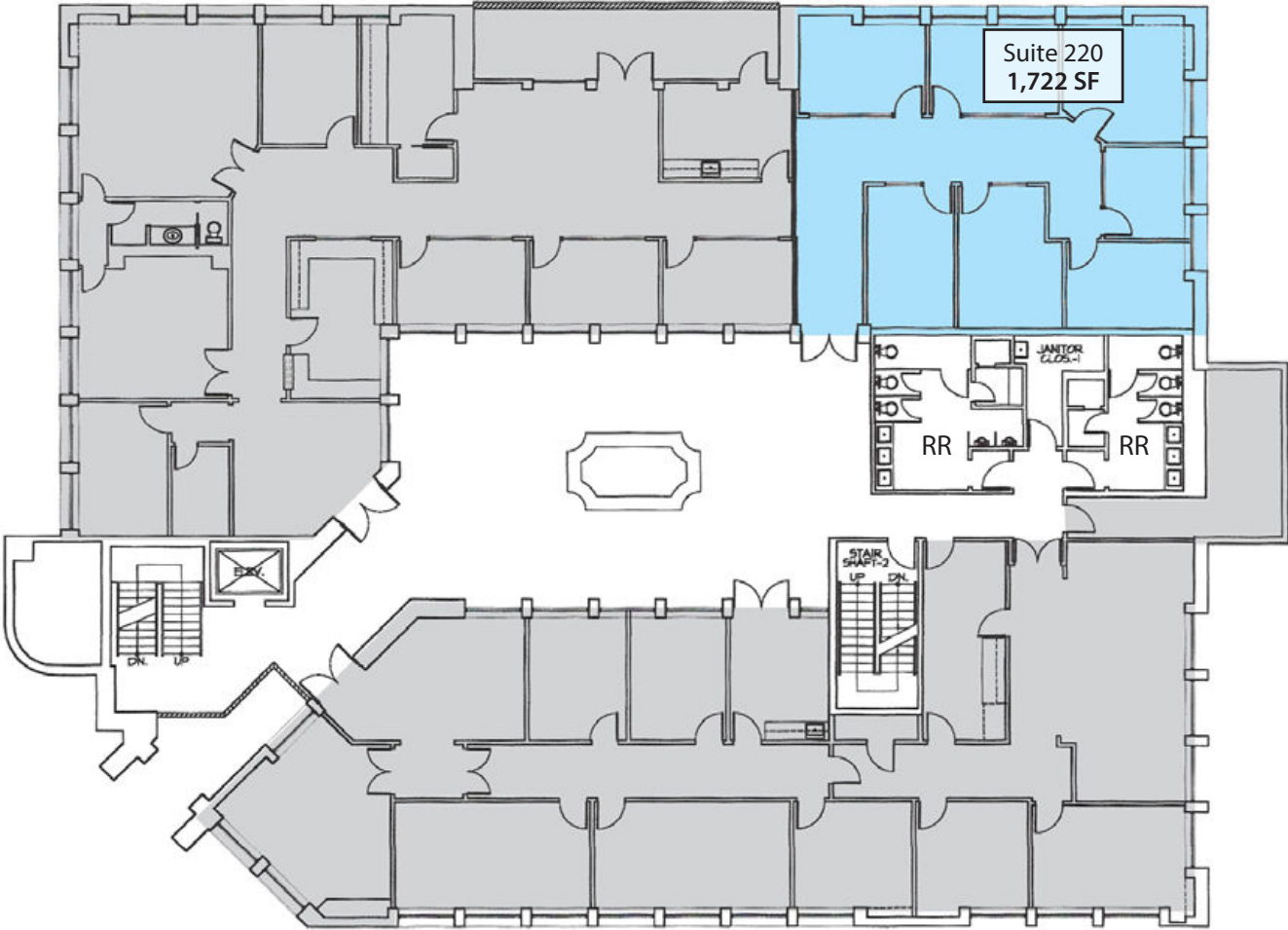
Experience. Integrity. Trust.
Since 1993

Caitlin Hensel
805.898.4374
caitlin@hayescommercial.com
lic. 01893341

Kristopher Roth
805.898.4361
kris@hayescommercial.com
lic. 01482732

 **Hayes**
COMMERCIAL GROUP

SECOND FLOOR PLAN



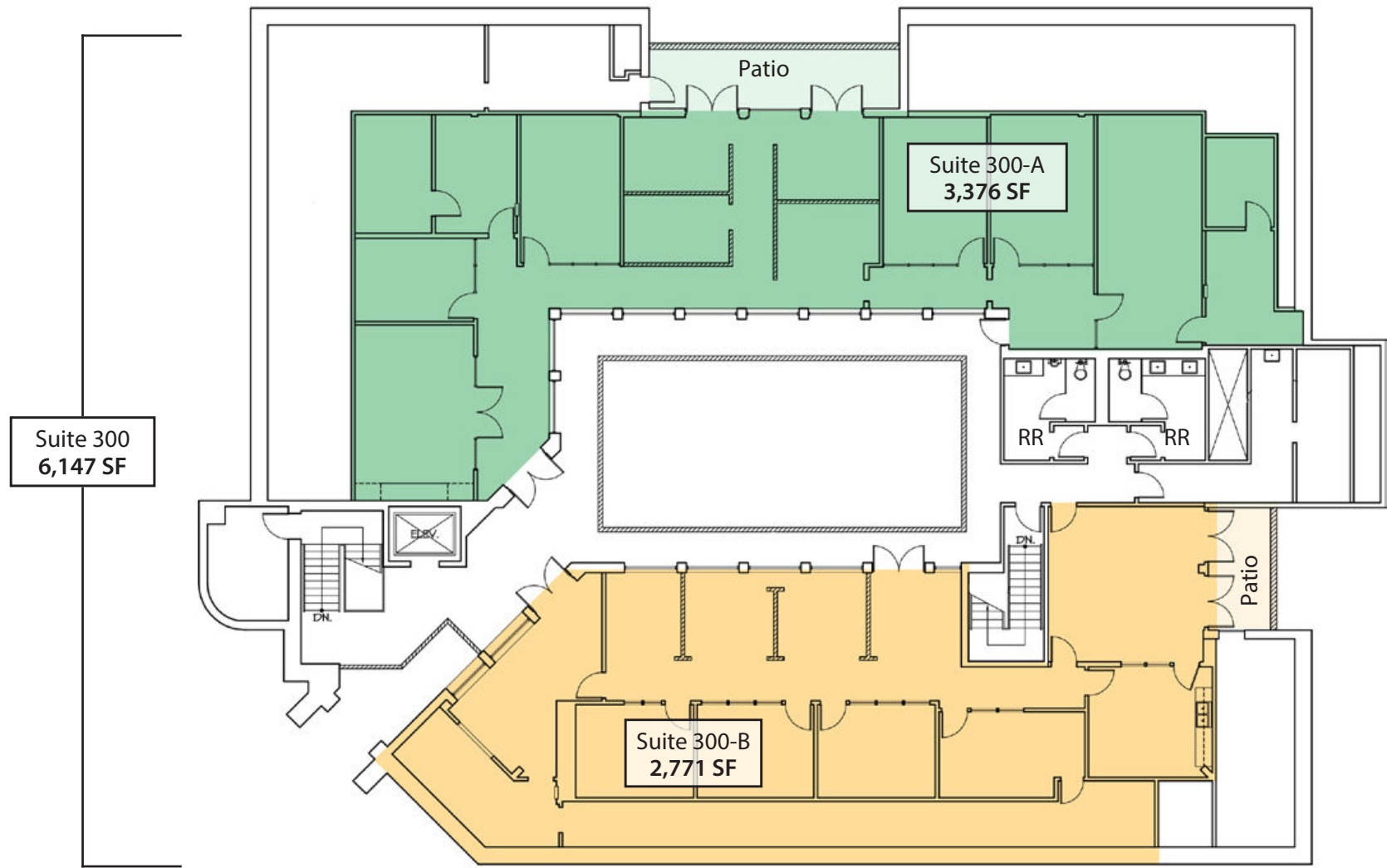
Experience. Integrity. Trust.
Since 1993

Caitlin Hensel
805.898.4374
caitlin@hayescommercial.com
lic. 01893341

Kristopher Roth
805.898.4361
kris@hayescommercial.com
lic. 01482732



THIRD FLOOR PLAN



Experience. Integrity. Trust.
Since 1993

Caitlin Hensel
805.898.4374
caitlin@hayescommercial.com
lic. 01893341

Kristopher Roth
805.898.4361
kris@hayescommercial.com
lic. 01482732





Experience. Integrity. Trust.
Since 1993

Caitlin Hensel
805.898.4374
caitlin@hayescommercial.com
lic. 01893341

Kristopher Roth
805.898.4361
kris@hayescommercial.com
lic. 01482732

