

5290 Overpass Rd

Units 201, 202 & 203

GOLETA, CA

5290

CREEKSIDE
Plaza

For Sale | Flexible Office Condo in Garden Setting | 1,114 SF

Experience. Integrity. Trust.
Since 1993

Caitlin Hensel
805.898.4374
caitlin@hayescommercial.com
lic. 01893341

Kristopher Roth
805.898.4361
kris@hayescommercial.com
lic. 01482732



PROPERTY SUMMARY

Office condo available for sale at Creekside Plaza, a garden-style complex with walking and biking trails nearby. Location offers easy access to Hwy 101, Magnolia Shopping Center, downtown Santa Barbara, and Santa Barbara Airport. This second floor elevator served condo features three units and entrances and is currently 100% leased to multiple tenants (two of which can be occupied shortly after escrow) providing maximum flexibility for either an investor or an owner-user.

Price: \$500,000

HOA: \$933/mo

Utilities: \$125/mo

Floor: 2nd floor

Elevator: Yes

Parking: 4 assigned spaces plus ample guest parking

Restrooms: Common

APN: 065-660-071

Zoning: OI

To Show: Call listing agents; please do not disturb tenants



Unit Mix:	Unit	SF	Tenant
	201	294 SF	Callie Barbour Sewing
	202	295 SF	Huey and Santoyo Accounting
	203	525 SF	Ramanda and Buie Lawyers
Total:		1,114 SF	

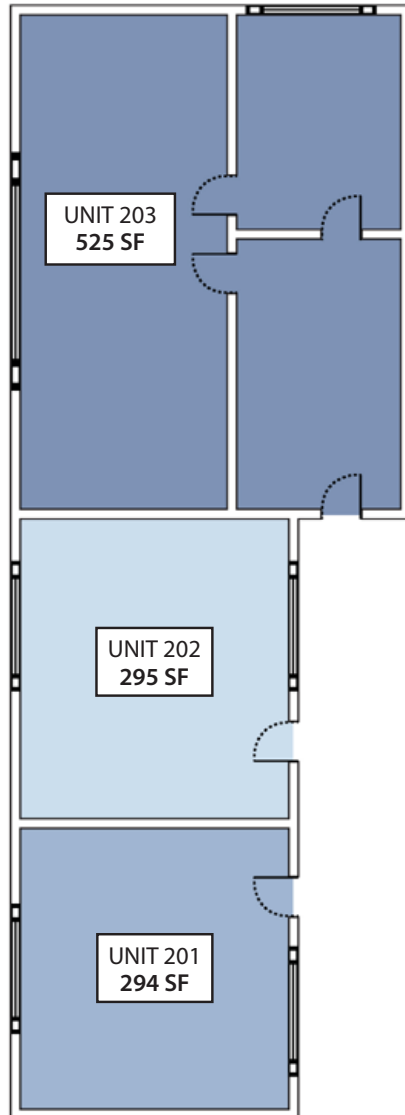
Experience. Integrity. Trust.
Since 1993

Caitlin Hensel
805.898.4374
caitlin@hayescommercial.com
lic. 01893341

Kristopher Roth
805.898.4361
kris@hayescommercial.com
lic. 01482732

 **Hayes**
COMMERCIAL GROUP

FLOOR PLAN



Experience. Integrity. Trust.
Since 1993

Caitlin Hensel
805.898.4374
caitlin@hayescommercial.com
lic. 01893341

Kristopher Roth
805.898.4361
kris@hayescommercial.com
lic. 01482732





Experience. Integrity. Trust.
Since 1993

Caitlin Hensel
805.898.4374
caitlin@hayescommercial.com
lic. 01893341

Kristopher Roth
805.898.4361
kris@hayescommercial.com
lic. 01482732



GOLETA



Conveniently located just 8 miles from Santa Barbara, the city of Goleta is nestled between a backdrop of majestic mountains and sprawling coastal bluffs. Home to beautifully-designed business parks, safe and family-oriented neighborhoods, and a world-class university, Goleta is among California's premier locations for businesses.



Source: esri. 2023 demographics

Experience. Integrity. Trust.
Since 1993

Caitlin Hensel
805.898.4374
caitlin@hayescommercial.com
lic. 01893341

Kristopher Roth
805.898.4361
kris@hayescommercial.com
lic. 01482732

