

1900 State St

SANTA BARBARA, CA



For Lease | Downtown Office Suites in High-Visibility Building | **784 - 986 SF**

Experience. Integrity. Trust.
Since 1993

Greg Bartholomew
805.898.4395
greg@hayescommercial.com
lic. 01131126

Dan Ferrick
805.898.4371
dferrick@hayescommercial.com
lic. 01936711



PROPERTY SUMMARY

These suites are well-situated in a high-visibility office building at the intersection of State Street and Pedregosa Street near downtown Santa Barbara. All utilities included in rental rate! Tenant only pays for phone and internet.

	<u>Size</u>	<u>Available</u>
Suite C	924 SF	Now
Suite D	987 SF	6/1/2025
Suite L	784 SF	Now

Rate	\$2.50 FSG
Term	Negotiable
Zoning	C-2
Parking	Two reserved spaces for each suite
HVAC	Yes, throughout
Restrooms	Common
To Show	Call listing agent



Experience. Integrity. Trust.
Since 1993

Greg Bartholomew
805.898.4395
greg@hayescommercial.com
lic. 01131126

Dan Ferrick
805.898.4371
dferrick@hayescommercial.com
lic. 01936711

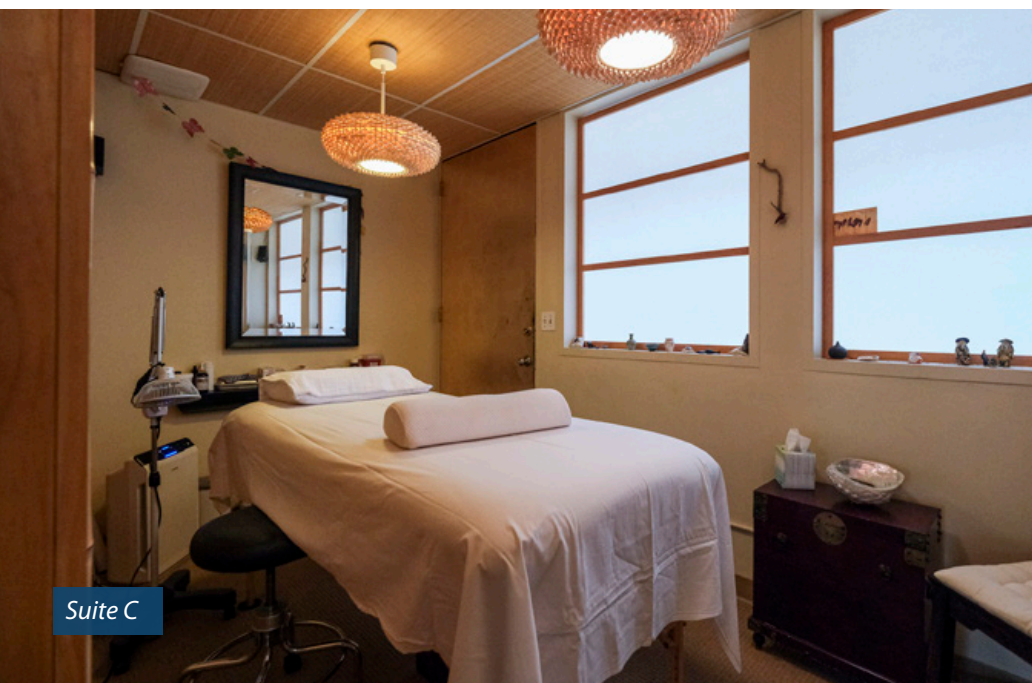
 **Hayes**
COMMERCIAL GROUP



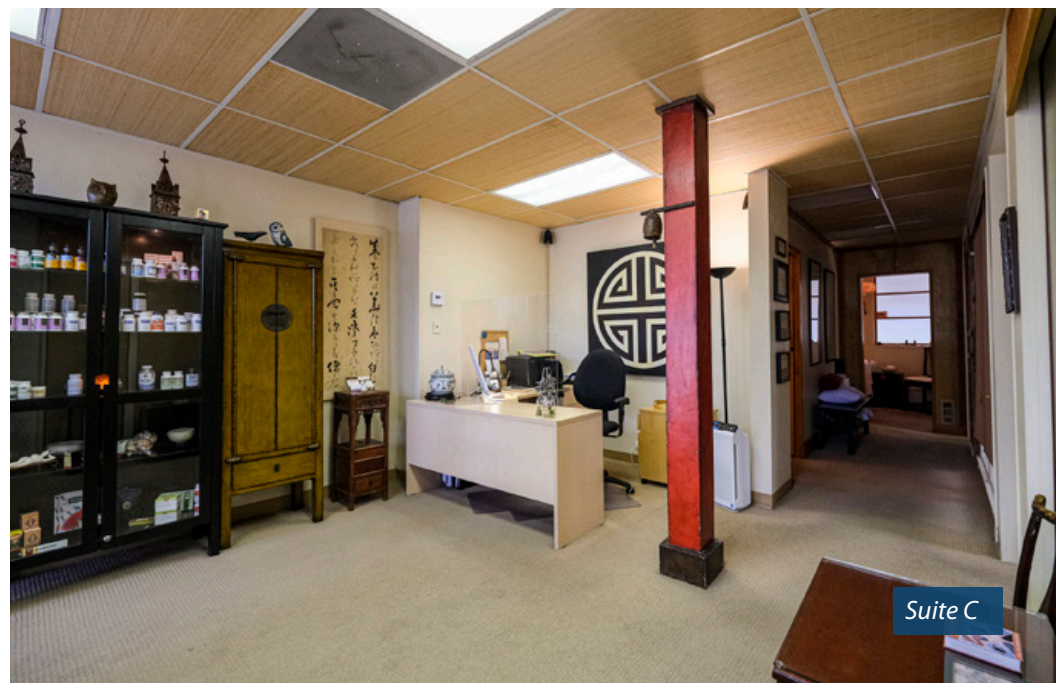
Suite L



Suite L



Suite C



Suite C

Experience. Integrity. Trust.
Since 1993

Greg Bartholomew
805.898.4395
greg@hayescommercial.com
lic. 01131126

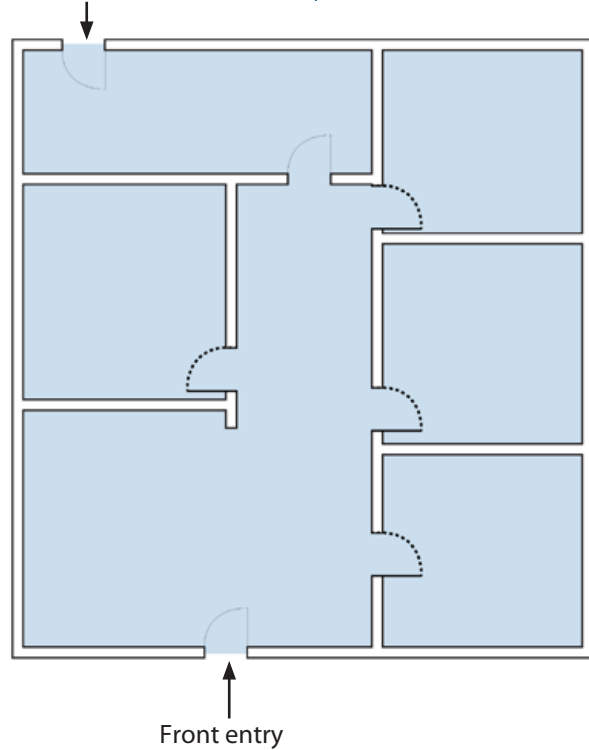
Dan Ferrick
805.898.4371
dferrick@hayescommercial.com
lic. 01936711

 **Hayes**
COMMERCIAL GROUP

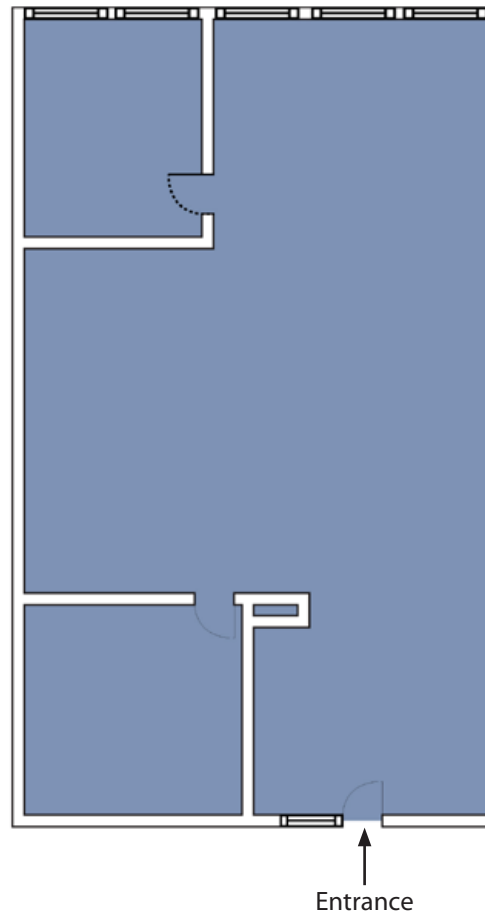
HayesCommercial.com | Santa Barbara, CA

1900 STATE STREET FLOOR PLANS

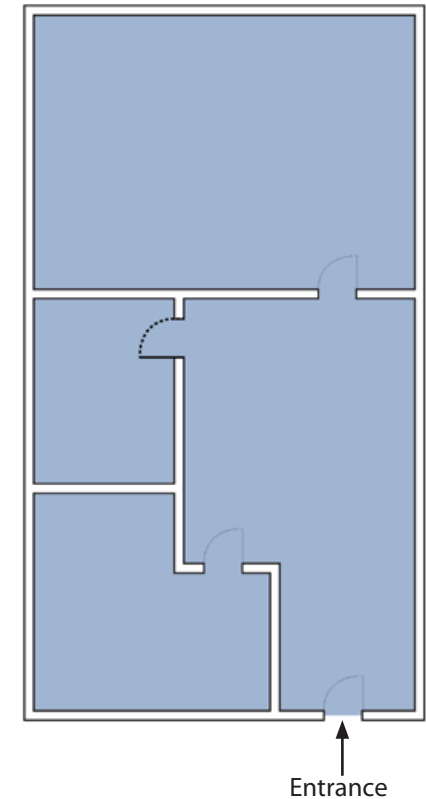
Back entry **SUITE C | 924 SF**



SUITE D | 987 SF



SUITE L | 784 SF



**Note: floor plans not to scale*

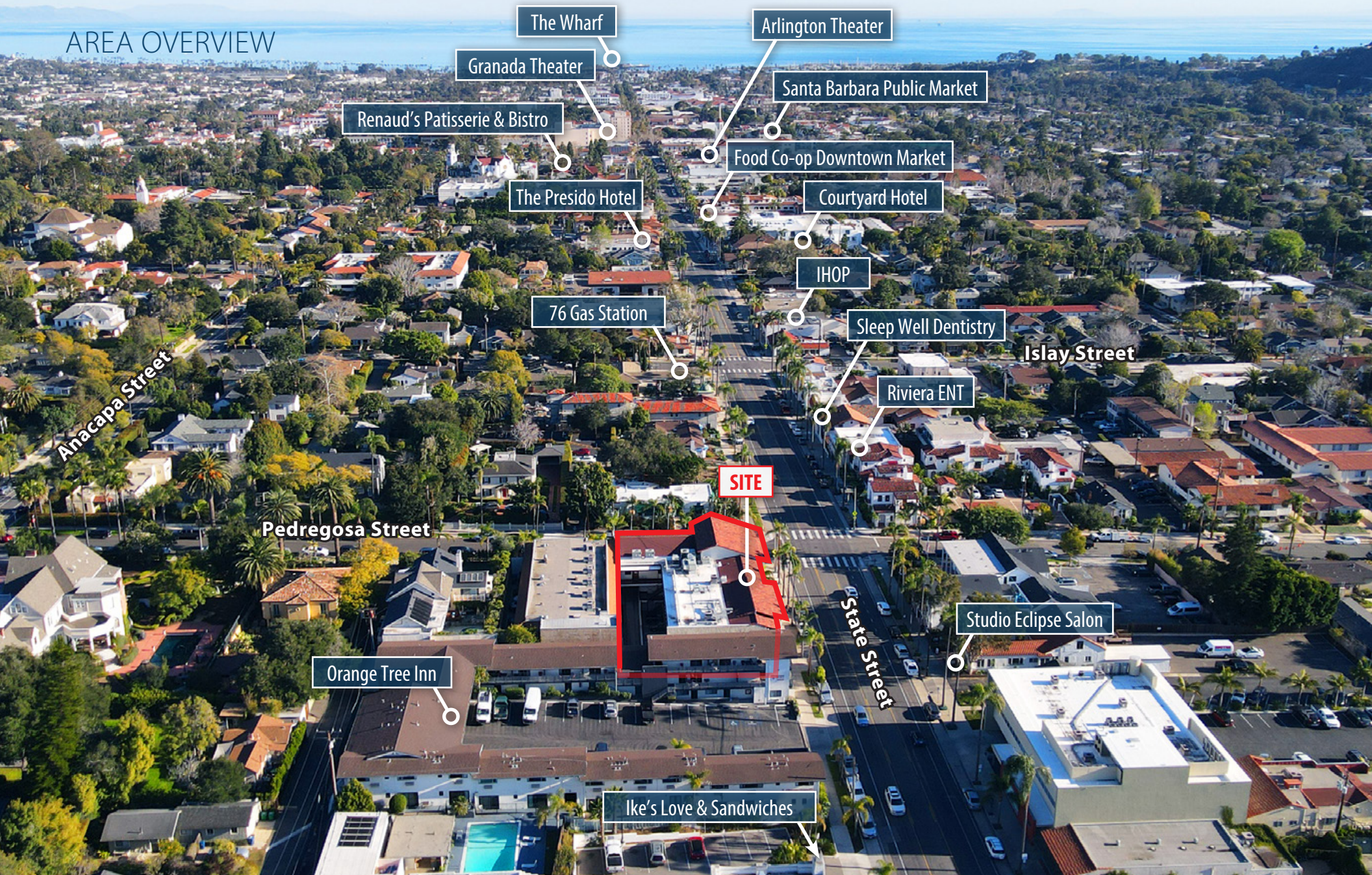
Experience. Integrity. Trust.
Since 1993

Greg Bartholomew
805.898.4395
greg@hayescommercial.com
lic. 01131126

Dan Ferrick
805.898.4371
dferrick@hayescommercial.com
lic. 01936711



AREA OVERVIEW



Experience. Integrity. Trust.
Since 1993

Greg Bartholomew
805.898.4395
greg@hayescommercial.com
lic. 01131126

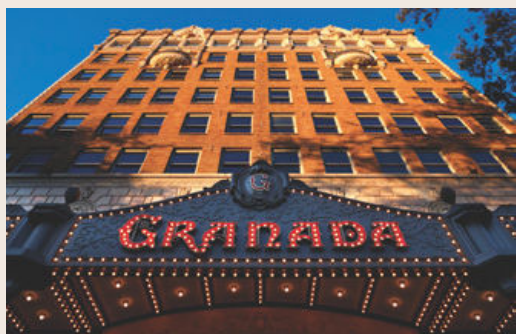
Dan Ferrick
805.898.4371
dferrick@hayescommercial.com
lic. 01936711





STATE STREET

Santa Barbara's retail heart



At the heart of Santa Barbara lies State Street, dense with countless options for food and drink, shopping, and entertainment. Stretching the entire length of downtown and eventually turning into Stearns Wharf, State Street serves as the retail hub and most sought-after tourist attraction in the city. Up and down State Street, food & drink hotspots continue to thrive while new retailers join the scene, pulling in locals and tourists alike.



'Walker's Paradise'

WALKSCORE

96

Daily errands do not require a car



FOOT TRAFFIC
(pedestrians per day)

12,000



AUTO TRAFFIC
(at Carrillo St and State St)

11,854 CPD



'Biker's Paradise'

BIKESCORE

99

Daily errands can be done on a bike



AREA POPULATION
(3 mi radius)

89,878



MEDIAN HOUSEHOLD INCOME
(3 mi radius)

\$153,787

Source: esri. 2023 demographics centered on 900 block of State Street.

Experience. Integrity. Trust.
Since 1993

Greg Bartholomew
805.898.4395
greg@hayescommercial.com
lic. 01131126

Dan Ferrick
805.898.4371
dferrick@hayescommercial.com
lic. 01936711

Hayes
COMMERCIAL GROUP

HayesCommercial.com | Santa Barbara, CA