

211 E Victoria St

SANTA BARBARA, CA



For Lease | Downtown Second-Floor Office Suite | 1,200 SF

Experience. Integrity. Trust.
Since 1993

Greg Bartholomew
805.898.4395
greg@hayescommercial.com
lic. 01131126





PROPERTY SUMMARY

Efficient second-floor office suite available with 4 private offices, conference room, and kitchenette. Fantastic downtown location close to the Santa Barbara County Courthouse, Alameda Park, and just two blocks from the theater district and the many restaurants, retail shops, and other amenities of State Street.

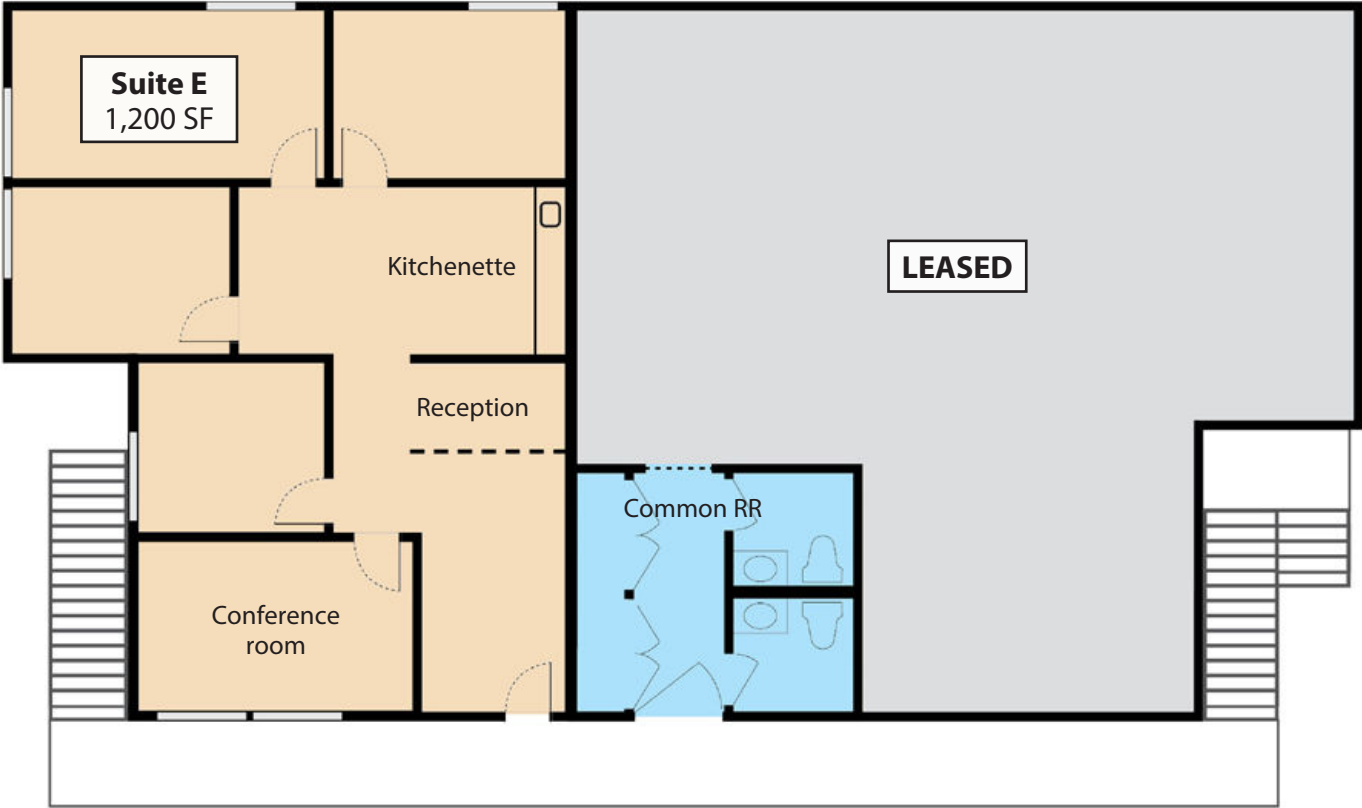
Suite:	E
Size:	1,200 SF
Rate:	\$2.65 MGR + utilities
Utilities:	\$0.27 psf
Available:	9/1/25
Term:	3-5 years
Floor:	Second
HVAC:	Yes
Restrooms:	Common
Kitchenette:	Yes
Parking:	3 reserved spaces
Signage:	Building directory and suite signage
To Show:	CLA

Experience. Integrity. Trust.
Since 1993

Greg Bartholomew
805.898.4395
greg@hayescommercial.com
lic. 01131126



SECOND FLOOR PLAN



Experience. Integrity. Trust.
Since 1993

Greg Bartholomew
805.898.4395
greg@hayescommercial.com
lic. 01131126



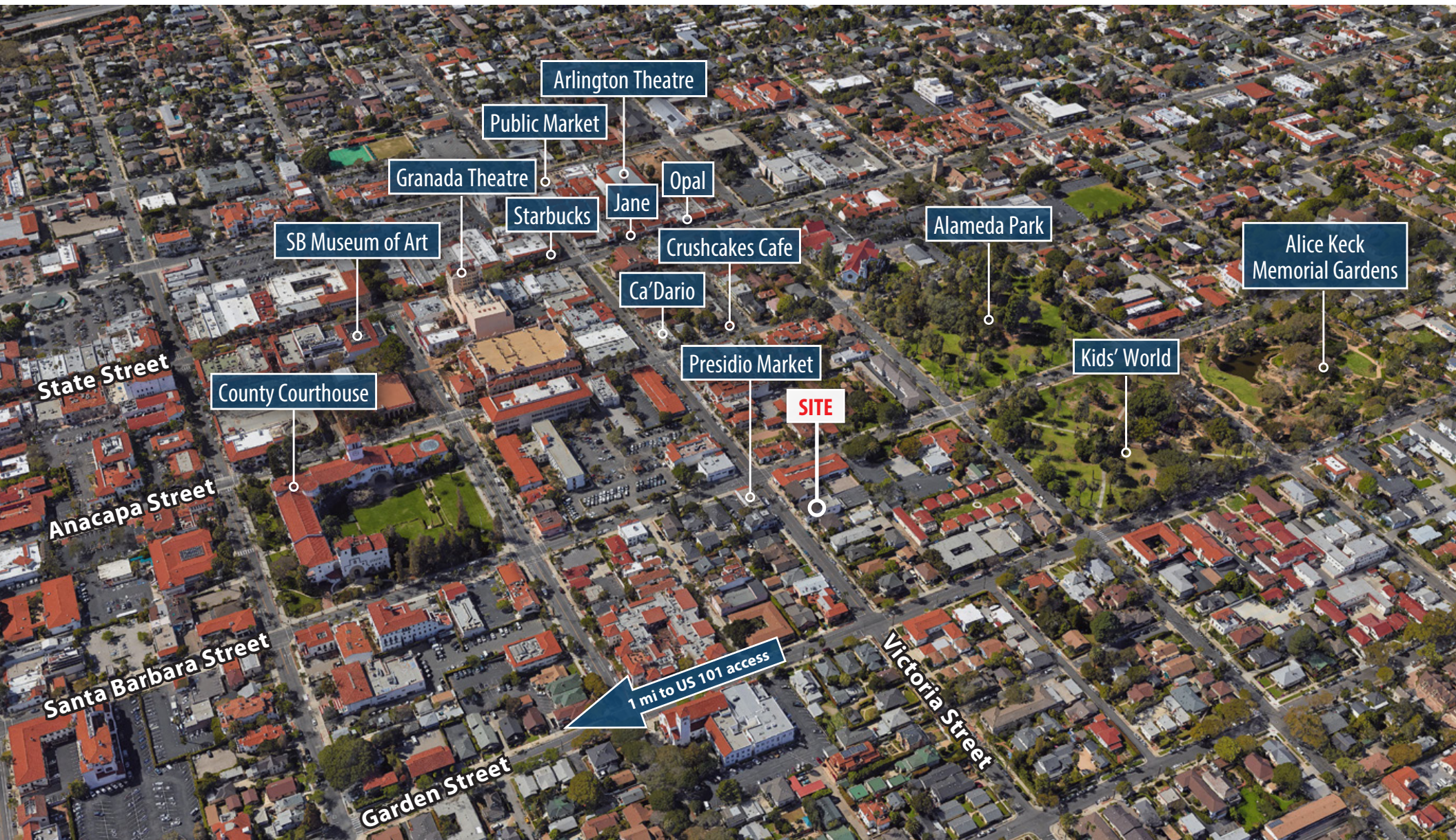


*Experience. Integrity. Trust.
Since 1993*

Greg Bartholomew
805.898.4395
greg@hayescommercial.com
lic. 01131126



NEIGHBORHOOD OVERVIEW



Experience. Integrity. Trust.
Since 1993

Greg Bartholomew
805.898.4395
greg@hayescommercial.com
lic. 01131126

