

251 N Fairview Ave
GOLETA, CA



For Lease | Retail Space in **Fairview Shopping Center** | 10,378 SF

Experience. Integrity. Trust.
Since 1993

Caitlin Hensel
805.898.4374
caitlin@hayescommercial.com
lic. 01893341

Kristopher Roth
805.898.4361
kris@hayescommercial.com
lic. 01482732





PROPERTY SUMMARY

Retail opportunity in the Fairview Shopping Center, the area's finest grocery-anchored neighborhood center bolstered by Sprouts, Michaels, Rite Aid and Miner's Hardware. The subject offers prominent signage and plentiful shared parking. Other tenants include highly trafficked businesses such as Starbucks, Jersey Mike's, Chicken Ranch, Wells Fargo, U.S. Bank and more.

SITE

Size: 10,378 SF
Rate: \$2.35 NNN (.38)
Term: 10 years
Available: Q1 2026
Parking: 4/1,000 SF
To Show: Call listing agents

TRAFFIC COUNT

North Fairview Avenue (at Calle Real) **22,220 CPD**

DEMOGRAPHICS

	<u>3 Mile</u>	<u>5 Mile</u>	<u>7 mile</u>
Residential Population	66,775	96,990	136,200
Avg. Household Income	\$133,654	\$142,236	\$147,764

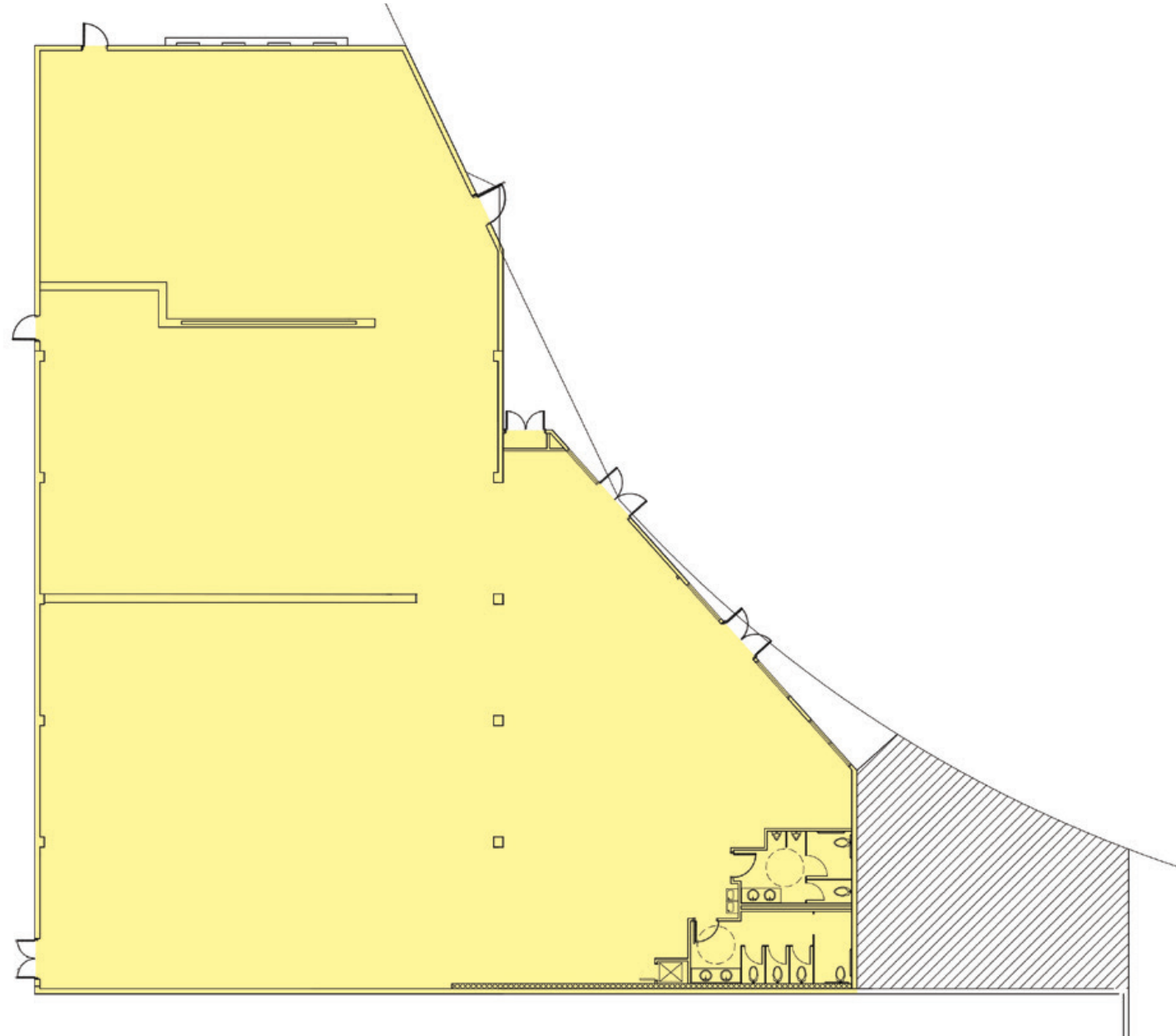
Experience. Integrity. Trust.
Since 1993

Caitlin Hensel
805.898.4374
caitlin@hayescommercial.com
lic. 01893341

Kristopher Roth
805.898.4361
kris@hayescommercial.com
lic. 01482732



FLOOR PLAN



Experience. Integrity. Trust.
Since 1993

Caitlin Hensel
805.898.4374
caitlin@hayescommercial.com
lic. 01893341

Kristopher Roth
805.898.4361
kris@hayescommercial.com
lic. 01482732





Experience. Integrity. Trust.
Since 1993

Caitlin Hensel
805.898.4374
caitlin@hayescommercial.com
lic. 01893341

Kristopher Roth
805.898.4361
kris@hayescommercial.com
lic. 01482732





Experience. Integrity. Trust.
Since 1993

Caitlin Hensel
805.898.4374
caitlin@hayescommercial.com
lic. 01893341

Kristopher Roth
805.898.4361
kris@hayescommercial.com
lic. 01482732

 **Hayes**
COMMERCIAL GROUP