

# 30 S La Patera Ln

GOLETA, CA



**For Lease** | R&D/Warehouse Space with Office | 10,380 - 24,337 SF

*Experience. Integrity. Trust.*  
*Since 1993*

**Caitlin Hensel**  
**805.898.4374**  
[caitlin@hayescommercial.com](mailto:caitlin@hayescommercial.com)  
lic. 01893341

**Kristopher Roth**  
**805.898.4361**  
[kris@hayescommercial.com](mailto:kris@hayescommercial.com)  
lic. 01482732





## PROPERTY SUMMARY

Great warehouse and office space in the heart of Goleta near the airport, UCSB, and future Goleta Transit Center. **Unit 8** is a flexible R&D/industrial/office space with high ceilings and potential to convert to clear-span warehouse space with roll-up door. **Unit 9** is warehouse space with kitchenette, conference room, private offices, ground-level loading and access to a shared dock. **Unit 11** is bright and airy second-floor office space with a good mix of open area and private offices. Units 8 and 9 can be combined for a total of 24,337 SF.

	<u>Floor</u>	<u>Size</u>	<u>Ceiling</u>	<u>Available</u>
<i>Unit 8</i>	Ground	11,532 SF	27'	Now
<i>Unit 9</i>	Ground	12,805 SF	27'	Now
<i>Unit 11</i>	Mezzanine	10,380 SF	12'	Now

**Rate:** \$1.10 NNN (.50)

**Bldg. Size:** 179,667 SF

**Term:** 3-10 years

**Parking:** 1.76 / 1,000 SF

**Restrooms:** Two common sets. Unit 8 has private restroom.

**Zoning:** M-RP/BP

**To Show:** CLA

**Tenants:** Kate Farms, Aqua-Flo, Northrop Grumman, Microdyn Nadir, OSI Hardware



*Experience. Integrity. Trust.*  
*Since 1993*

**Caitlin Hensel**  
**805.898.4374**  
[caitlin@hayescommercial.com](mailto:caitlin@hayescommercial.com)  
lic. 01893341

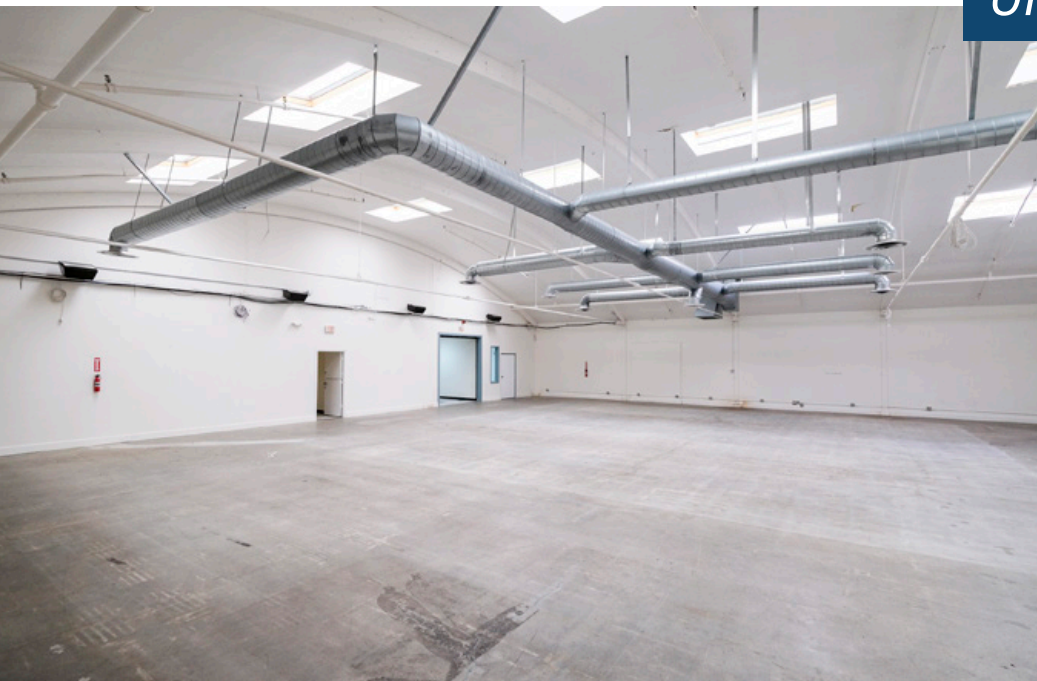
**Kristopher Roth**  
**805.898.4361**  
[kris@hayescommercial.com](mailto:kris@hayescommercial.com)  
lic. 01482732

 **Hayes**  
COMMERCIAL GROUP





## Unit 8



*Experience. Integrity. Trust.*  
Since 1993

**Caitlin Hensel**  
805.898.4374  
[caitlin@hayescommercial.com](mailto:caitlin@hayescommercial.com)  
lic. 01893341

**Kristopher Roth**  
805.898.4361  
[kris@hayescommercial.com](mailto:kris@hayescommercial.com)  
lic. 01482732

 **Hayes**  
COMMERCIAL GROUP





## Unit 9



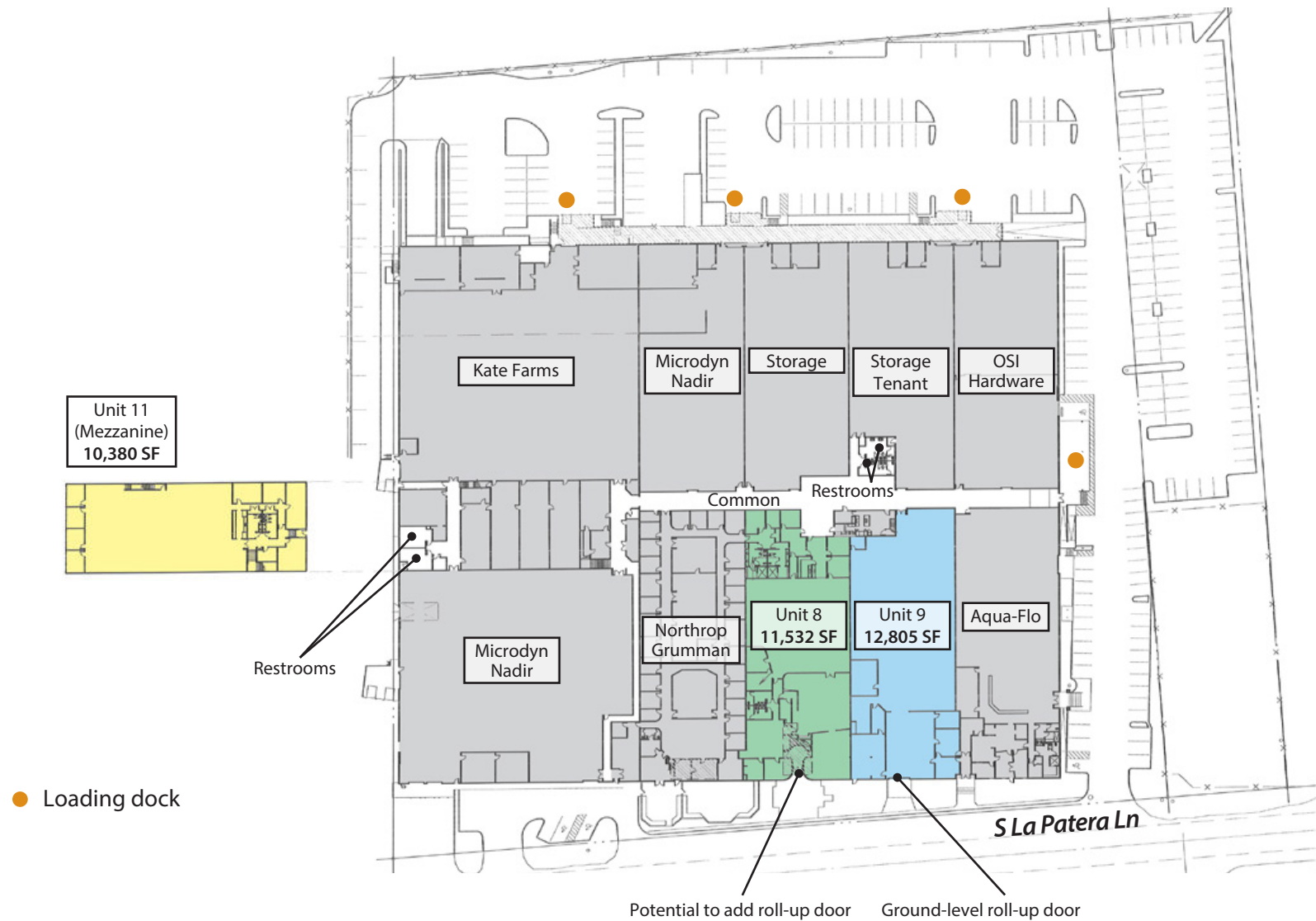
*Experience. Integrity. Trust.*  
Since 1993

**Caitlin Hensel**  
805.898.4374  
[caitlin@hayescommercial.com](mailto:caitlin@hayescommercial.com)  
lic. 01893341

**Kristopher Roth**  
805.898.4361  
[kris@hayescommercial.com](mailto:kris@hayescommercial.com)  
lic. 01482732

 **Hayes**  
COMMERCIAL GROUP

# FLOOR PLAN



Experience. Integrity. Trust.  
Since 1993

**Caitlin Hensel**  
805.898.4374  
[caitlin@hayescommercial.com](mailto:caitlin@hayescommercial.com)  
lic. 01893341

**Kristopher Roth**  
805.898.4361  
[kris@hayescommercial.com](mailto:kris@hayescommercial.com)  
lic. 01482732





## AREA OVERVIEW



### DRIVING DISTANCE TO...

Goleta commuter Amtrak	350 ft
101 Freeway Access	1.2 mi
Santa Barbara Airport	1.7 mi
UC Santa Barbara	2.7 mi
Downtown Santa Barbara	9.6 mi
Los Angeles	105 mi

### NEIGHBORING BUSINESSES

1. Direct Relief
2. Fire station
3. Southern California Edison
4. Seek Thermal  
Asylum Research
5. Residence Inn by Marriott
6. GraphicInk
7. Bruker Nano Surface
8. MicroDyn Nadir
9. Pacific Design Technologies
10. Goleta commuter Amtrak
11. Bardex
12. Innovative Micro Technologies
13. Raytheon
14. Enerpro
15. Biopac Systems
16. Freedom Photonics
17. Vitamin Angels  
Strategic Health Partners
18. City of Goleta
19. Resonant

*Experience. Integrity. Trust.*  
*Since 1993*

**Caitlin Hensel**  
805.898.4374  
[caitlin@hayescommercial.com](mailto:caitlin@hayescommercial.com)  
lic. 01893341

**Kristopher Roth**  
805.898.4361  
[kris@hayescommercial.com](mailto:kris@hayescommercial.com)  
lic. 01482732

