

990 Cindy Ln  
CARPINTERIA, CA



**For Lease** | Efficient Office Suite Near The Bluffs | 2,143 SF

*Experience. Integrity. Trust.*  
*Since 1993*

**Kristopher Roth**  
805.898.4361  
[kris@hayescommercial.com](mailto:kris@hayescommercial.com)  
lic. 01482732

**Caitlin Hensel**  
805.898.4374  
[caitlin@hayescommercial.com](mailto:caitlin@hayescommercial.com)  
lic. 01893341





## PROPERTY SUMMARY

This first floor office space features a functional layout, plenty of parking, and close proximity to the freeway. Located near the bluffs of Carpinteria, central to some of the area's high-tech and industrial companies.

**Suite:** B  
**Size:** 2,143 SF  
**Rate:** \$2.15 MGR  
**Available:** 10/1/23  
**Term:** 5+ years  
**Furniture:** Potentially available

**Floor:** First  
**HVAC:** Yes  
**Restrooms:** Men's and women's  
**Parking:** 8+ spaces  
**Utilities:** Separately metered  
**Zoning:** M-RP



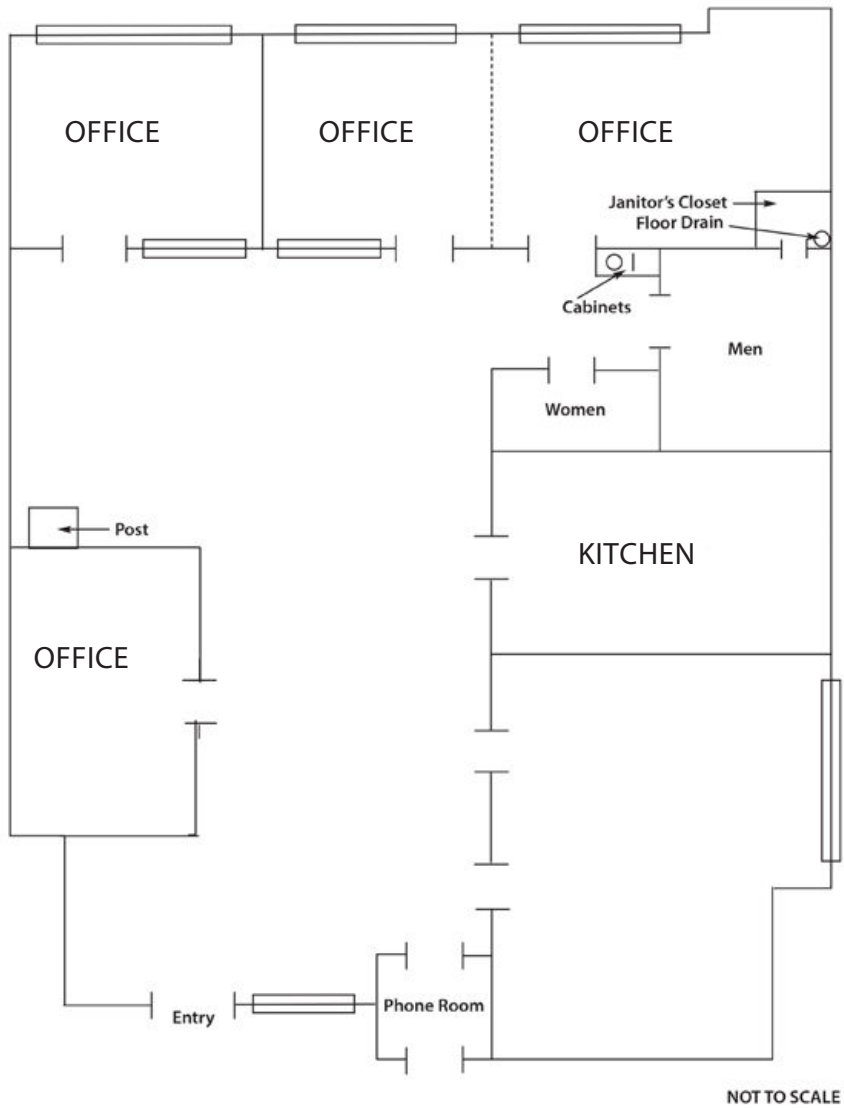
*Experience. Integrity. Trust.*  
*Since 1993*

**Kristopher Roth**  
**805.898.4361**  
[kris@hayescommercial.com](mailto:kris@hayescommercial.com)  
lic. 01482732

**Caitlin Hensel**  
**805.898.4374**  
[caitlin@hayescommercial.com](mailto:caitlin@hayescommercial.com)  
lic. 01893341







*Experience. Integrity. Trust.*  
*Since 1993*

**Kristopher Roth**  
805.898.4361  
[kris@hayescommercial.com](mailto:kris@hayescommercial.com)  
lic. 01482732

**Caitlin Hensel**  
805.898.4374  
[caitlin@hayescommercial.com](mailto:caitlin@hayescommercial.com)  
lic. 01893341

 **Hayes**  
COMMERCIAL GROUP



## AREA OVERVIEW

**Linden Ave**  
(Downtown Carpinteria)

Carpinteria Nature Preserve

Viola Fields

S&S Seeds  
Planned Member Services

**PROCORE**

Continental Auto  
Rincon Engineering

Permanent open space

Montecito	10 mi
Santa Barbara	13 mi
Goleta	22 mi

US  
101

**Linked in**

**SITE**

Rincon Surf	2 mi
Ventura	15 mi
Oxnard	25 mi
Santa Clarita	66 mi
Los Angeles	83 mi

## The Bluffs

About five minutes from downtown Carpinteria lies a stretch of beautiful coastal bluffs hugging the shore. Located just across US 101 is a collection of office/R&D/industrial buildings occupied by strong tenants like Procore and LinkedIn.



With easy US 101 access, temperate climate, and proximity to the beach and downtown, this coastal enclave is in high demand.

The subject property is situated in this park, and a new tenant will inherit the many amenities of the area.

GigaVac  
DacInt'l  
Janus et Cie  
Dako  
Brown & Brown  
Helix  
Teecino  
Griplock  
Biosphere  
Channel Island Surboards  
Dako/Agilent  
Nusil  
Nusil  
Nusil

Experience. Integrity. Trust.  
Since 1993

**Kristopher Roth**  
805.898.4361  
[kris@hayescommercial.com](mailto:kris@hayescommercial.com)  
lic. 01482732

**Caitlin Hensel**  
805.898.4374  
[caitlin@hayescommercial.com](mailto:caitlin@hayescommercial.com)  
lic. 01893341

