

87 Santa Felicia Ave
GOLETA, CA

EQUIPMENT AVAILABLE
(SEE PAGE 4 FOR PARTIAL LIST)



For Lease | Industrial Building with Turnkey Woodshop | **4,500 SF**

Experience. Integrity. Trust.
Since 1993

Liam Murphy, CCIM
805.898.4385
liam@hayescommercial.com
lic. 01439777

Toni Floyd
805.898.4369
toni@hayescommercial.com
lic. 2038568





PROPERTY SUMMARY

Industrial building for lease with potential to include a variety of woodworking equipment for a turnkey experience. Property features two roll-up doors, multiple skylights, shower, kitchenette, restroom, and large yard area with storage containers. Among the professional-grade equipment available: jointer, rip saw, planer, sliding bed table saw, wide belt sander, and forklift. Conveniently located near a host of amenities including Camino Real and Storke shopping centers.

Note: Owner is interested in subleasing back a portion of the space (back assembly room.)

Size	4,500 SF, plus covered storage and ample yard space
Rate	\$2.50 MGR
Term	3-5 years
Availability	30 days notice
Equipment	Available for additional charge
Parking	Yard space on-site and plentiful street parking
Kitchenette	Yes
Restrooms	Yes, with shower
To Show	Call listing agent

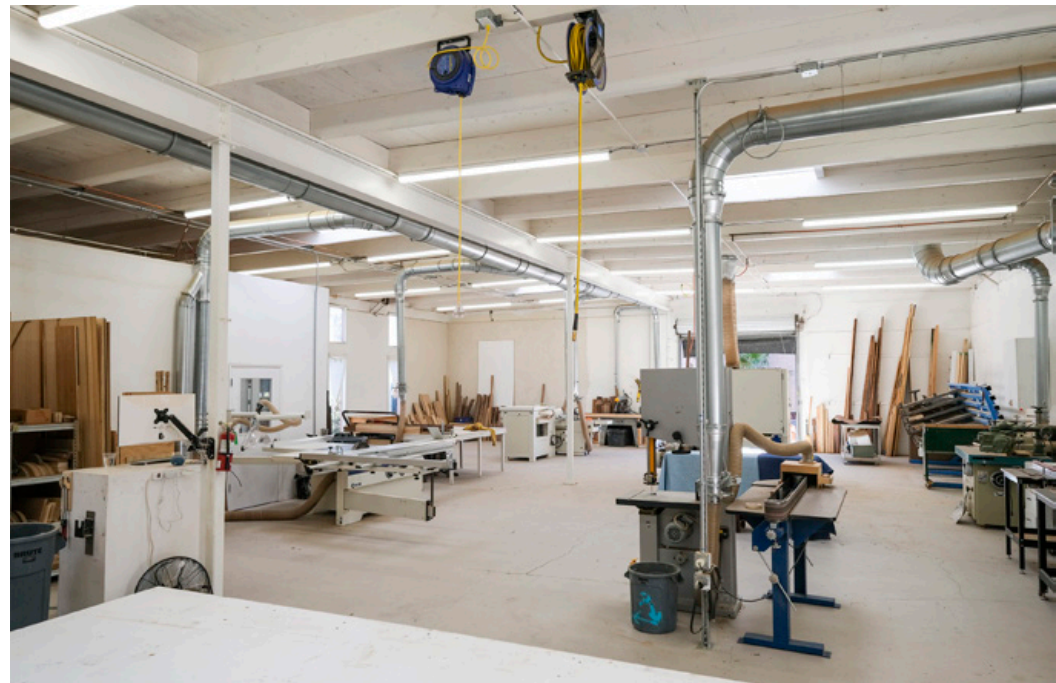
*Experience. Integrity. Trust.
Since 1993*

Liam Murphy, CCIM
805.898.4385
liam@hayescommercial.com
lic. 01439777

Toni Floyd
805.898.4369
toni@hayescommercial.com
lic. 2038568



HayesCommercial.com | Santa Barbara, CA



Experience. Integrity. Trust.
Since 1993

Liam Murphy, CCIM
805.898.4385
liam@hayescommercial.com
lic. 01439777

Toni Floyd
805.898.4369
toni@hayescommercial.com
lic. 2038568

 **Hayes**
COMMERCIAL GROUP

HayesCommercial.com | Santa Barbara, CA



Equipment includes:

- Radial Arm Saw
- Jointer
- Rip Saw
- Forklift
- Sliding Bed Table Saw
- Wide Belt Sander
- Band Saw
- Lathe
- Edge Sander
- Router Tables
- CNC Router
- Drill Presses



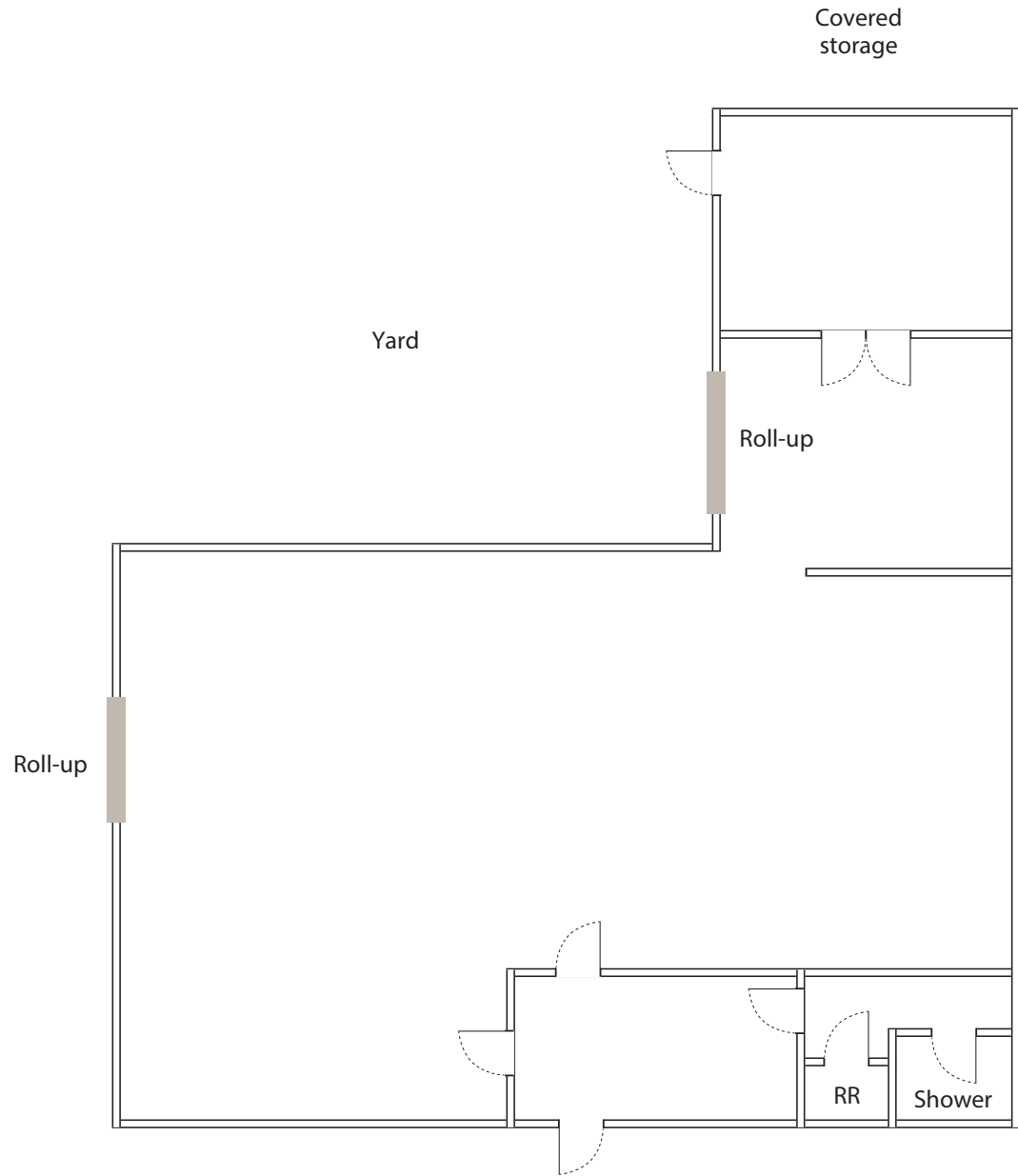
Experience. Integrity. Trust.
Since 1993

Liam Murphy, CCIM
805.898.4385
liam@hayescommercial.com
lic. 01439777

Toni Floyd
805.898.4369
toni@hayescommercial.com
lic. 2038568

 **Hayes**
COMMERCIAL GROUP

FLOOR PLAN



Experience. Integrity. Trust.
Since 1993

Liam Murphy, CCIM
805.898.4385
liam@hayescommercial.com
lic. 01439777

Toni Floyd
805.898.4369
toni@hayescommercial.com
lic. 2038568



AREA OVERVIEW



Experience. Integrity. Trust.
Since 1993

Liam Murphy, CCIM
805.898.4385
liam@hayescommercial.com
lic. 01439777

Toni Floyd
805.898.4369
toni@hayescommercial.com
lic. 2038568

