

271 N Fairview Ave
SUITE 104 | GOLETA, CA



For Sublease | Office/Medical Space in **Fairview Shopping Center** | 2,062 SF

Experience. Integrity. Trust.
Since 1993

Kristopher Roth
805.898.4361
kris@hayescommercial.com
lic. 01482732

Caitlin Hensel
805.898.4374
caitlin@hayescommercial.com
lic. 01893341



PROPERTY SUMMARY

Prominent end-cap office or medical space available in a well-positioned building in the Fairview Shopping Center. Abundant on-site parking, excellent signage, and great natural light. Building tenants include The MedCenter and Dr. Calvin Kim DDS. The center has a great mix of co-tenants including Starbucks, Sprouts, Rite-Aid, Santa Barbara Chicken Ranch, Wells Fargo, Miner's Hardware, and Santa Barbara Bank and Trust.

Size: 2,062 SF
Rate: \$2.20 NNN (.63)
Available: CLA
Term: Through 8/31/26
HVAC: Throughout
Parking: 4/1,000 SF
To Show: Call listing agent

Nearby Tenants: Starbucks; Sprouts; Union Bank; Wells Fargo; Michaels; Miner's Hardware; Metropolitan Fairview Theater



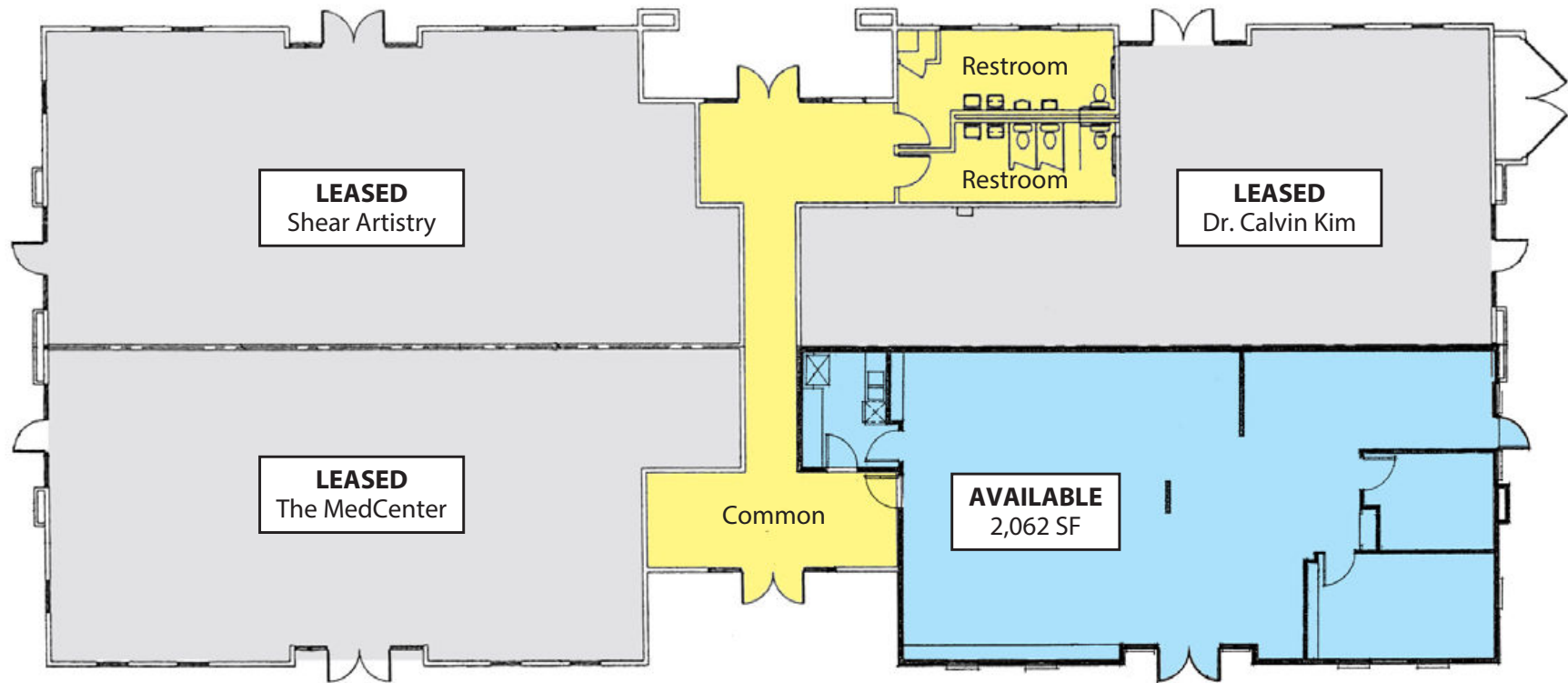
Experience. Integrity. Trust.
Since 1993

Kristopher Roth
805.898.4361
kris@hayescommercial.com
lic. 01482732

Caitlin Hensel
805.898.4374
caitlin@hayescommercial.com
lic. 01893341

 **Hayes**
COMMERCIAL GROUP

FLOOR PLAN



Experience. Integrity. Trust.
Since 1993

Kristopher Roth
805.898.4361
kris@hayescommercial.com
lic. 01482732

Caitlin Hensel
805.898.4374
caitlin@hayescommercial.com
lic. 01893341

