

FOR SUBLEASE

5464 Carpinteria Ave, Carpinteria
Office Space: 5,539 SF; 8,140 SF & 10,359 SF



 **Hayes**
COMMERCIAL GROUP

Steve Hayes
805-898-4370
steve@hayescommercial.com
lic. 00827640

Francois DeJohn
805-898-4365
fran@hayescommercial.com
lic. 01144570

FOR SUBLEASE

5464 Carpinteria Ave, Carpinteria
Office Space: 5,539 SF; 8,140 SF & 10,359 SF



Space:	<u>Suite A</u> 5,539 SF	<u>Suite J</u> 10,359 SF	<u>Suite D,F,H</u> 8,140 SF
Lease Rate:	\$1.05 NNN	\$1.15 NNN	\$0.95 NNN
NNN:	\$0.63		
Available:	Now		
Parking:	3.5/1,000		
Term:	Master lease expires 2/28/13		
Zoning:	CPD		
Restrooms:	Common on first, private on second.		
Furniture:	Negotiable		
Showings:	CLA		
Comments:	Suites A and J have been extensively remodeled by Microsoft. Suites D, F, and H have not been updated. All suites can be leased together or separately. The space provides for good natural light and is located in one of Carpinteria's nicest office buildings. Very convenient location to the freeway and downtown Carpinteria.		

The information contained herein has been obtained from the owner of the property or from other sources deemed reliable. We have no reason to doubt its accuracy, but we do not guarantee it.



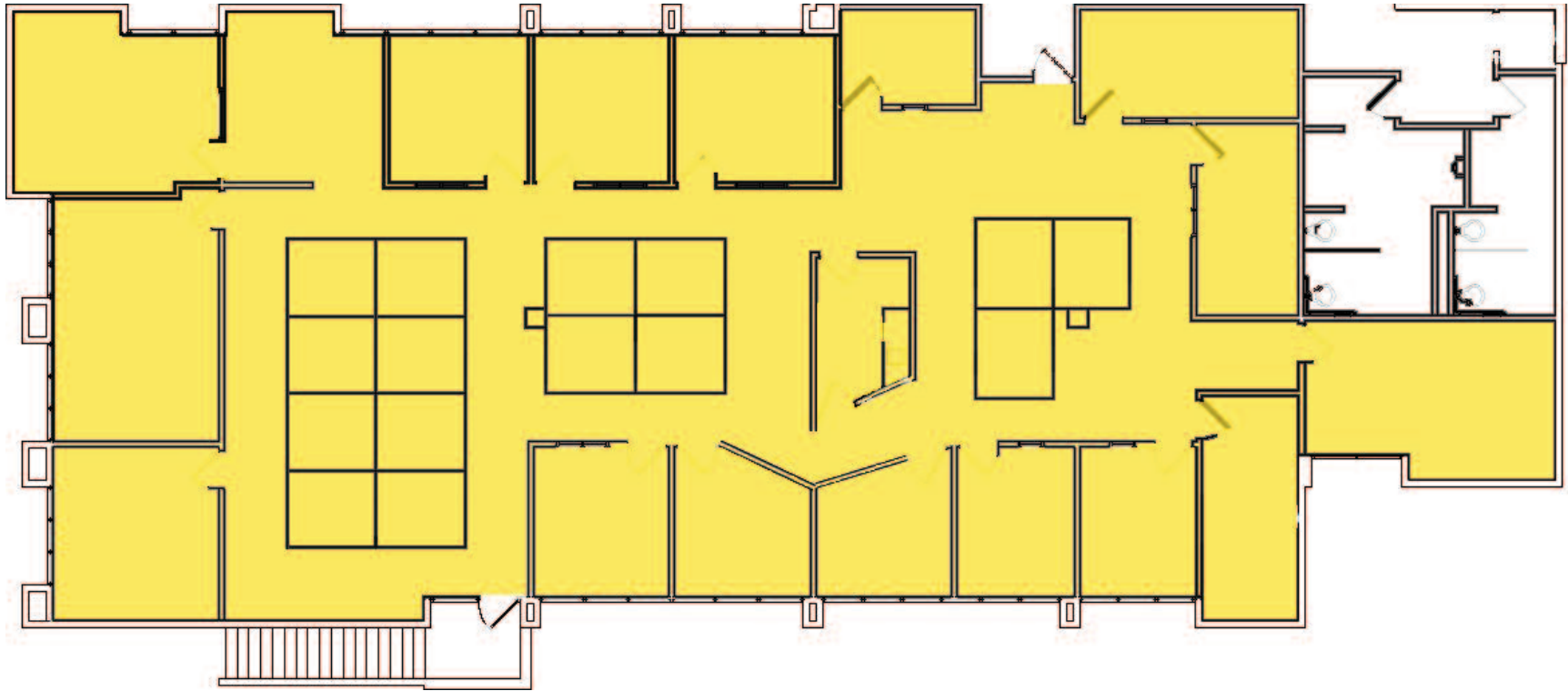
Steve Hayes
805-898-4370
steve@hayescommercial.com
lic. 00827640

Francois DeJohn
805-898-4365
fran@hayescommercial.com
lic. 01144570

FOR SUBLEASE

5464 Carpinteria Ave, Carpinteria
Office Space: 5,539 SF; 8,140 SF & 10,359 SF

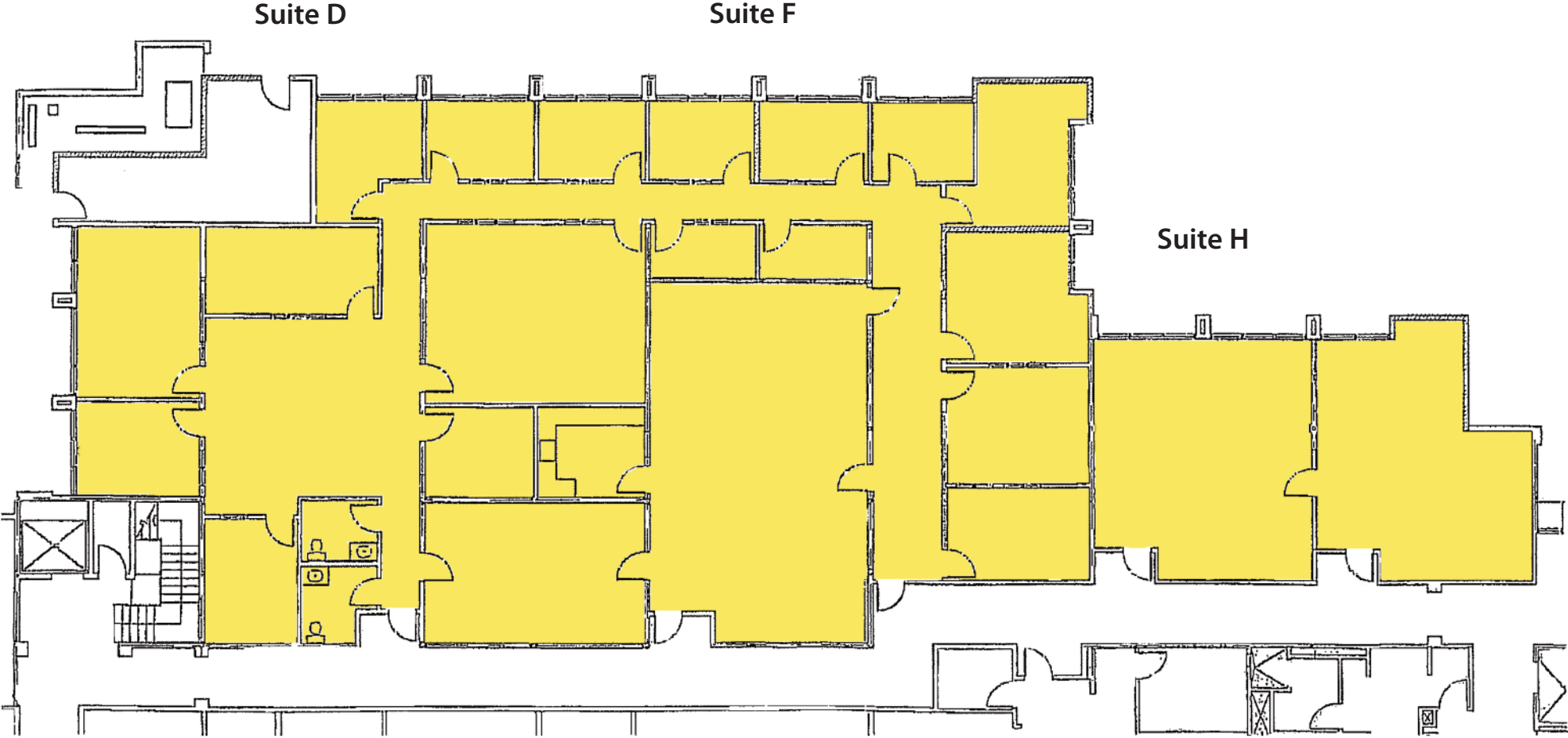
Suite A: 5,539 SF



FOR SUBLEASE

5464 Carpinteria Ave, Carpinteria
Office Space: 5,539 SF; 8,140 SF & 10,359 SF

Total: 8,140 SF



Steve Hayes
805-898-4370
steve@hayescommercial.com
lic. 00827640

Francois DeJohn
805-898-4365
fran@hayescommercial.com
lic. 01144570

FOR SUBLEASE

5464 Carpinteria Ave, Carpinteria
Office Space: 5,539 SF; 8,140 SF & 10,359 SF

Suite J: 10,359 SF

