

FOR SUBLEASE

460 E. Esplanade Dr, Oxnard
Topa Financial Plaza
Ground Floor Office Space: 1,624 SF

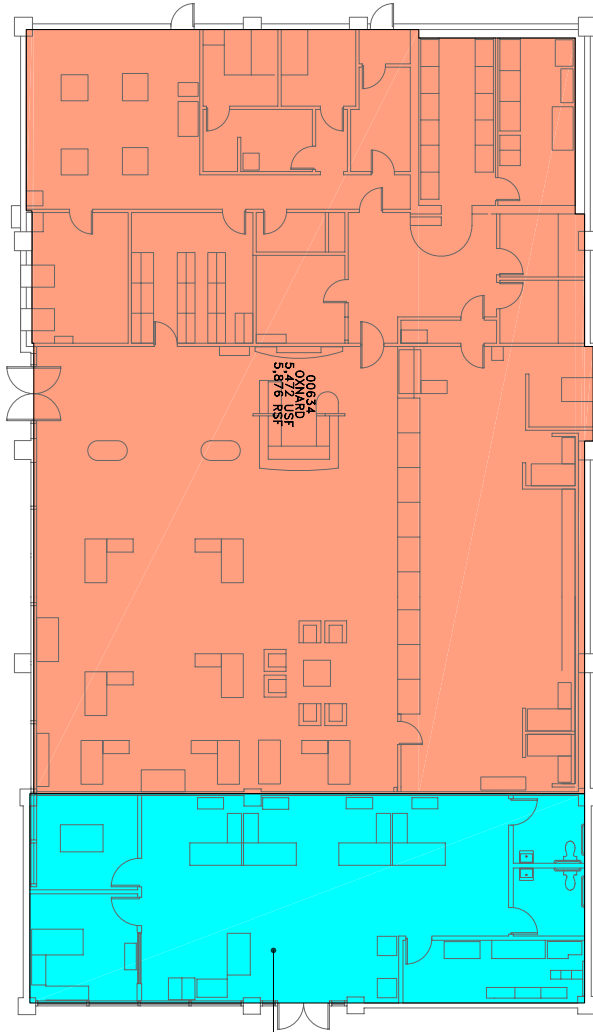


 **Hayes**
COMMERCIAL GROUP

Pamela A. Scott
805-898-4392
pam@hayescommercial.com
lic. 00705034

FOR SUBLEASE

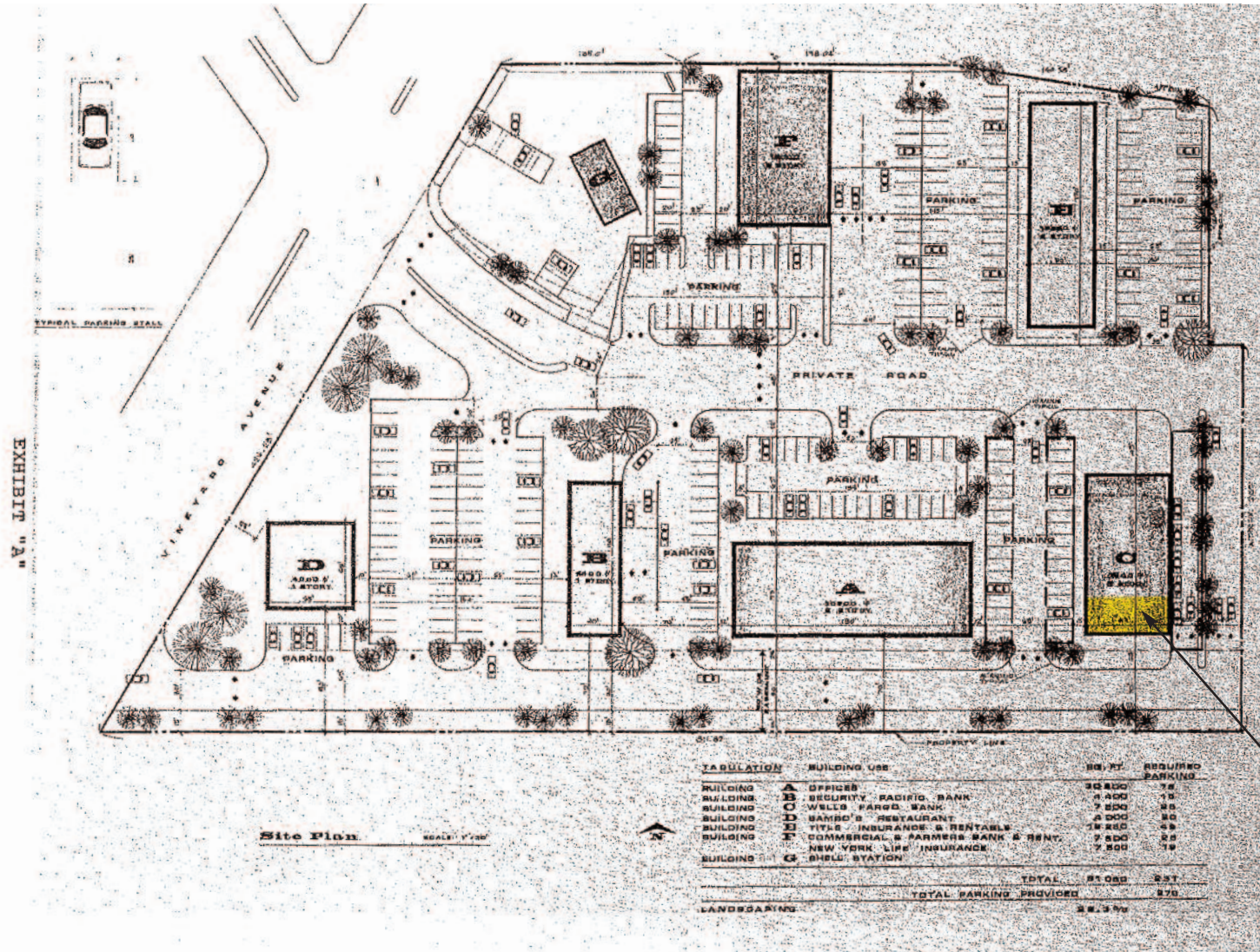
460 E. Esplanade Dr, Oxnard
Topa Financial Plaza
Ground Floor Office Space: 1,624 SF



Square Feet:	1,624 SF
Rental Rate:	\$1.25 FSG excluding janitorial
Utilities:	Included in rate
Available:	Now
Term:	Until July 31, 2017
Parking:	In common
HVAC:	Yes
Restrooms:	Two
CSO:	3%
Comments:	This sublease space is located in a portion of the freestanding Wells Fargo Bank building in the Topa Financial Plaza office complex in Oxnard. It is located in one of the most visible office/retail buildings in the complex. This space has excellent parking and is on the ground floor. A nearby restaurant, retail and the Radisson Hotel enhance the site, as well as numerous office users and retail generators in the area. Onsite security 24 hours a day. Space is well laid-out with two private offices, an open bay and two restrooms.

FOR SUBLEASE

460 E. Esplanade Dr, Oxnard
 Topa Financial Plaza
 Ground Floor Office Space: 1,624 SF



SUBJECT

FOR SUBLEASE

460 E. Esplanade Dr, Oxnard
Topa Financial Plaza
Ground Floor Office Space: 1,624 SF

