

FOR LEASE

30 S La Patera Ln, Goleta
Office/Industrial Space: 15,995 - 65,717 SF
\$0.70 NNN (.30)



Suite 5 - 33,005 SF



Suite 9 - 16,717 SF

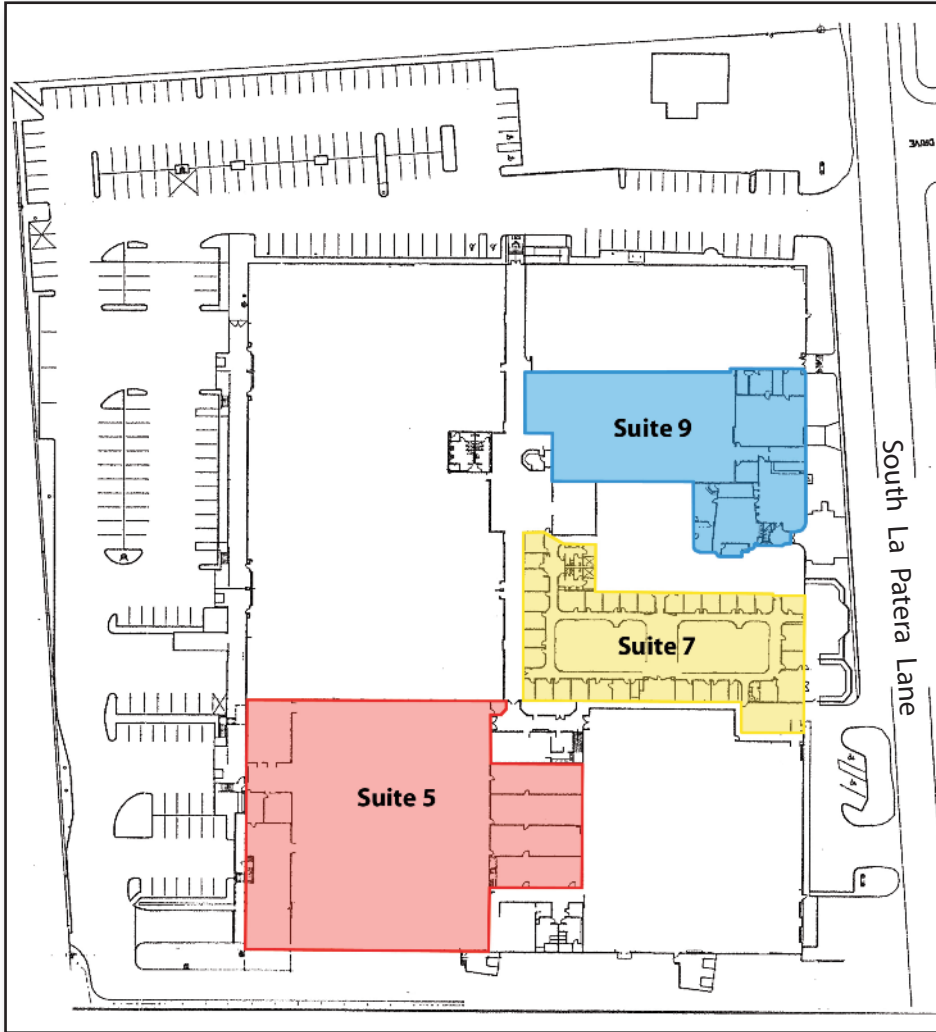


Suite 7 - 15,995 SF



FOR LEASE

30 S La Patera Ln, Goleta
Office/Industrial Space: 15,995 - 65,717 SF
\$0.70 NNN (.30)



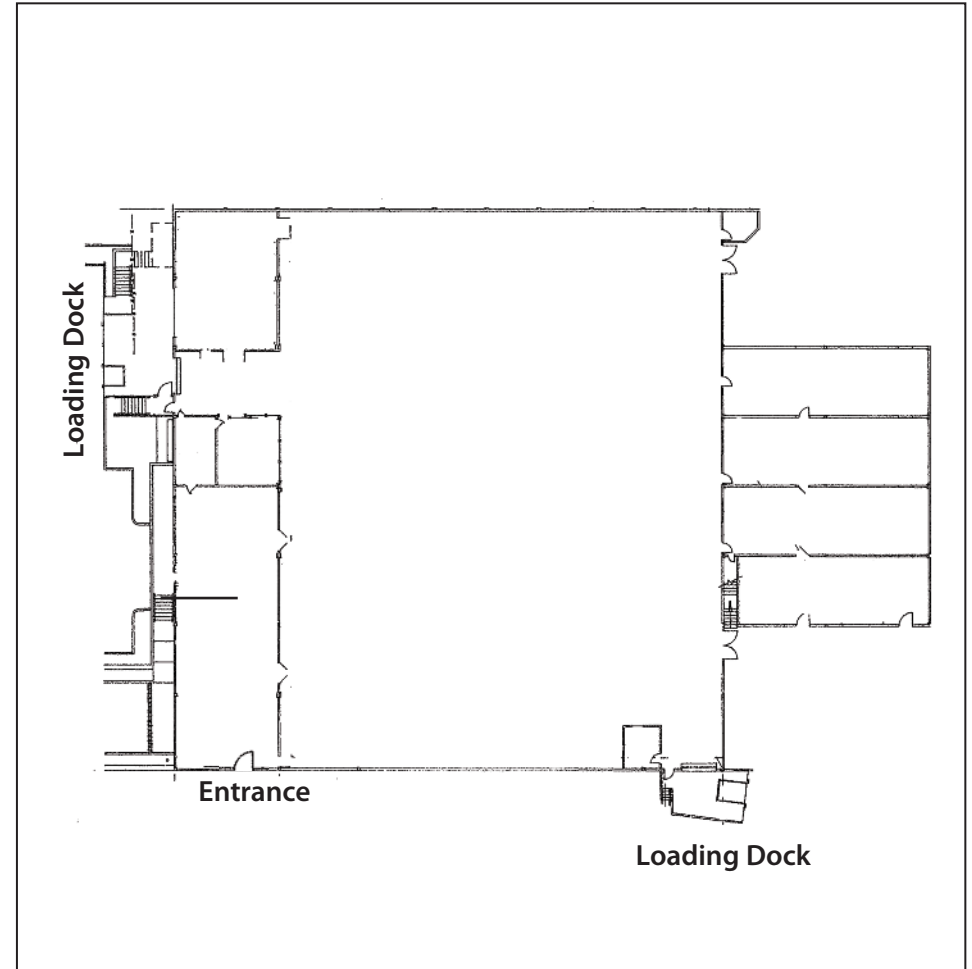
	<u>Suite</u>	<u>Size</u>	<u>Parking</u>
Available:	Suite 5:	33,005 SF	1.5/1,000 SF
	Suite 7:	15,995 SF	2.8/1,000 SF
	Suite 9:	16,717 SF	2.8/1,000 SF
	Total:	65,717 SF	
Rate:	\$0.70 NNN (.30)		
Term:	3 - 10 years		
Ceiling Height:	30' to apex; 16' to crossbeams in Suite 5		
Power:	1,000 amps in Suite 5		
HVAC:	Yes, in offices. Heat in warehouse/industrial space		
Restrooms:	Common, private showers in Suite 7		
Loading:	3 dock-high with load levelers		
Comments:	Clean office / R&D / warehouse building in the heart of Goleta within close proximity to the airport, UCSB and Camino Real Shopping Center. Suite 5 offers first class warehouse / industrial spaces with 3 dock-high loading positions (with load levelers), ample power, great natural light, 30' ceiling heights and flexible office space. Suite 7 offers an efficient mix of open bullpen and private offices, lots of skylights throughout the space and multiple restrooms with showers. Suite 9 has a unique mix of professional offices and warehouse/manufacturing space. Suites can be leased separately or together.		

The information contained herein has been obtained from the owner of the property or from other sources deemed reliable. We have no reason to doubt its accuracy, but we do not guarantee it.

FOR LEASE

30 S La Patera Ln, Goleta
Office/Industrial Space: 15,995 - 65,717 SF
\$0.70 NNN (.30)

Suite 5: 33,005 SF



The information contained herein has been obtained from the owner of the property or from other sources deemed reliable. We have no reason to doubt its accuracy, but we do not guarantee it.



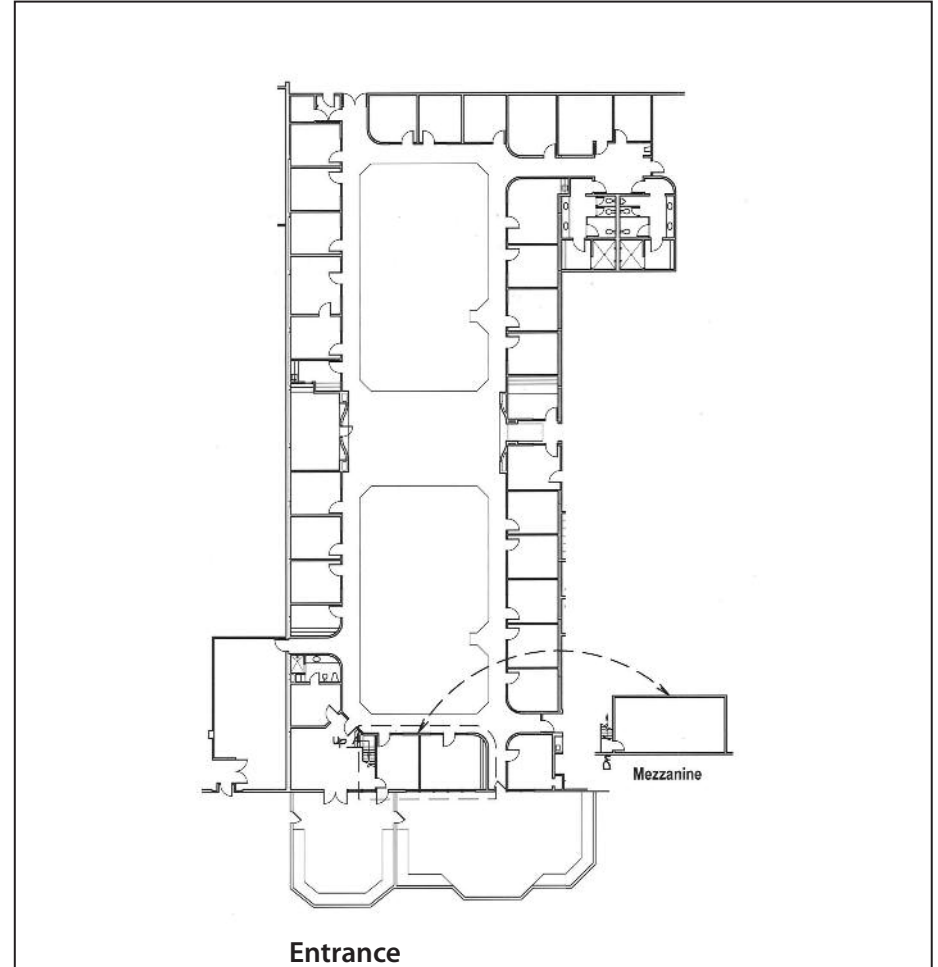
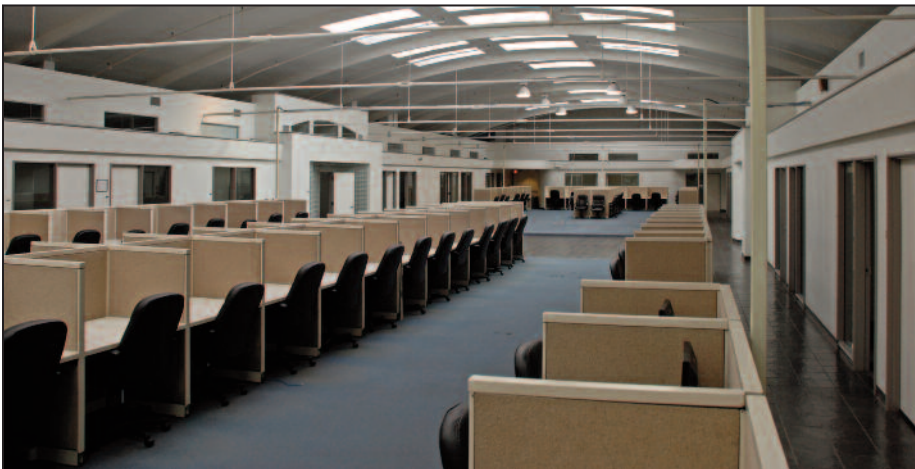
Greg Bartholomew
805-898-4395
greg@hayescommercial.com
lic. 01131126

Kristopher Roth
805-898-4361
kris@hayescommercial.com
lic. 01482732

FOR LEASE

30 S La Patera Ln, Goleta
Office/Industrial Space: 15,995 - 65,717 SF
\$0.70 NNN (.30)

Suite 7: 15,995 SF

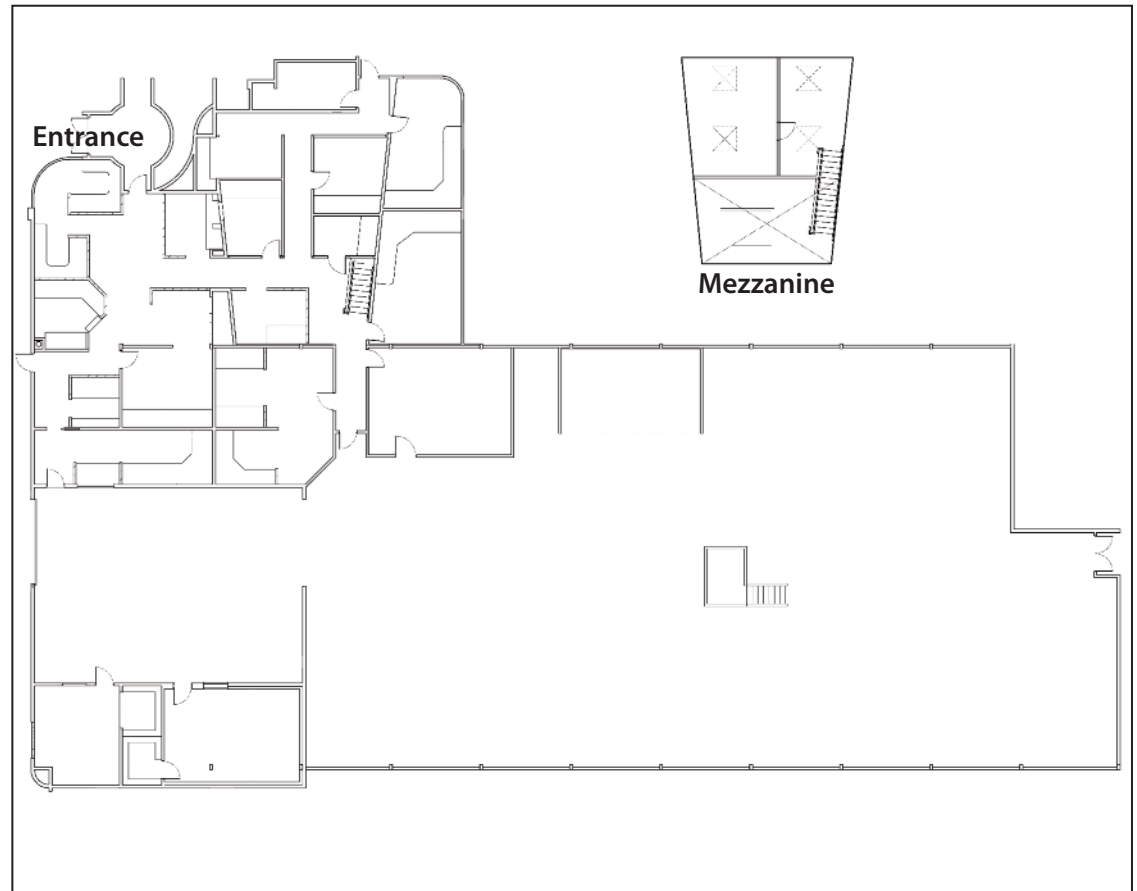


The information contained herein has been obtained from the owner of the property or from other sources deemed reliable. We have no reason to doubt its accuracy, but we do not guarantee it.

FOR LEASE

30 S La Patera Ln, Goleta
Office/Industrial Space: 15,995 - 65,717 SF
\$0.70 NNN (.30)

Suite 9: 16,717 SF



The information contained herein has been obtained from the owner of the property or from other sources deemed reliable. We have no reason to doubt its accuracy, but we do not guarantee it.